

# The Archaeology Data Service (ADS) and the OASIS Project



Catherine Hardman  
Deputy Director (Collections)  
catherine.hardman@york.ac.uk

# ADS Mission Statement: What we do

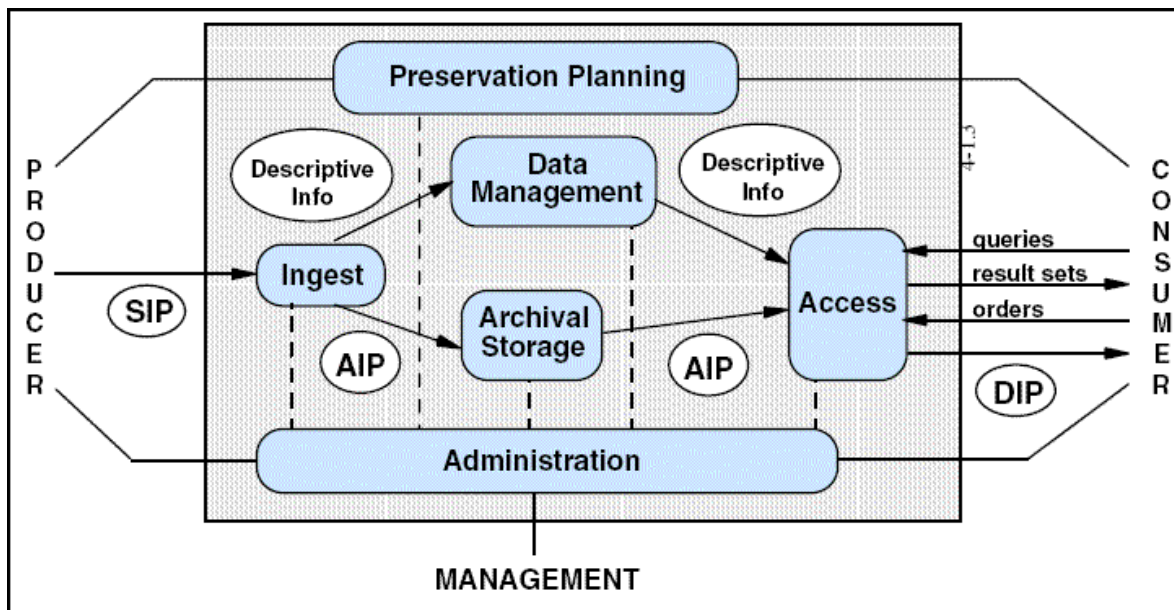
## Our remit:

“To support research, learning and teaching with high quality and dependable digital resources.”

## In practice this means three key things:

- That ADS collect and preserve datasets
- That we allow full, easy and free access to these
- And that we additionally provide guidance and support to data creators

# Archival Standards: How we do it



We follow the Open Archival Information System (OAIS) reference model

In March 2011 we were very pleased to obtain the Data Seal of Approval:

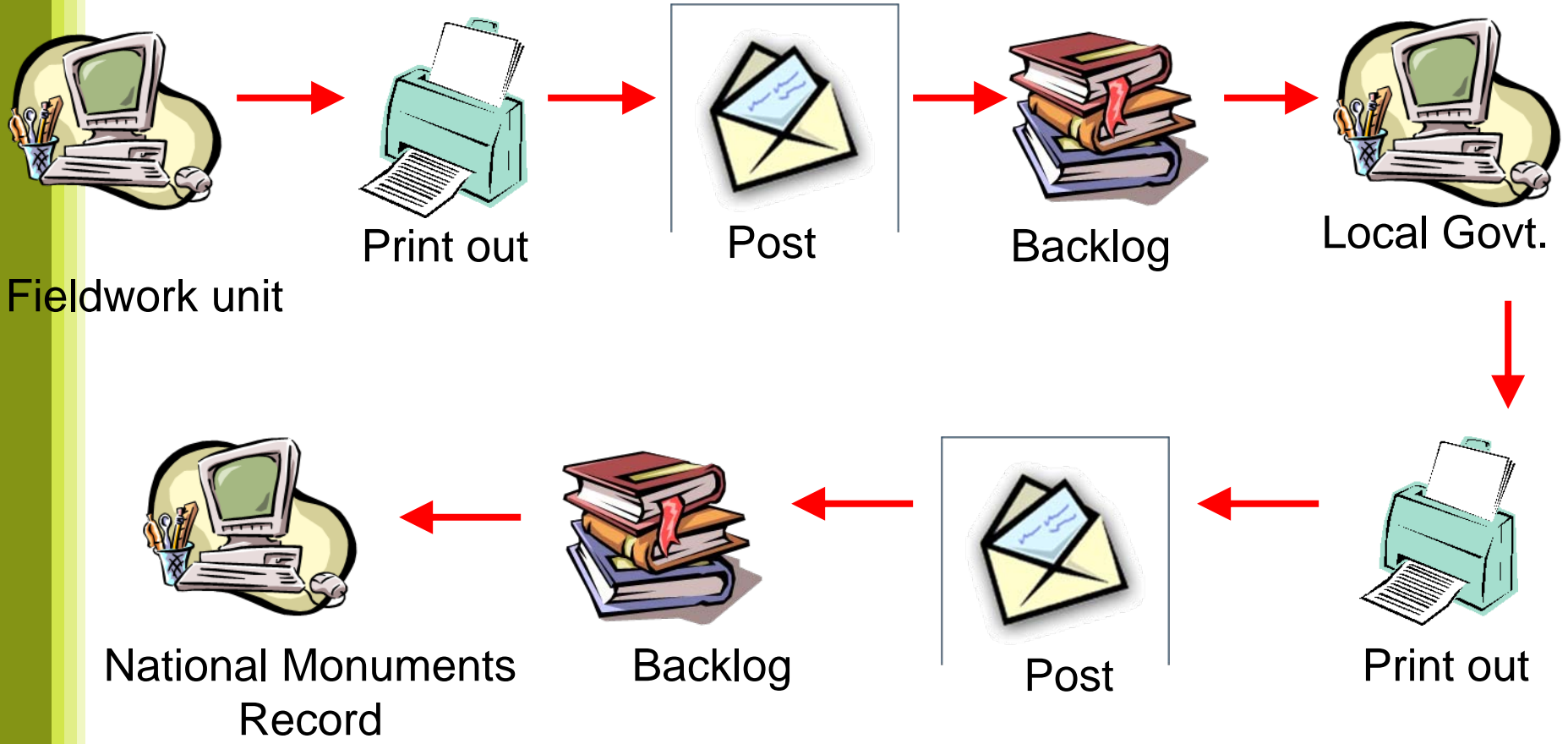
[http://assessment.datasealofapproval.org/assessment\\_36/seal/html/](http://assessment.datasealofapproval.org/assessment_36/seal/html/)



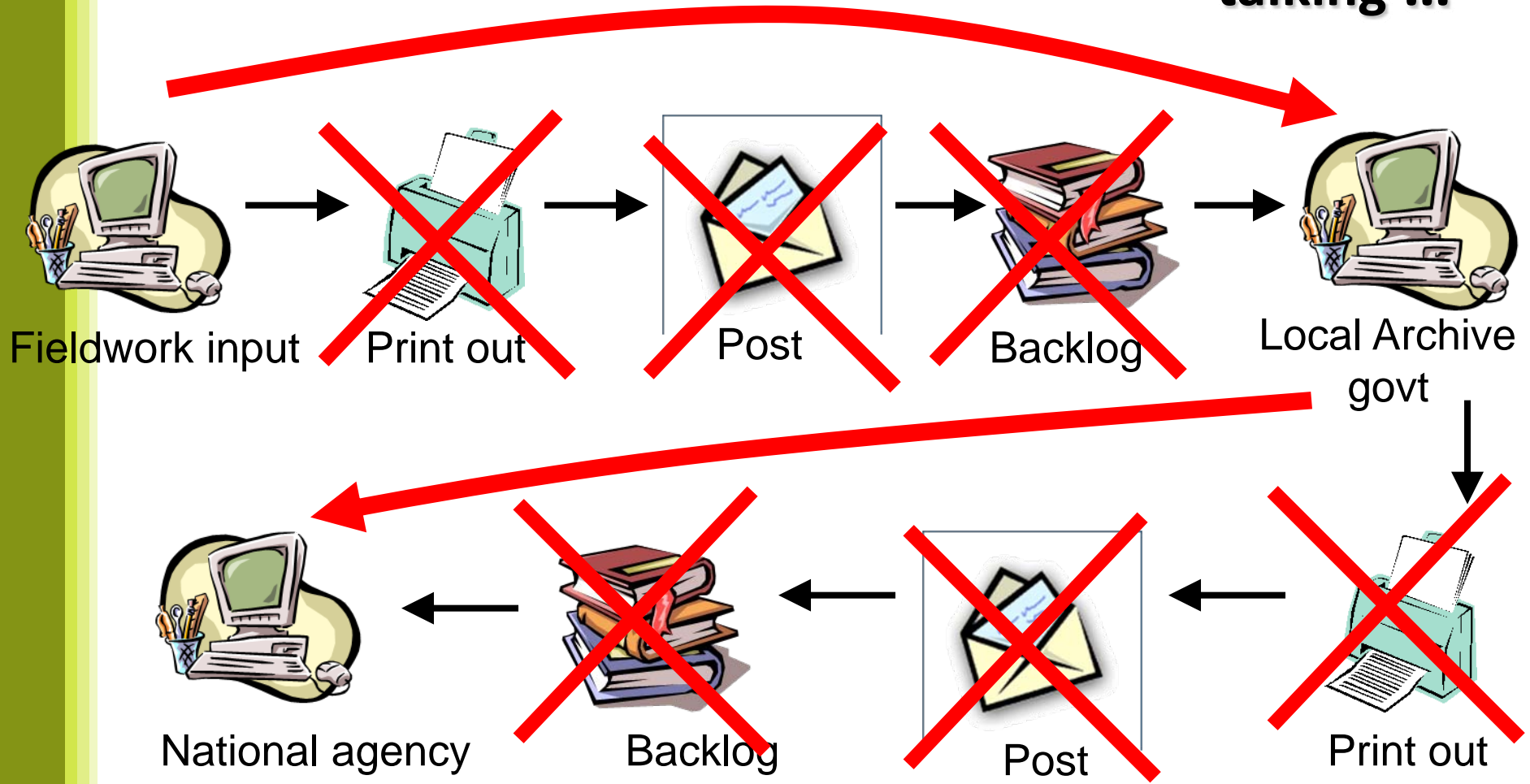
# Grey Lit: Current situation

- 10,000 – 40,000 reports
- Research Gap
- Public excluded
- Backlogs of data
- Quality assurance?

# Grey Lit: Current situation



# In an ideal world the machines should do the talking ...



# OASIS: Online Access to the Index of archaeological investigationS

<http://oasis.ac.uk>

## OASIS DATA COLLECTION FORM

List of Projects

### Main

This is the main page of the OASIS form, the form is split into sections as listed below.

You can fill as much or as little of each section in at any one time. Once you have filled in a section completely, please tick the **completed** box at the bottom of that section. The form will then check to see that all the mandatory fields (marked with a \*) have been completed. If this is the case it will return to this page, if not it will ask you complete the missing fields.

There are some fields that **must** be filled in: the project name, the location and your name and email address.

**Please note:** the form entries are only saved when the **Save record** has been pressed. If you leave the form inactive for over 30 minutes any entries will be lost, this is to retain the security of your username and password.

OASIS ID: catherin1-13982	
<a href="#">? Project details</a>	Add or edit entries
Status	Incomplete
<a href="#">? Project location</a>	Add or edit entries
Status	Incomplete
<a href="#">? Project creators</a>	Add or edit entries
Status	Incomplete
<a href="#">? Project archives</a>	Add or edit entries
Status	Incomplete
<a href="#">? Project bibliography 1</a>	Choose a Publication type Add or edit entries <a href="#">+</a>
Status	Incomplete

Please enter your name and personal email address here so that any queries about this form can be directed to you:

Name	Email address
<input type="text"/>	<input type="text"/>

- On-line form
- Used by all fieldworkers
- Records event level data
- Data accessible by HERs & NMRs
- Upload of 'Grey Literature'
- Record acts as metadata for report

# Unpublished Fieldwork Reports (Grey Literature Library)

**Introduction**  
**Browse by contractor**  
**Search reports**



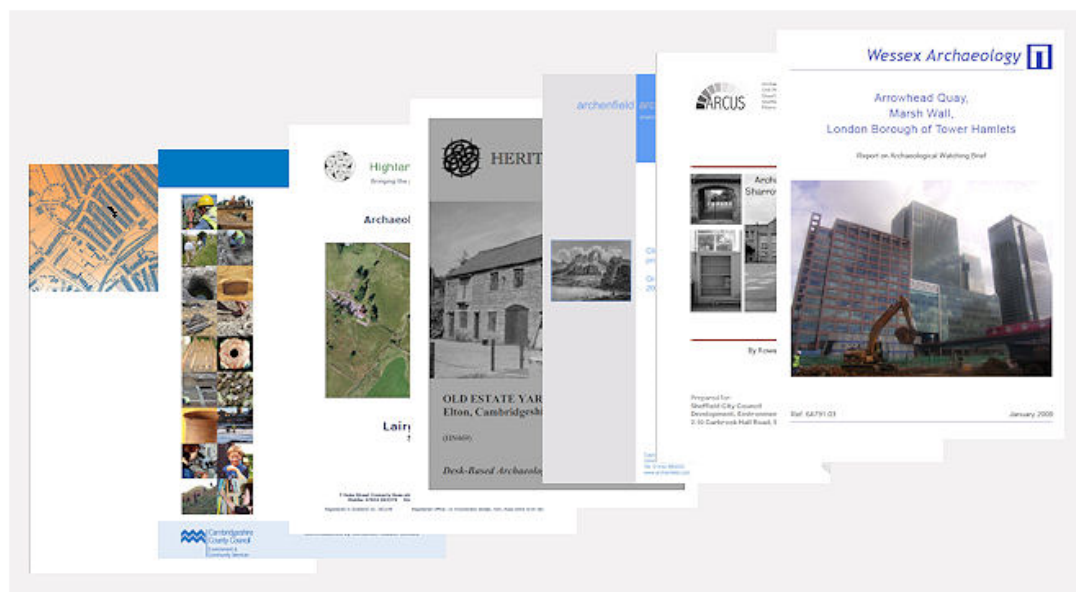
**Primary contact**  
 Archaeology Data Service  
 King's Manor  
 Exhibition Square  
 York  
 YO1 7EP  
 England  
 Tel: 01904 323954  
 Fax: 01904 323939

[Send e-mail enquiry](#)

## Introduction

The aim of this resource is to make available unpublished fieldwork reports in an easily retrievable fashion. There are **currently 8936 reports available** and this number is increasing steadily through the OASIS project in England and Scotland.

Through this resource it is possible to list the reports by contractor, using the [browse by contractor](#) option and also to do a more advanced search filtering these reports by period, monument/artefact type and location using the [search](#) option. These unpublished reports cover archaeological interventions such as: watching briefs, excavation reports and building surveys. Desk-based assessments and specialist analysis are also included.



We have recently topped the 10,000 report mark!



## Unpublished Fieldwork Reports (Grey Literature Library)

### Introduction

[Browse by contractor](#)

[Search reports](#)



### Primary contact

Archaeology Data Service  
 King's Manor  
 Exhibition Square  
 York  
 YO1 7EP  
 England  
 Tel: 01904 323954  
 Fax: 01904 323939

[Send e-mail enquiry](#)

### Search Page

Enter your search terms, select the type of search and click on the search button. It is possible to build up quite specific queries but we would recommend that you start simple. You can add more boxes by using the **+** button. For more tips on searching see the text at the bottom of the page.

#### Book details

Enter title, author, producer, place of production or **publication** date and select the relevant box

Title  Author  Producer  Place of production  Date

#### Where

'Where' categories are Site name, Parish, District, County and Country - select the relevant box

Site name  Parish/Non parish area  District/Unitary Authority  County  Country

#### What

Please select an artefact or monument and enter **one** term (use the plus button to add another)

Monument  Find

#### When

Select a period from the list of MIDAS period terms

**Period**

#### Identifier

OASIS id or ADS Record ID

**Id number**

We reuse the OASIS metadata on which to perform the searches.

## Unpublished Fieldwork Reports (Grey Literature Library)

**Introduction**  
[Browse by contractor](#)  
[Search reports](#)



**Primary contact**  
 Archaeology Data Service  
 King's Manor  
 Exhibition Square  
 York  
 YO1 7EP  
 England  
 Tel: 01904 323954  
 Fax: 01904 323939

[Send e-mail enquiry](#)

### Results

Click on the title to view more details about the document and project or click on the file type link to download the report. Where multiple files exist for a report, you will need to go to the full details page in order to access the files.

Records 1 - 6 of 6

<a href="#">[Multiple files available]</a>	Adcock, J Gater, J (2005) 'Geophysical Survey: Arkwright's Mill, Manchester' Geophysical Surveys of Bradford (GSB Prospection)
<a href="#">[Multiple files available]</a>	Elks, D. (2005) 'Wigmore Farm' Stratascan Ltd
PDF (3MB)	Wright, N. (2007) 'Godmanchester to Hemingford Abbots Water Main Renewal, Cambridgeshire' CAM ARC
PDF (1MB)	Phillips, T. (2007) 'Roman Remains at 8 New Street, Godmanchester, Cambridgeshire' CAM ARC
PDF (995KB)	Howe, A. (2007) 'Archaeological Monitoring Land Between Park Lane and East Chadley Lane, Godmanchester, Cambridge' CAM ARC
PDF (6MB)	Pozorski, Z (2009) '5 Offord Road, Godmanchester, Huntingdon, Cambridgeshire: An archaeological evaluation' Archaeological Solutions Ltd

**Unpublished Fieldwork Reports (Grey Literature Library)**

Introduction  
Browse by contractor  
Search reports



Primary contact  
Archaeology Data Service  
King's Manor  
Exhibition Square  
York  
YO1 7EP  
England  
Tel: 01904 323954  
Fax: 01904 323939

[Send e-mail enquiry](#)

Details of Document

Bibliographic Reference and files

Phillips, T. (2007) 'Roman Remains at 8 New Street, Godmanchester, Cambridgeshire', report number 935. CAM ARC: Bar Hill, Cambridgeshire

Click on a button to open a file, or right click and use file --> save as from your browser menu to save the file to your computer. Alternatively, if the report is available online, click on the link to open the resource in a new window:

cambridg1-25249\_3.pdf PDF 1 Mb

<< display document details >>

Site details

Location	
Site name	8 New Street
Parish	GODMANCHESTER
District	HUNTINGDONSHIRE
County	CAMBRIDGESHIRE
Country	ENGLAND
Grid reference	TL 524 270 (point)

Monuments and Finds	
DITCH	ROMAN
PIT	ROMAN
SETTLEMENT/TOWN	ROMAN
BONE	ROMAN
COINS	ROMAN
COMPOSITE COPPER ALLOY ARTEFACT	UNCERTAIN
POTTERY	ROMAN

Other details

Description Spiral bound, 31 pages, 4 figures, 3 plates, 9 tables, 6 appendices.



CAM ARC Report Number 935

**Roman Remains at 8 New Street, Godmanchester, Cambridgeshire**

An Archaeological Evaluation

Tom Phillips  
March 2007

Click through the metadata 'landing page' and find the document.

# Challenges (1)

- Need for community buy-in
- Need for continuing support for the system
- Poor quality of some of the reports
- Reports not designed for research but as part of the planning process

## Challenges (2)

- Technical issues in the creation of the files means they are sometimes incomplete (images)
- Poor metadata affects the quality of searching (e.g. Highways agency reports)
- Metadata doesn't reflect scale (e.g. Roman Pottery may reveal 6 or 1,000 sherds)

# Opportunities (1)

- Access (from April '05 to Jan '11 over 500,000 downloads)
- Key archaeological reports archived
- Inclusions of DOIs
- Enhancing metadata by using Natural Language Processing

## Opportunities (2)

- Provides new research opportunities (Bradley and Fulford)
- Lead to investigation of more automated upload of other types of data (Wessex images project)
- On line access may lead to informal peer review and thereby an increase in quality

# Thank-you for listening!



Follow us on Twitter:

@ADS\_Update



Follow us on Facebook:

<http://www.facebook.com/archaeology.data.service>



E-mail: [catherine.hardman@york.ac.uk](mailto:catherine.hardman@york.ac.uk)

Website: <http://archaeologydataservice.ac.uk/>