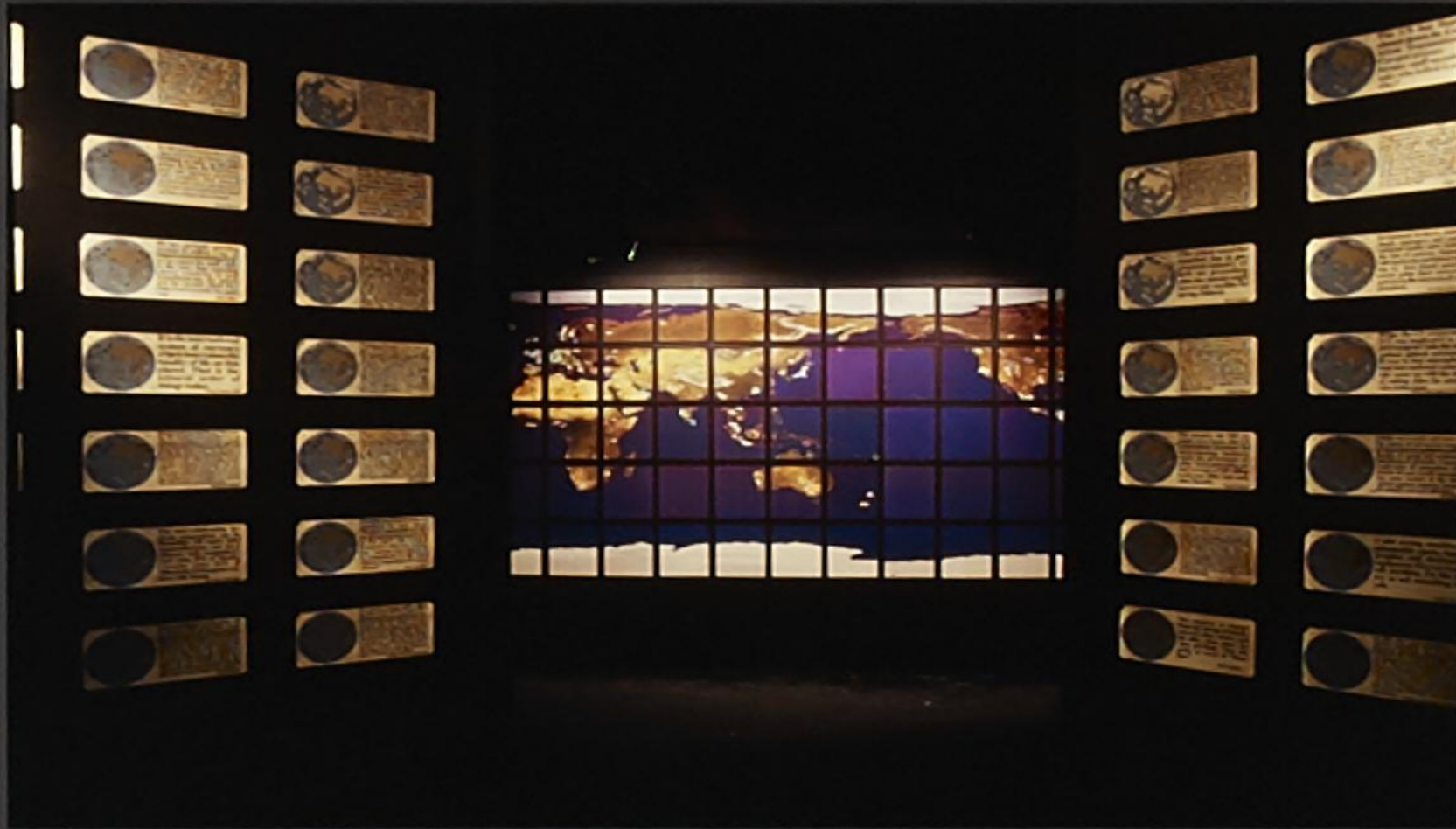


ual:



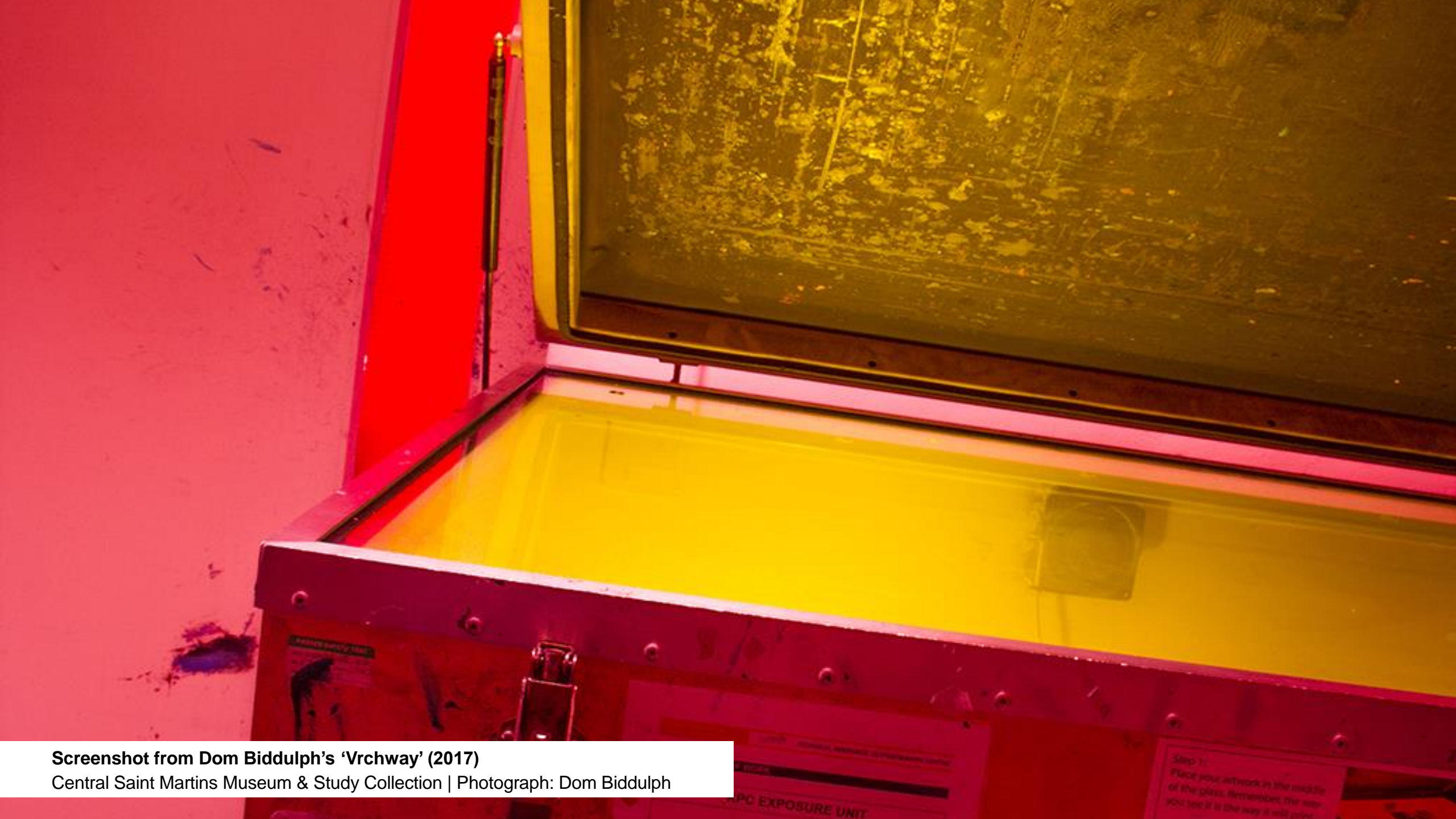
1994 BA Design degree show slide

Chelsea College of Art & Design College Archive | Photograph: Chelsea College of Art & Design

ual:

Challenging Collecting:
Inspiring a broader review of UAL
collections management practices

Elisabeth Thurlow | November 2021



Screenshot from Dom Biddulph's 'Vrchway' (2017)
Central Saint Martins Museum & Study Collection | Photograph: Dom Biddulph

University of the Arts London

Digital Collections

[Explore our collections](#) →

[View all objects](#) →

[View curated exhibition on Sustainability](#) →

Search



Sustainability curated collection – curated by Lucie Pardue and Jacqueline Winston-Silk

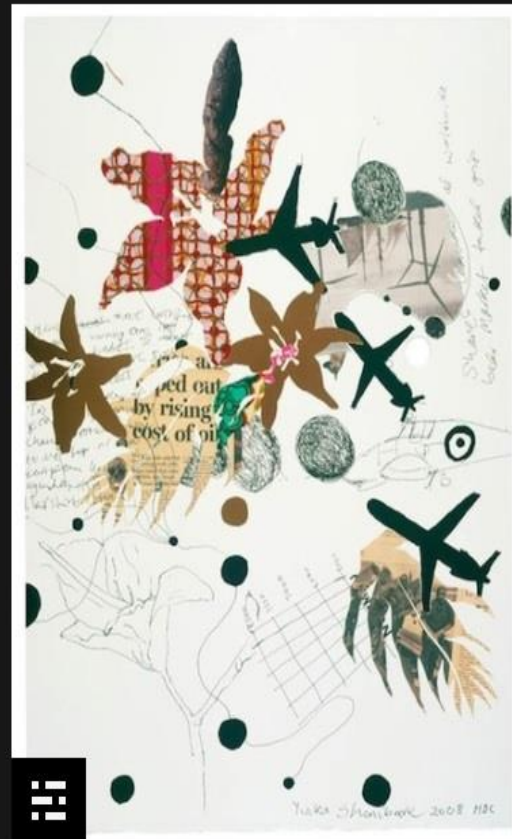
UAL | Photograph: Elisabeth Thurlow



Exposure 003 - Exposure 008



Fish trap



Climate Shit Drawing 1



The Plight of the Bumblebee



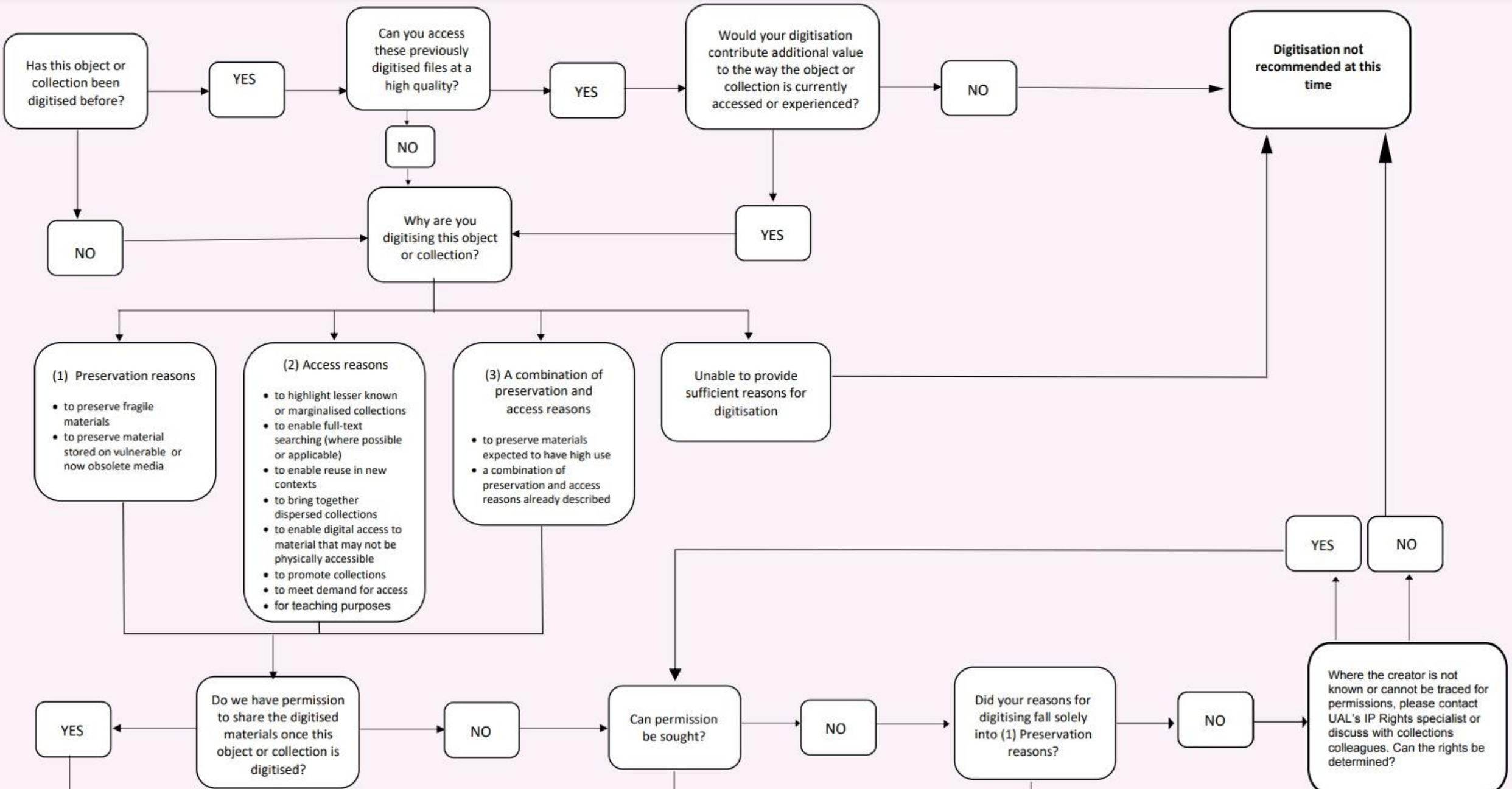
Seed Fabric: The Eternal Value of an Ephemeral Cloth

CONTENTS

MORE INFORMATION



Seed Fabric by Apurva Srihari (2019-2020)
UAL Art Collection | Photograph: Apurva Srihari

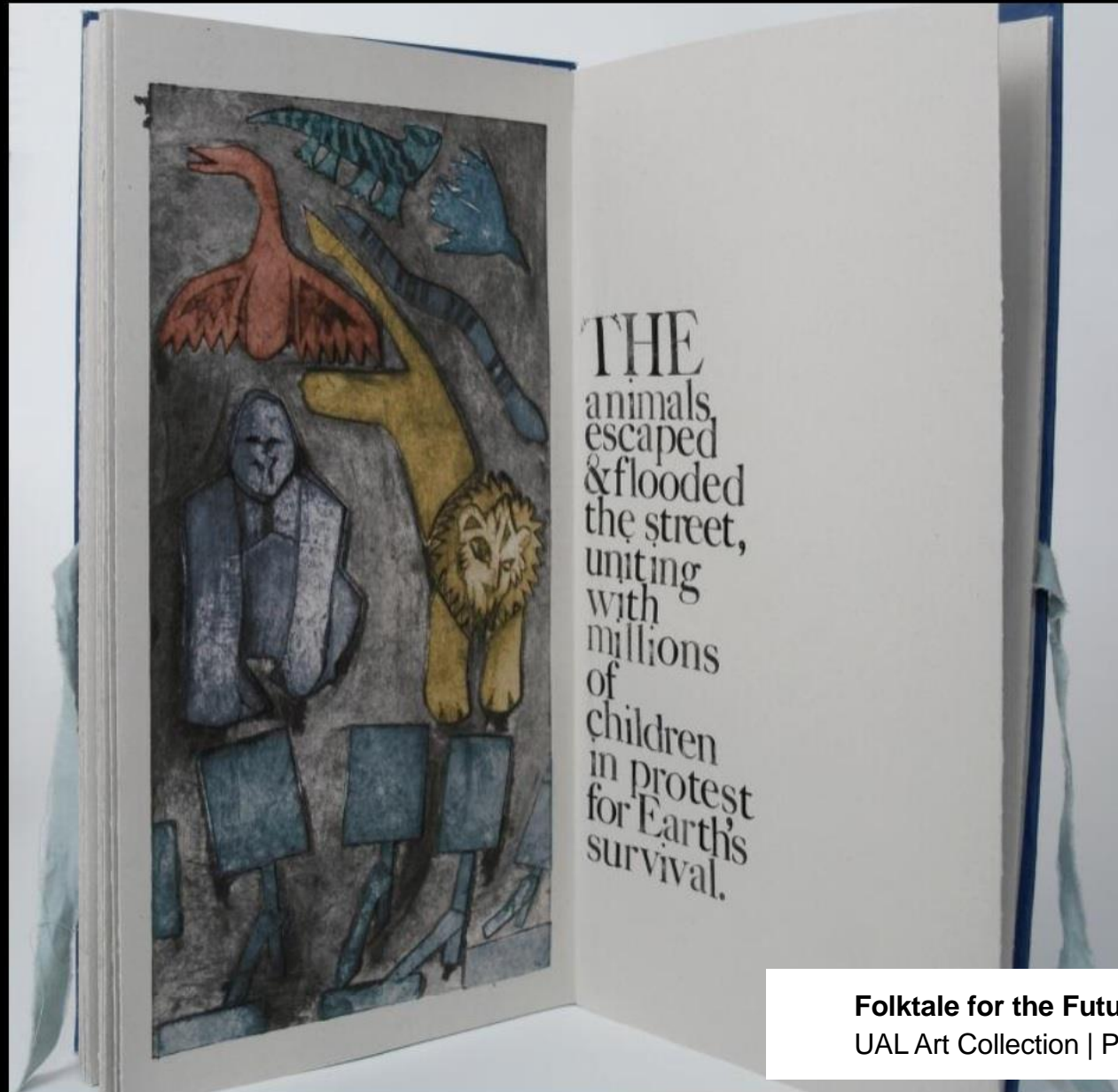


Do I Digitise? Workflow
UAL | Photograph: Elisabeth Thurlow

Folktale for the Future: Flood Story

CONTENTS

MORE INFORMATION



Folktale for the Future: Flood Story by Amelia D. H Tovey (2020)
UAL Art Collection | Photograph: Amelia D. H Tovey

ual:

Elisabeth Thurlow
Digital Preservation and Access Manager

e.b.thurlow@arts.ac.uk

digitalcollections.arts.ac.uk

 **@UAL_Archives**

 **ual_archives**