



NETWERK  
DIGITAAL  
ERFGOED

## A Cost Model for analysing and controlling the costs of long-term digital accessibility as a strategic decision making tool

*DPC – 29 May 2019*

**Herman Uffen MSc. (BMC / Dutch Digital Heritage Network)**

**Shannon Roest MSc. (BMC / Dutch Digital Heritage Network)**

## **1. *Introduction to the cost model***

- a. Purpose of the cost model*
- b. Structure, operation and potential*
- c. Link with other fields - preservation policy and shared services*
- d. Results*

## **2. *Questions and discussion***



## ***Purpose of the cost model***

1. Mapping the costs of management, preservation and access of digital heritage at the institutions involved
2. Analyse the costs (components) per activity for each institution
3. Comparing costs between institutions
4. Explaining differences in costs



## **Basis**

### **ABC (activity based costing):**

#### **Activities:**

Selection

Ingest

Processing

Documentation

Archive

Access

User support

#### **Proces**

Metadata

Preservation Management

Infrastructure

ICT

### **Quantitative data:**

Costs

Fte's

# TB

# Objects

### **Qualitative data:**

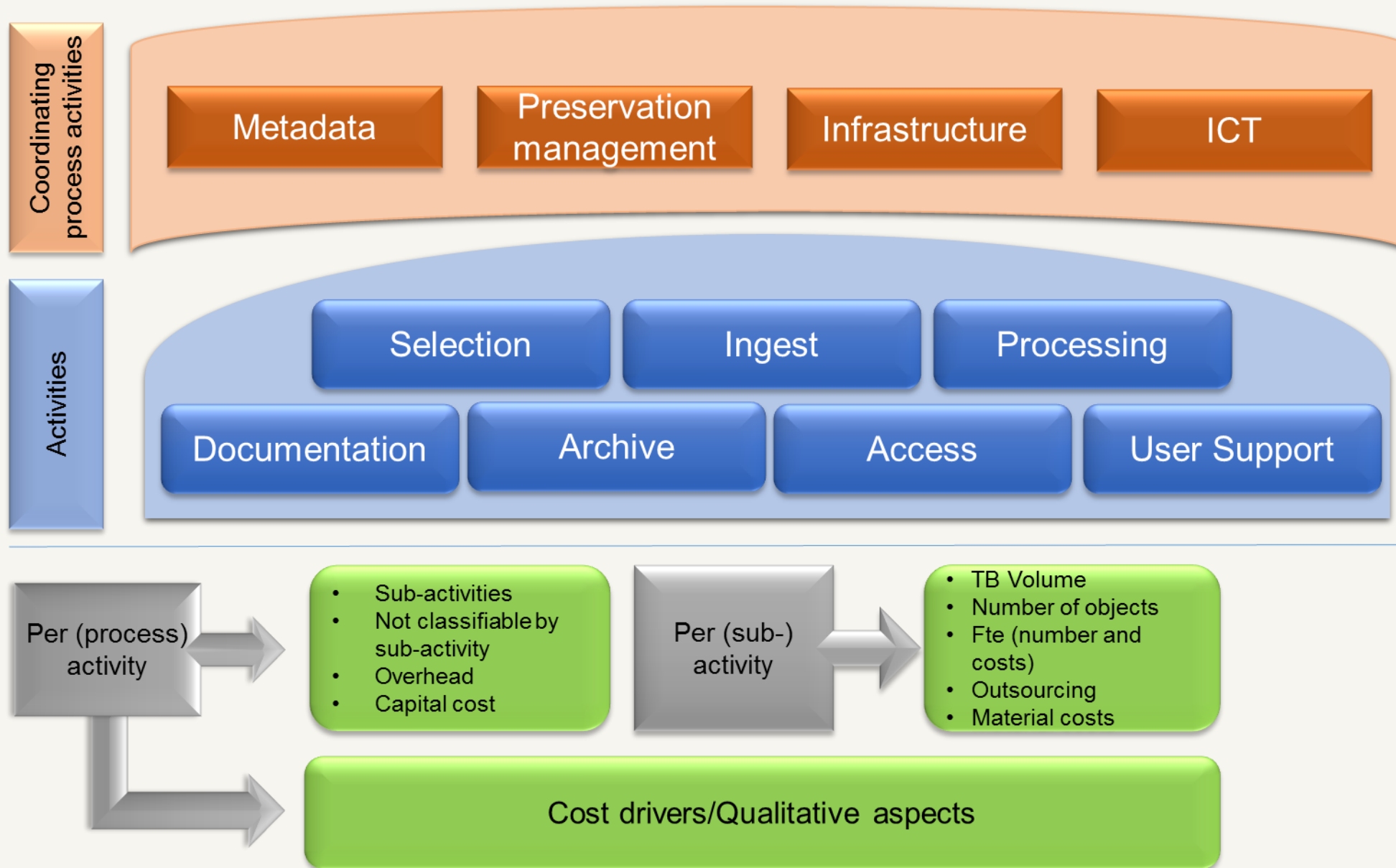
Objectives and context institution

Cost Drivers

### **Test by a pilot group of institutions:**

- Definitions
- Structure
- Logic of interrelationships of concepts





## ***Potential of the model***

### **Insight:**

- Cost per activity;
- Number of FTEs per activity;
- Quantity of TBs and objects of collections;
- Cost drivers – qualitative factors.

### **Compare:**

- Comparison on parts insight (per TB and per object);
- Trends and observations by comparison;
- Comparison in the first instance sectoral and exploration above sectoral;
- Link with the CCEx cost model – possibility to map the results to CCEx;

### **Forecasting:**

- Correlations between quantitative and qualitative data;  
(What is the effect of changes in the input on the costs')?
- Custom for CBAs.





## Participating institutions

### Name of the institution

National Archive (Nationaal Archief)

Royal Dutch Library (Koninklijke Bibliotheek)

City Archive of Rotterdam (Stadsarchief Rotterdam)

City Archive of Amsterdam (Stadsarchief Amsterdam)

Eye

International Institute of Social History (IISG)

Gemeentemuseum Den Haag

National Museum of World Cultures (Nationaal Museum van Wereldculturen)

Sound & Vision (Beeld & Geluid)

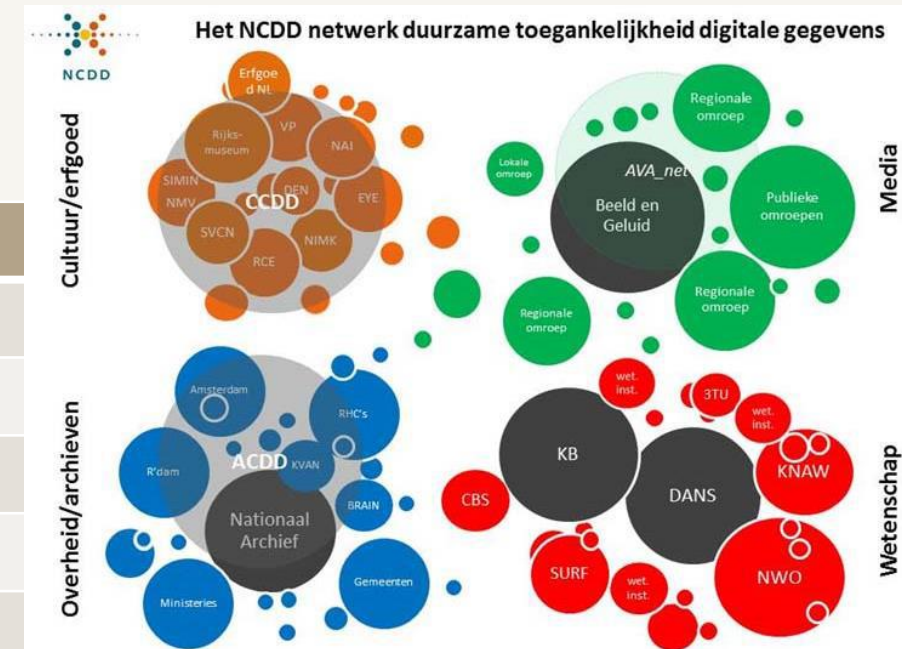
DANS

Dutch Photo Museum (Nederlands Fotomuseum)

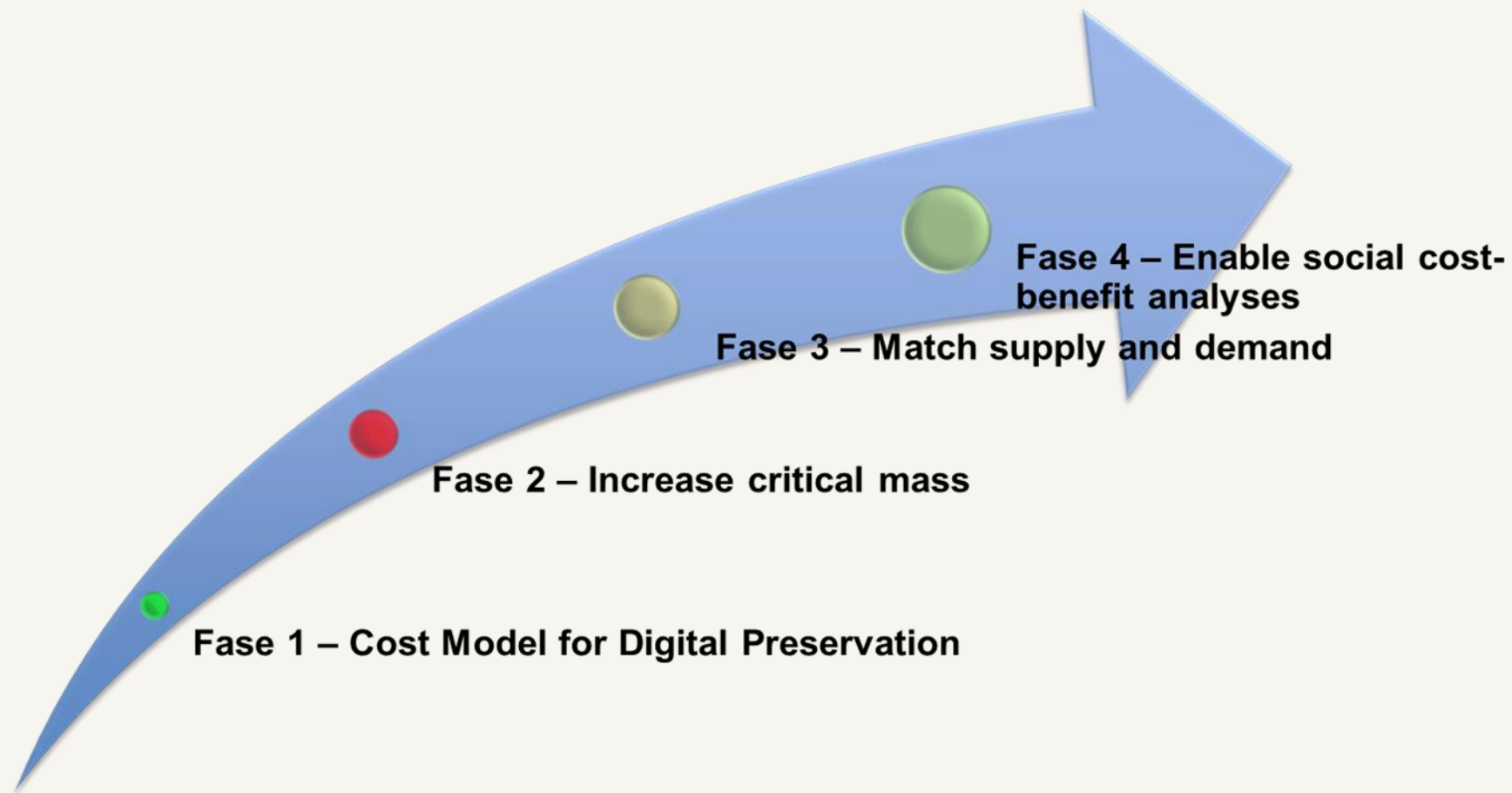
Tresoar

Historical Centre Overijssel (Historisch Centrum Overijssel)

SURFsara



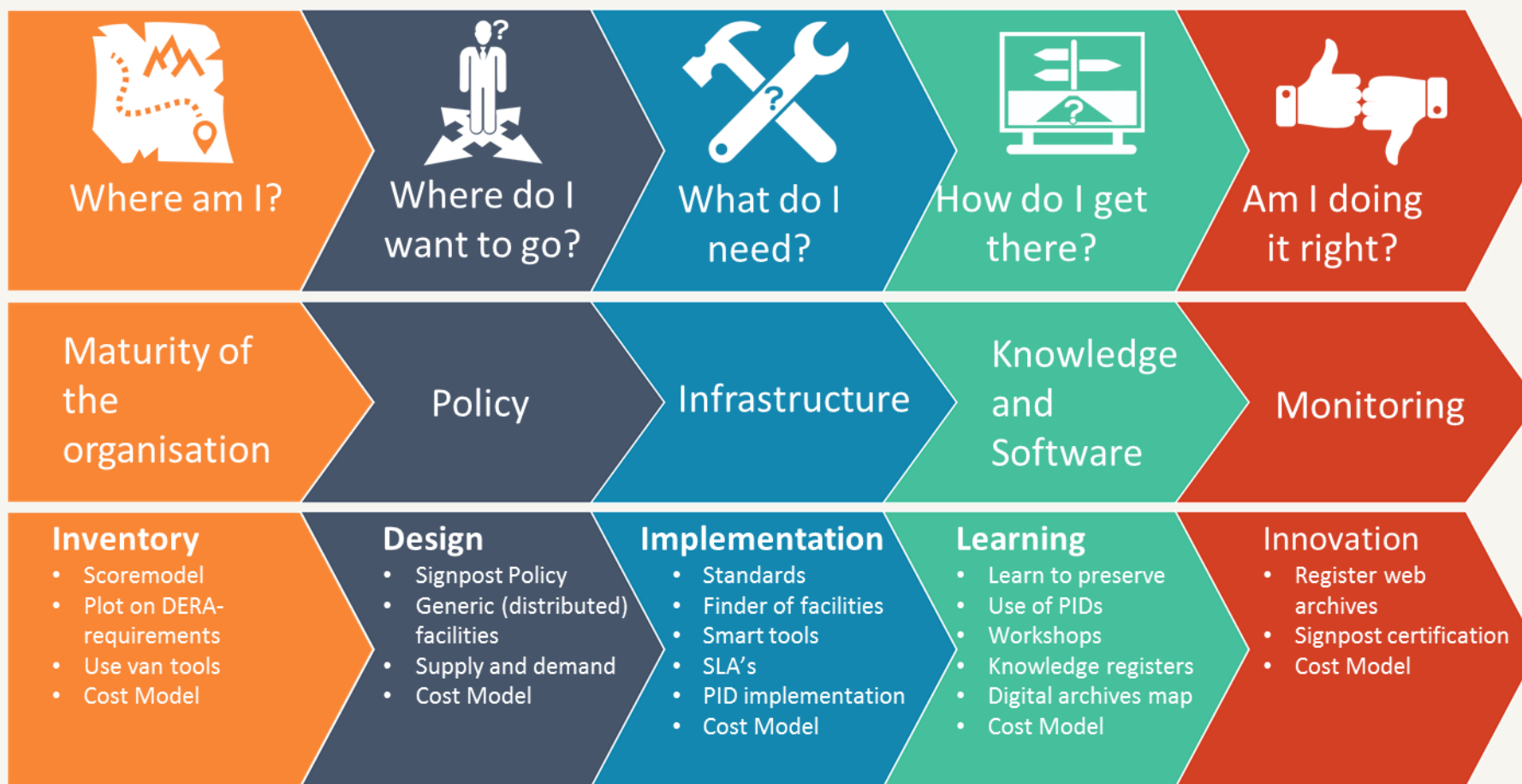
## *Roadmap as a guide*





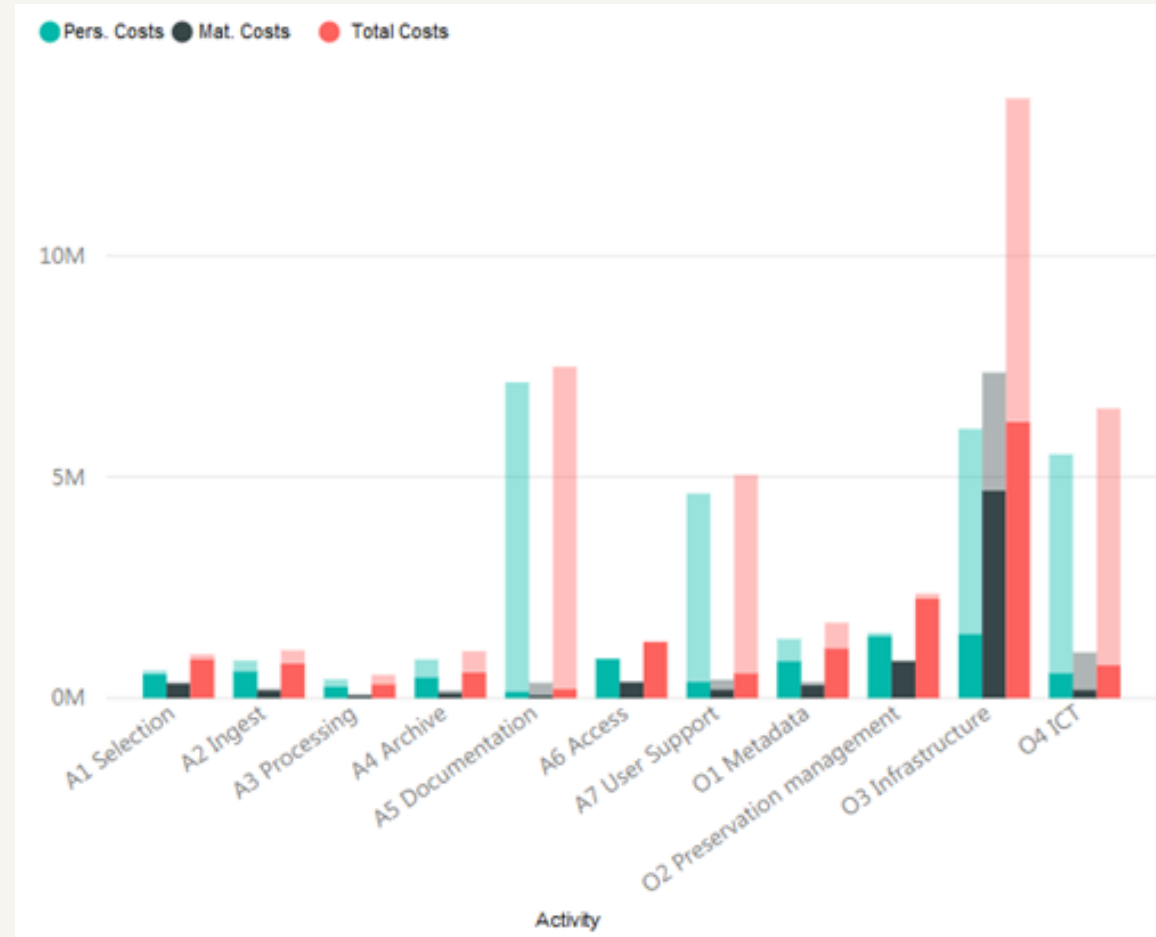
## *Link with other fields - preservation policy and shared services*

Costs are the result of policy choices



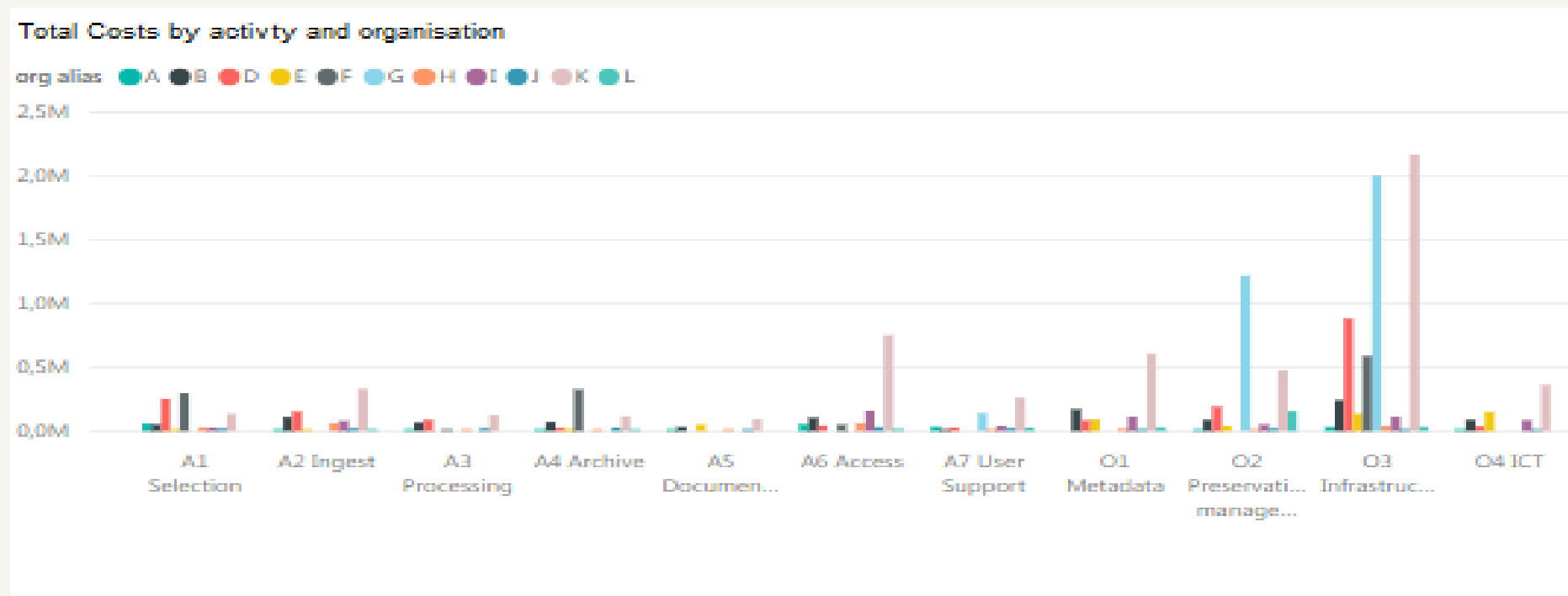
## Results

*Total costs (staff and material costs) of long-term digital accessibility, by process stage and coordinating process activities.*



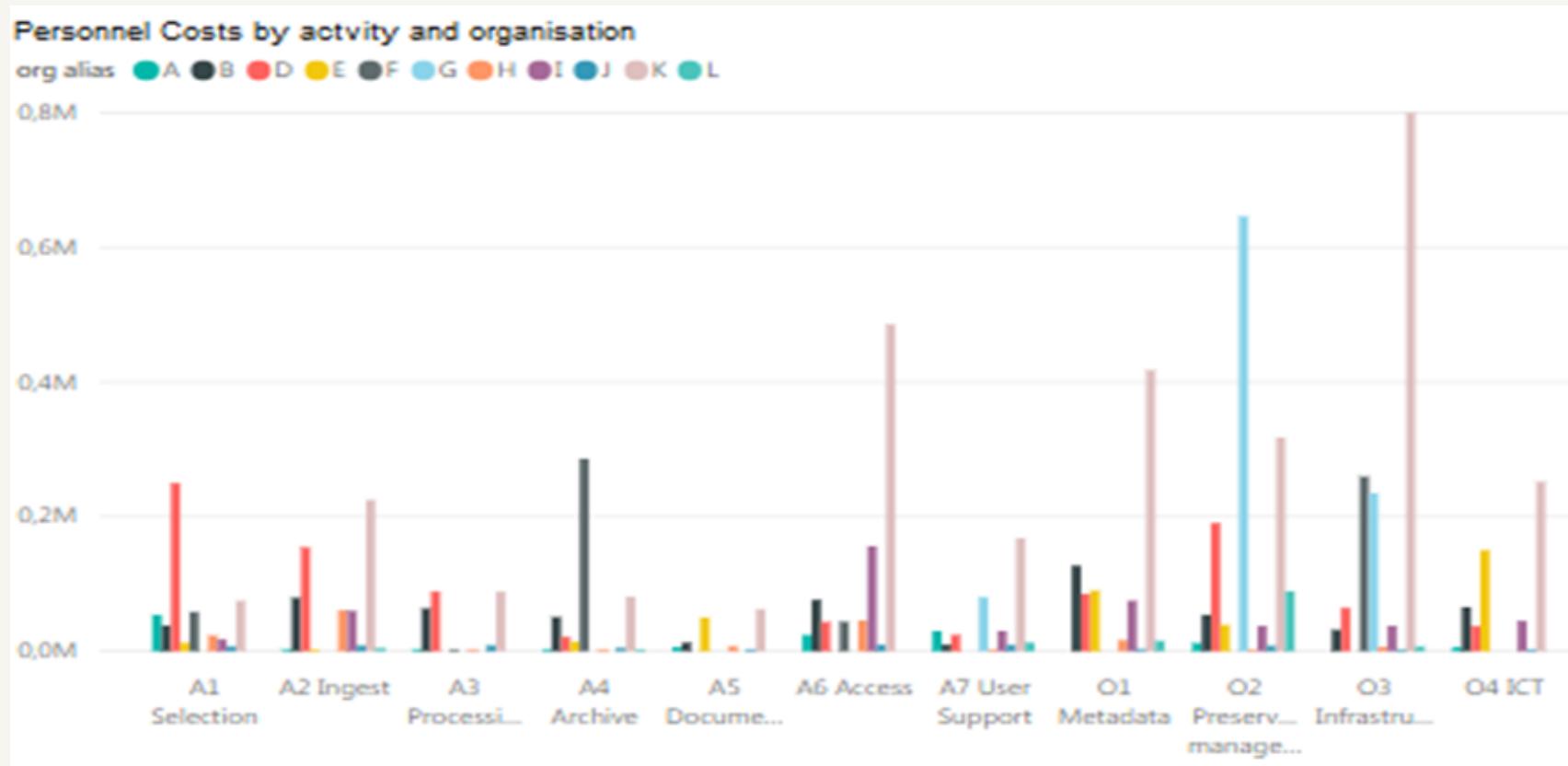
## Results

*Total costs per institution by process stage and coordinating process activities.*



## Results

*Staff costs per institution by process stage and overarching activity.*





# Questions and discussion

