

Data Preservation at a Conservatoire
Data Preservation Coalition
Future proofing digital preservation for
Research Data

31st May 2018



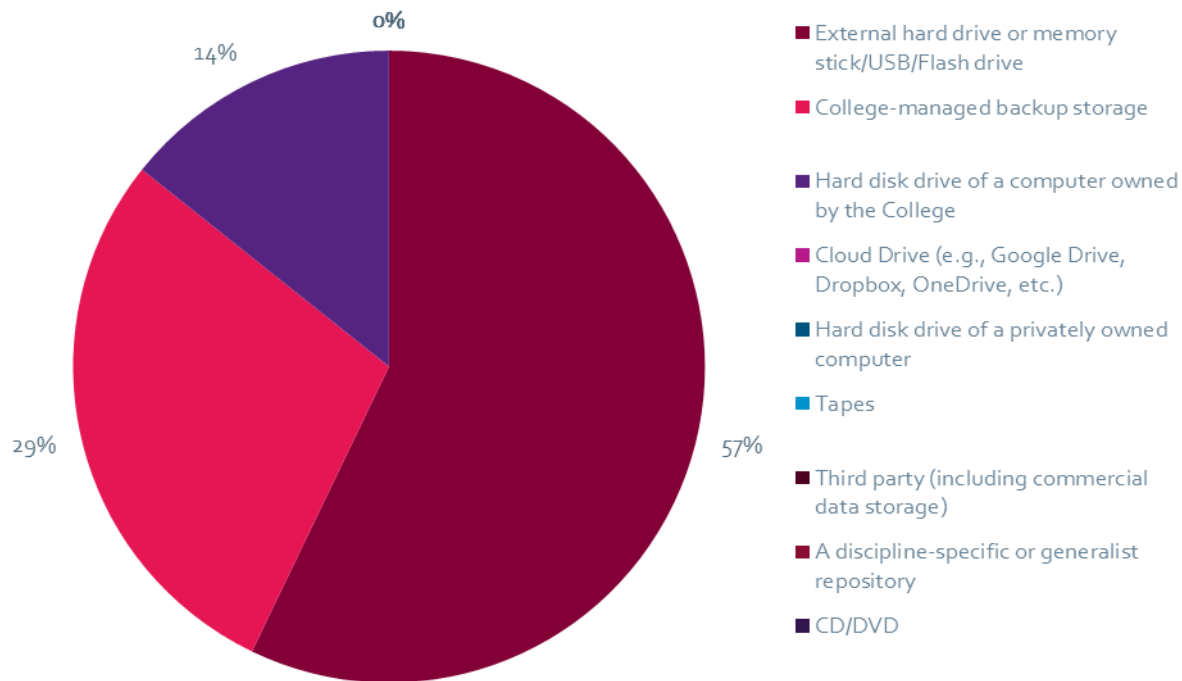
RCM and Research Data

- Heritage and ‘standard’ social science/scientific data sets
- With REF looming the Open Access Agenda is becoming more important
- GDPR has introduced additional complexity into data storage
- Our practice-based researchers aren’t aware of the data behind their work; in the main our composers don’t think of themselves as researchers
- Getting RCM systems to talk to each other – what is the point of having a secure storage system for RD if no one can find your public-facing outputs?



Research Data storage

What is your primary backup solution for your digital research data?



Heritage data preservation

Future proofing

We need a data preservation system which can cope with current **and** legacy formats.

RCM Studios and Museum have their own digital storage systems.

The Studios had a number of legacy-format items which were in danger of being lost.



Heritage data



Reel-to-reel tape in need of 'baking'



Some items were labelled, many blank – metadata had not been invented!

Preservation data samples

The Studios digitised:

50 x DAT tapes

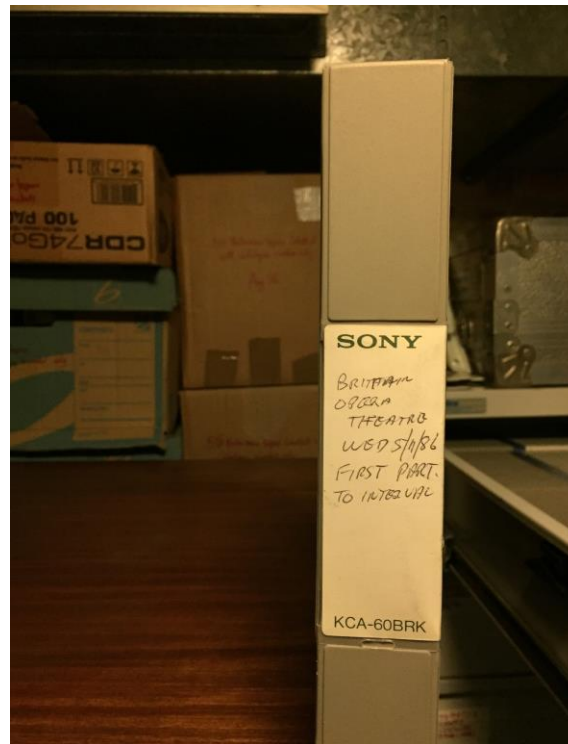
100 x CD/DVDs

60 x Betamax tapes

100 x reel-reels

20 x audio/video U-matic tapes

30 x VHS tapes



Music and Health Data

Centre for Performance Science

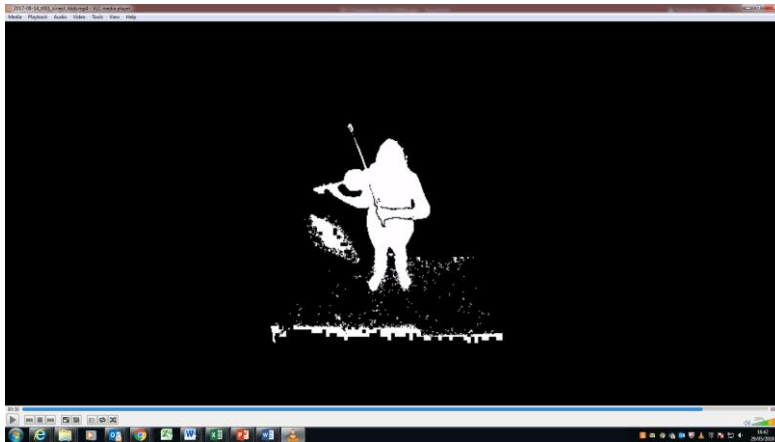
- Standard surveys and questionnaires from large scale projects such as AHRC funded Musical Impact with linked datasets
- Saliva samples from cancer survivors for Tenovus cancer choir
- Performance capture from TELMI project <http://telmi.upf.edu/>
<https://www.youtube.com/watch?v=Sh5vegBExY4&feature=youtu.be>



TELMi Project data types

- Kinect motion capture files – text, audio, video

746.919983 25 head point 0.507736 0.355501 left_ankle point 0.484917 0.654281 left_elbow point 0.404955 0.417794
left_fingertip point 0.341797 0.426887 left_foot point 0.472717 0.675718 left_hand point 0.345544 0.427674 left_hip point
0.488526 0.528949 left_knee point 0.491255 0.607373 left_shoulder point 0.461642 0.414066 left_thumb point 0.347006
0.430817 left_wrist point 0.347956 0.429336 neck point 0.508406 0.394033 right_ankle point 0.540177 0.671304 right_elbow
point 0.566969 0.495465 right_fingertip point 0.491385 0.516931 right_foot point 0.538709 0.695731 right_hand point
0.505405 0.518596 right_hip point 0.515278 0.529565 right_knee point 0.538987 0.619115 right_shoulder point 0.554044
0.434641 right_thumb point 0.509709 0.528891 right_wrist point 0.517578 0.522679 spine point 0.504779 0.465000
spine_base point 0.501815 0.529241 spine_shoulder point 0.507448 0.412480



RDSS Project Wish List

- Data Asset Framework, audit of research data storage requirements
- New researcher profile staff database - to link to -
- New Jisc research repository as data shop window - harvest data from -
- Preservica data repository – secure long term preservation platform to include e-theses



RDSS Project Questions

- **The RCM needs a data preservation policy**
- Road-testing Preservica with eg digitised Studios items: is it too clunky to use for non data preservation experts?
- Will the Jisc research repository do what we need it to as a front end for RCM data?
- Can we make a compelling case for spending money on data preservation? Cost point is too high at the moment to bring to Senior Management



CONTACT

Emma Hewett
Research & Knowledge Exchange
Manager

emma.hewett@rcm.ac.uk

020 7591 4734

@MusicResearchKE

