

Recommendations from the Task Force on Technical Approaches to Email Archives: DPC Briefing Day

Chris Prom, University of Illinois at Urbana-Champaign
Kate Murray, Library of Congress

January 24, 2018
Woburn House, London

Road Map

- Brief overview of TF & Publishing Plans
- Review integrated comments from July Briefing
- Overview of Current Draft
- Focus on Recommendations - Two Main Areas:
 - Community Development and Advocacy
 - Tool Support, Testing, and Development
- Discussion this afternoon: Feedback on Recommendations and DPC Report Update

About Us: Chris Prom

- Archivist and Andrew S. G. Turyn Professor, University of Illinois
- Publications Editor, Society of American Archivists
- 2011 DPC Tech Watch Report *Preserving Email*
 - Will be working on 2nd edition later this spring
- Project Partner EPADD Project (Stanford University)

About Us: Kate Murray

- NARA's Transfer Guidance (2014)
 - Individual messages: XML and MSG
 - Aggregated messages: PST and MBOX
- Sustainability of Digital Formats website (2014-current):
<https://www.loc.gov/preservation/digital/formats/index.html>
- NDSA Email Interest Group (2014-2015)
- Archiving Email Symposium (2015):
<http://www.digitalpreservation.gov/meetings/archivingemailsymposium.html>
- Harvard EAST Workshop (2016)
- LC email collections starting to come in

Sponsorship

THE
ANDREW W.

MELLON
FOUNDATION



Digital**Preservation**Coalition

Charge

- (a) examine and assess current efforts to preserve email;
- (b) articulate a conceptual and technical framework in which these efforts can operate not as competing solutions, but as elements of an interoperable toolkit to be applied as needed;
- (c) construct a working agenda for the community to construct this technical framework, adjust existing tools to work within this framework, and begin to fill in missing elements.

<http://www.emailarchivestaskforce.org>

Membership

Executive Committee

Kate Murray (co-chair), Library of Congress

Christopher Prom (co-chair), University of Illinois at U-C

Fran Baker, University of Manchester

Matthew Connelly, Columbia University

Wendy Gogel, Harvard Library

Hillel Arnold, Rockefeller Archive Center

Courtney Cain, Lake Forest College

Euan Cochrane, Yale University Library

Kevin DeVorse, National Archives and Records Administration

Glynn Edwards, Stanford University Libraries

Riccardo Ferrante, Smithsonian Institution Archives

William Kilbride, Digital Preservation Coalition

Jessica Meyerson, Educopia Institute

Erin O'Meara, University of Arizona Libraries

Michael Shallcross, University of Michigan

Joel Simpson, Artefactual Systems

Camille Tyndall Watson, State Archives of North Carolina

Richard Whitt, Google

Julian Zbogor-Smith, Microsoft

Friends and Consultation Pathways

- Council of State Archivists/NAGARA (Webinars)
- National Historical Publications and Records Commission (NHPRC)
- North Carolina Department of Natural and Cultural Resources
- Coalition for Networked Information (CNI, April 2017 and upcoming Exec Roundtable April 2018)
- Digital Preservation Coalition: UK Briefing Days



Bibliography

Bibliography

Archivists and Librarians in the History of the Health Sciences. "HIPPA Resource Page." *Archivists and Librarians in the History of the Health Sciences*. Accessed November 16, 2016. http://www.alhhs.org/hipaa_sthc_alhhs.html. (CITE)

Abstract: This website, compiled by members of the American Archivists' Science, Technology, and Health Care Roundtable (STHC) and the Archivists and Librarians in the History of Health Sciences (ALHHS), provides information on how the Health Insurance Portability and Accountability Act of 1996 (HIPPA) impacts historical research in libraries, archives, and other record repositories.

Bernstein, DJ. "Internet Mail Message Header Format." Accessed October 10, 2016. <http://cr.yp.to/immhf.html>. (CITE)

Abstract: These pages are designed to be a complete, correct, comprehensible reference for the format of an Internet mail message header. They explain what shows up in today's Internet mail messages; what today's mail-reading programs can handle; and what the IETF header-format specifications say.

Centers for Medicare, Medicaid Services 7500 Security Boulevard Baltimore, and Md21244 Usa. "Are You a Covered Entity?," 6–31, 2016. <https://www.cms.gov/Regulations-and-Guidance/Administrative-Simplification/HIPAA-ACA/AreYouaCoveredEntity.html>. (CITE)

Abstract: Information and covered entity chart to help industry understand if they are a covered entity.

Our Timeline

- Next few weeks: Incorporate feedback from this consultation and finalize draft
- Feb 28: Submit manuscript to Council on Library and Information Resources
- May: Final version of report published

Previous Comments from DPC Briefing and Other Sources

- Emphasize need to building a user community (show what can be gained).
- Challenge of “Sensitive Emails”
 - UK: GDPR
 - US: Similar Presumption of Risk
- Processing Email at Scale
- More emphasis on importance of artificial intelligence in classifying and identifying sensitive emails
- Reference research about what users want out of email collections.

More Comments from Public Review

- Report serves as both a call to arms about importance of access to email archives and exploration of technical needs to facilitate preservation
- Need for “skilling up” of workforce on digital technology literacy
- Need for sustainability plans for open source tools - move away from limited term funding to programmatic and supported solutions

Section 1:

The Untapped Potential of Email Archives

Email Matters

G.  R.

YOUR KING & COUNTRY NEED YOU

A CALL TO ARMS

An addition of 100,000 MEN to His Majesty's Regular Army is immediately necessary in the present grave National Emergency.

LORD KITCHENER IS CONFIDENT THAT THIS APPEAL WILL BE AT ONCE RESPONDED TO BY ALL THOSE WHO HAVE THE SAFETY OF OUR EMPIRE AT HEART.

TERMS OF SERVICE

General Service for a period of 3 years or until the war is concluded.
Age of Enlistment, between 19 and 30.

HOW TO JOIN

Full information can be obtained at ANY POST OFFICE IN THE KINGDOM or at ANY MILITARY DEPOT.

GOD SAVE THE KING

The fact of the matter is that all the richness of email collections will remain dark until we as a community of archivists, technologists and scholars solve the technical issues inherent in its long term preservation and availability for use.

Epitaphs of the Great War:

<http://www.epitaphsofthegreatwar.com/call-to-arms/>

Email is the Story Keeper

Precisely because it's inescapable, insecure and irresistibly convenient,
email provides an almost uncomfortably intimate view into the
historical record. It preserves time, location and state of mind, the
what-when-where-and-who of every story we might want to dig up. The
last two decades, email's high-water era, have thus been a bounty for
anyone wishing to understand exactly what was happening in the inner
circles of powerful organizations — for journalists, historians and
prosecutors of white-collar crime, among others.

So What Needs to Change in Archival Processes?

- Embrace email as complex research data
- Harness new technology such NLP and machine learning for actionability not easily imaginable for paper
- Encourage content creators to take active role in preservation, even for personal papers
- Build toward greater tool interoperability and toward deeper community integration

Section 2: The Email Lifecycle

Email as ...

Organizational Record

- Documents discussions, decisions, and actions performed in the course of business
- Retention governed by legal or regulatory environment of the institution & business needs of the organization
- Disposition according to records management system & schedules
- Can be seen as liability

Personal Record/Donated Materials

- Less defined creation story, can be their own, or their family's, digital archive, sometimes outside of a corporate record keeping structure
- Little/no organization or retention planning
- May not be considered part of larger "digital archive"
- Communication of expectations (privacy, security, access) and institutional capabilities via donor agreement is essential

Creation

- Email client dictates format, metadata
- RM rules might apply

Transit

- IMF & MTA assist in moving the structured data across disparate systems

Receipt

- Email client dictates format, metadata
- RM rules might apply

Active Use

- Communication
- Documentation
- Reminders
- Actions
- Appointments
- Passwords

As Record

- Self appraisal
- Self selection
- Archival appraisal
- Archival selection
- RM rules might apply

Archive

- Disposition
- Transfer and Acquisition
- Transfer
- Ingest
- Implementation of preservation strategy

Research

- Discovery
- Access
- Use

Section 3:

Email as a Documentary Technology

What **IS** email?



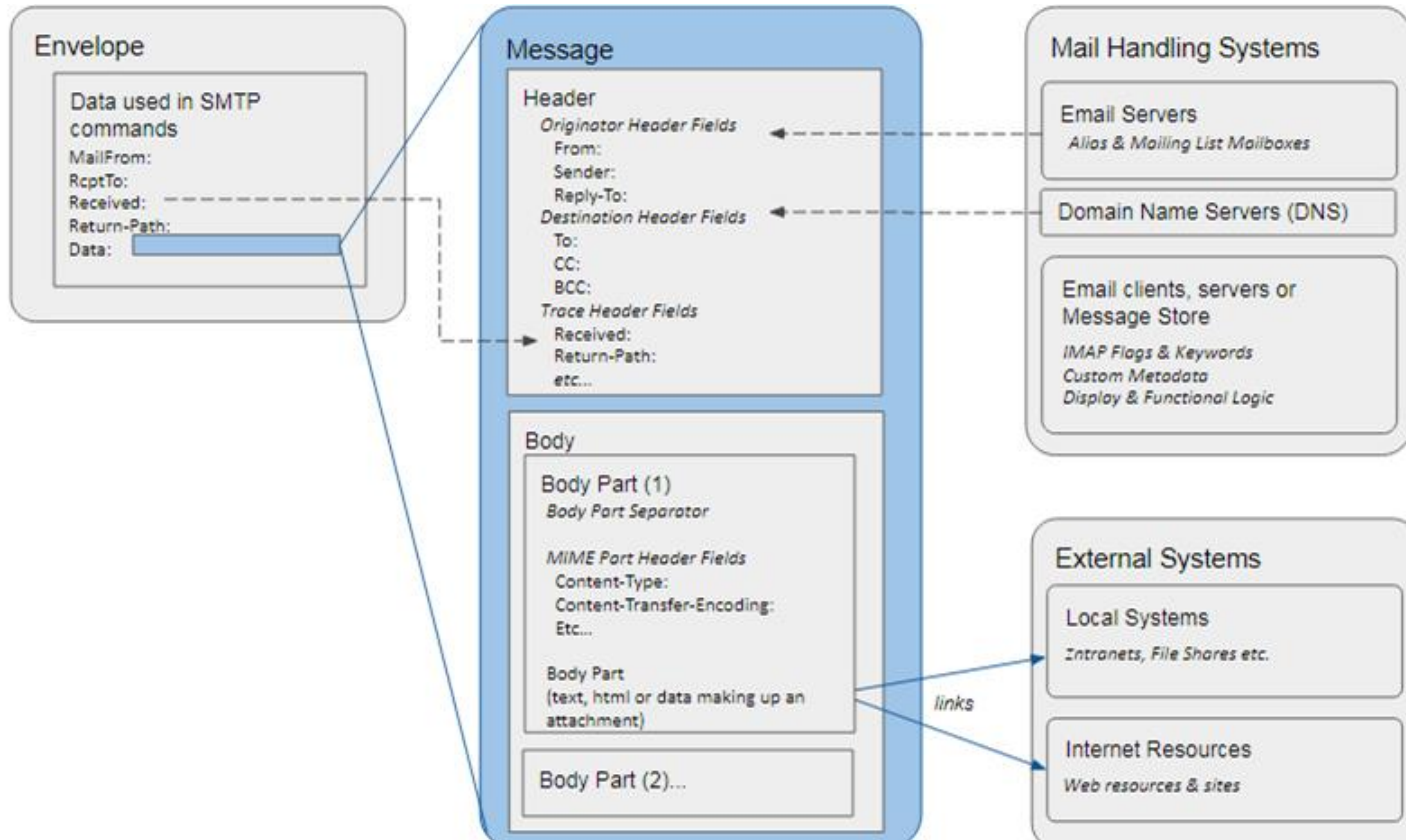
And Why Bother with it?



Email System Architecture

- Global Addressing
- Interoperability
- Asynchronicity
- Redundancy/Best Effort Delivery
- Dispersion
- Backward Compatibility
- Extensibility

Email Message Data Model



Other elements of Email

- Accounts
- Data Transmission Model
- Security and Encryption
- “Beyond the ASCII Message”



Section 4:

Current Services and Trends

Evolving Email Ecosystem: Abuse Prevention



authentication-results: spf=none (sender IP is)

x-microsoft-exchange-diagnostics:
1;BN6PR14MB1426;7:

x-ms-exchange-antispam-srfa-diagnostics:
SSOS; . . .

x-ms-office365-filtering-correlation-id: d8d3932d-
150c-4d60-b8b4-08d561a63625

x-microsoft-antispam:

Compliance and Legal Discovery Tools



- Retention Management
- Journalling or 'Archiving'
- E-Discovery

Image Credit:
<https://www.newyorker.com/cartoons/bob-mankoff/the-cartoon-lounge-grim-and-bear-it>

Repository Challenges (1)

1. Capture:

- a. Direct export
- b. Web service exports
- c. Client-based exports
- d. Disk imaging

2. Ensuring Authenticity/Tracking Processing Actions



Graphics Credit: Digital Preservation Business
Case Toolkit <http://wiki.dpconline.org/>

Repository Challenges (2)

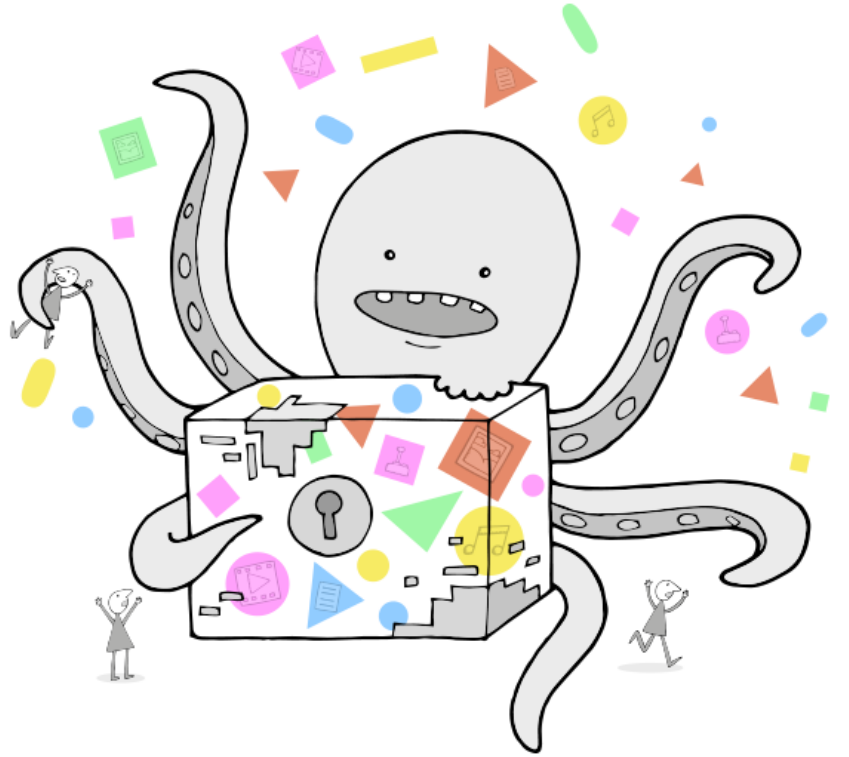
4. Attachments and
Linked Content

5. Security and
Privacy

6. Processing at
Scale: Large or
Many Collections



Section Five: Potential Solutions and Sample Workflows



Preservation Approaches:

Begins with Account
and Format Analysis



Preservation Approaches:

- Bit Level: Possibly Appropriate for Embargoed Collections
- Format Migration
 - Many email tools are format dependent
 - Migration is always a risk vs reward conversation:
 - Some formats play better together than others
 - Open non-proprietary formats are better than closed, proprietary formats
- Emulation
 - Recreating user experience for both message and attachments in original context
 - Software Preservation Network:
<http://www.softwarepreservationnetwork.org>

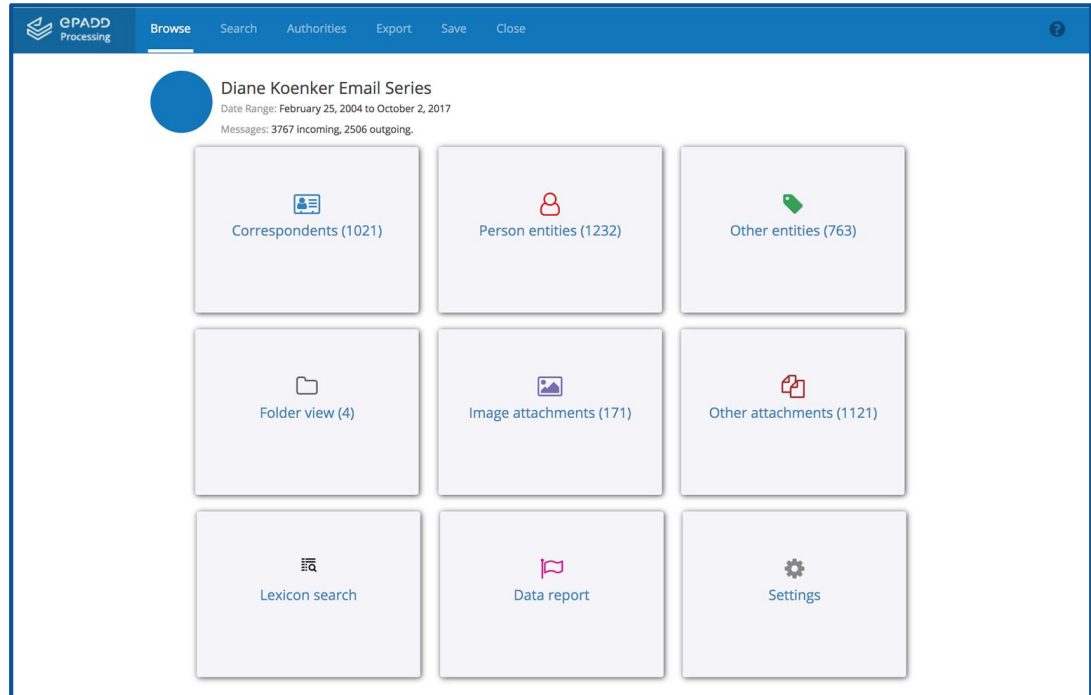
Tools within Cultural Heritage Domain

- Key to interoperability, scalability, preservation and access
- Several are usable and maturing--with more work coming.



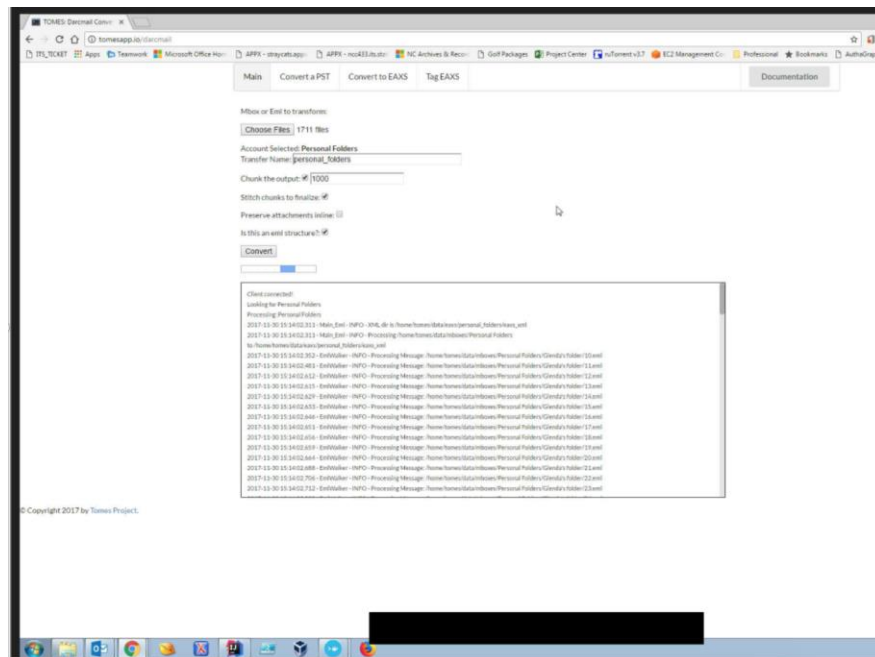
EPADD: Process, Appraise, Discover, Deliver

- Stanford University
- Import via IMAP, PST and MBOX
- Export Mbox
- Entity Extraction and NLP Tools
- Discovery and Delivery environment



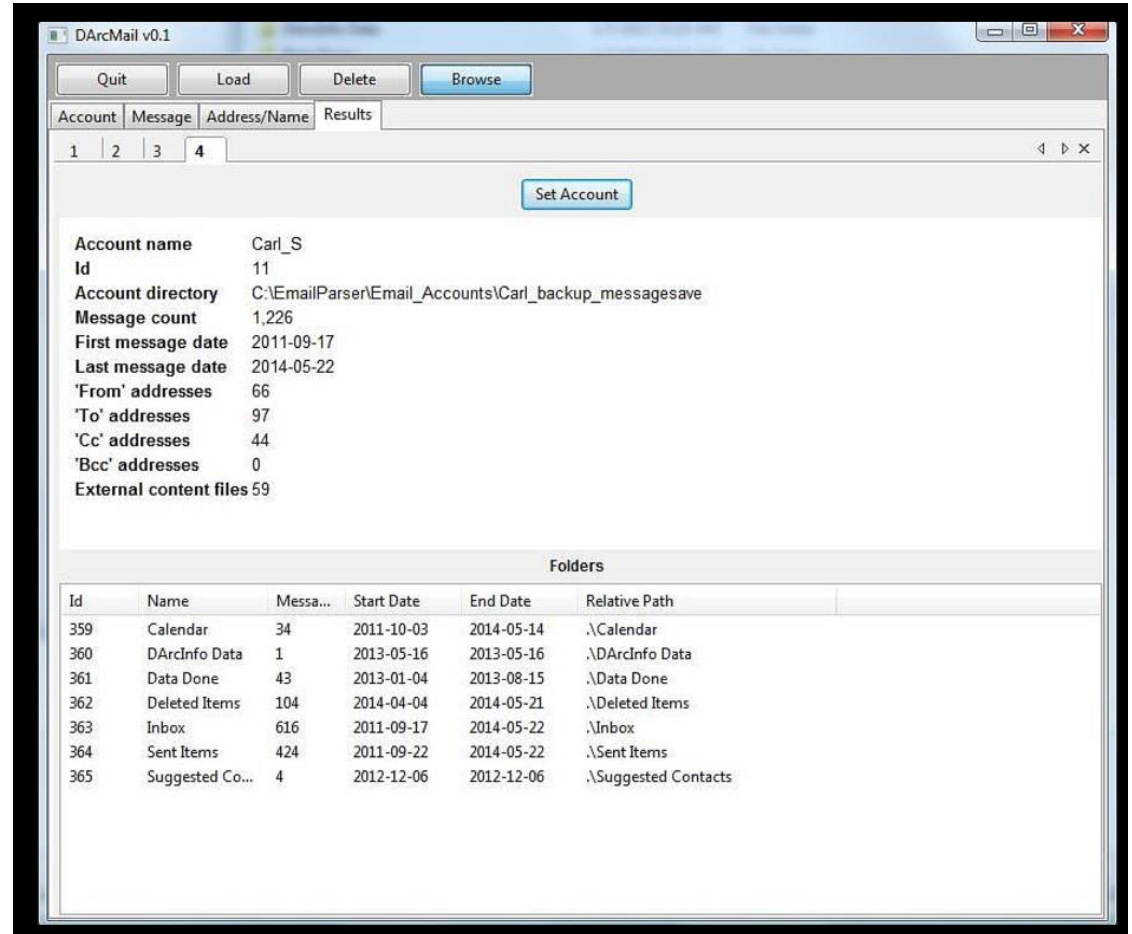
TOMES

- Cross-platform .pst to EAXS XML parser
- Process Capstone Accounts
- NLP dictionary flagging named entities unique to government at the state and local level
- Training Materials



<https://www.ncdcr.gov/resources/records-management/tomes>

- DArcMail
- Smithsonian-led Project
- Converts MBOX files to EMail Account XML Schema (EAXS).



Harvard Electronic Archiving System - EAS

The screenshot shows the Harvard Electronic Archiving System (EAS) interface. At the top, the account is 'HUL TEST'. The main navigation bar includes 'PACKETS', 'SEARCH', 'WORDSHACK', 'COLLECTIONS', 'ACCOUNTS', and 'SYSTEM INFO'. The 'BRIEF DISPLAY' tab is active. Below the navigation bar, there is a search bar with the text 'Search for', a dropdown for 'Item type' set to 'all', and a dropdown for 'Results per page' set to '10'. There are also links for 'edit metadata', 'Delete', and 'Push to DRS'. A table of search results is displayed below, with columns for 'Select', 'EASi ID', 'Item type', 'From (display)', 'From (email)', 'To (display)', 'Date sent', and 'Subject'. The table contains 10 rows of results. At the bottom of the page, there is a pagination bar with links for '<< Previous', '1', '2', '3', '458', 'Next >>', and 'displaying 1 to 10 of 4578'.

Annotations on the screenshot:

- Search or filter to retrieve content
- Push selected items to DRS
- Opens bulk editing panel
- Click EASi ID to display item
- Results list navigation
- Number of results

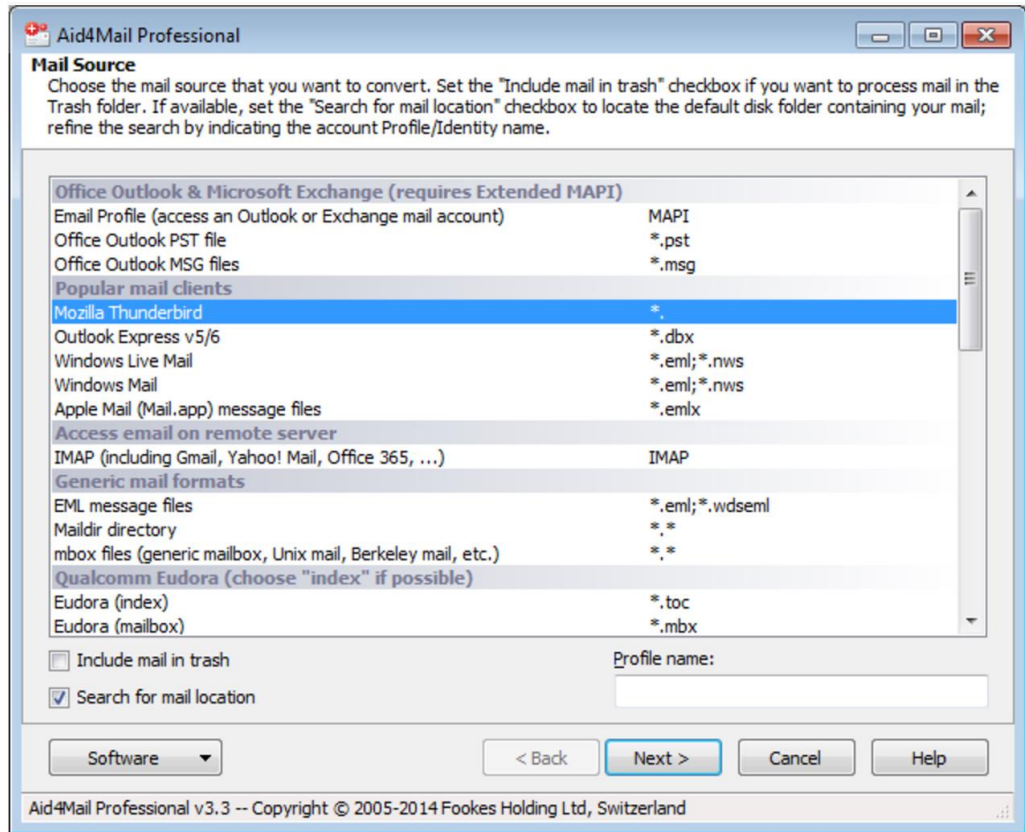
Select	EASi ID	Item type	From (display)	From (email)	To (display)	Date sent	Subject
<input type="checkbox"/>	55				Wendy Gogel	2009-07-31T22:19:12Z	Re: EMAP - minutes of June 30 meeting on de-dup
<input type="checkbox"/>	57		Skip Kendall	arvel_kendall@harvard.edu		2009-06-29T19:42:58Z	EMAP - scheduling more meetings
<input type="checkbox"/>	163		Skip Kendall	arvel_kendall@harvard.edu		2009-09-08T22:00:49Z	User requirements document
<input type="checkbox"/>	165		Wendy Gogel	wendy_gogel@harvard.edu	Susan von Salis	2009-08-06T18:21:53Z	Re: EMAP - minutes of June 30 meeting on de-dup
<input type="checkbox"/>	166					2009-06-19T19:48:00Z	EMAP - Meeting on Monday
<input type="checkbox"/>	169		Wendy Gogel	wendy_gogel@harvard.edu		2009-06-25T15:43:50Z	Fwd: Re: Please update a email list
<input type="checkbox"/>	173		Wendy Gogel	wendy_gogel@harvard.edu	Andrea Goethals, Mar	2009-08-06T19:03:52Z	RE: EMAP - minutes of June 30 meeting on de-dup
<input type="checkbox"/>	175		Patti Fucci	patti_fucci@harvard.edu		2009-10-01T16:39:17Z	sencond meeting
<input type="checkbox"/>	181		Susan von Salis	susan_vonsalis@harvard.edu	Wendy Gogel	2009-08-03T13:41:13Z	Re: EMAP - minutes of June 30 meeting on de-dup
<input type="checkbox"/>	182					2009-05-07T12:40:00Z	

<http://library.harvard.edu/preservation/email-archiving>

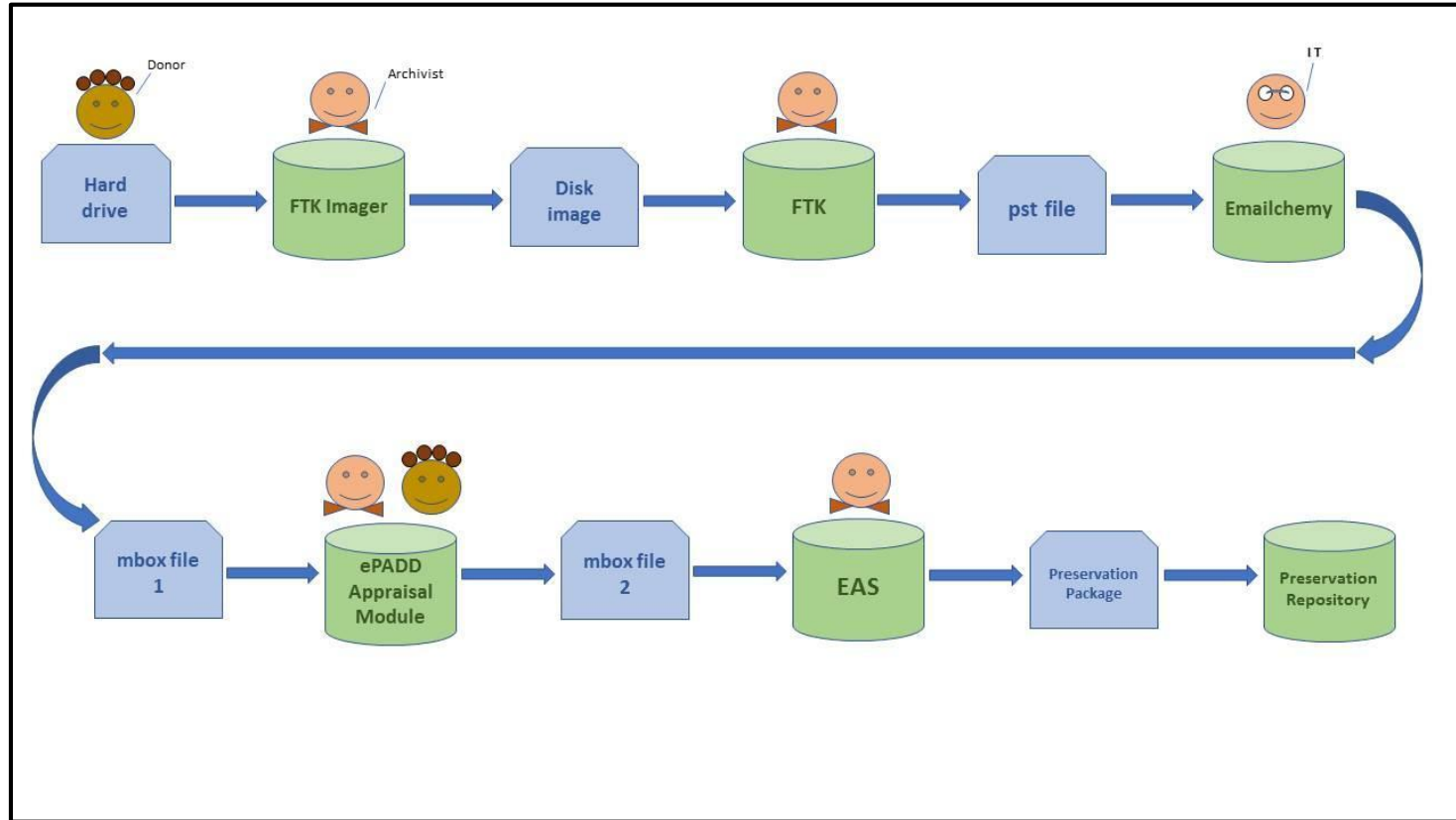
Proprietary Tools

- Aid4Mail
- Emailchemy,
- Mailstore,
- Access Data FTK,
- Preservica

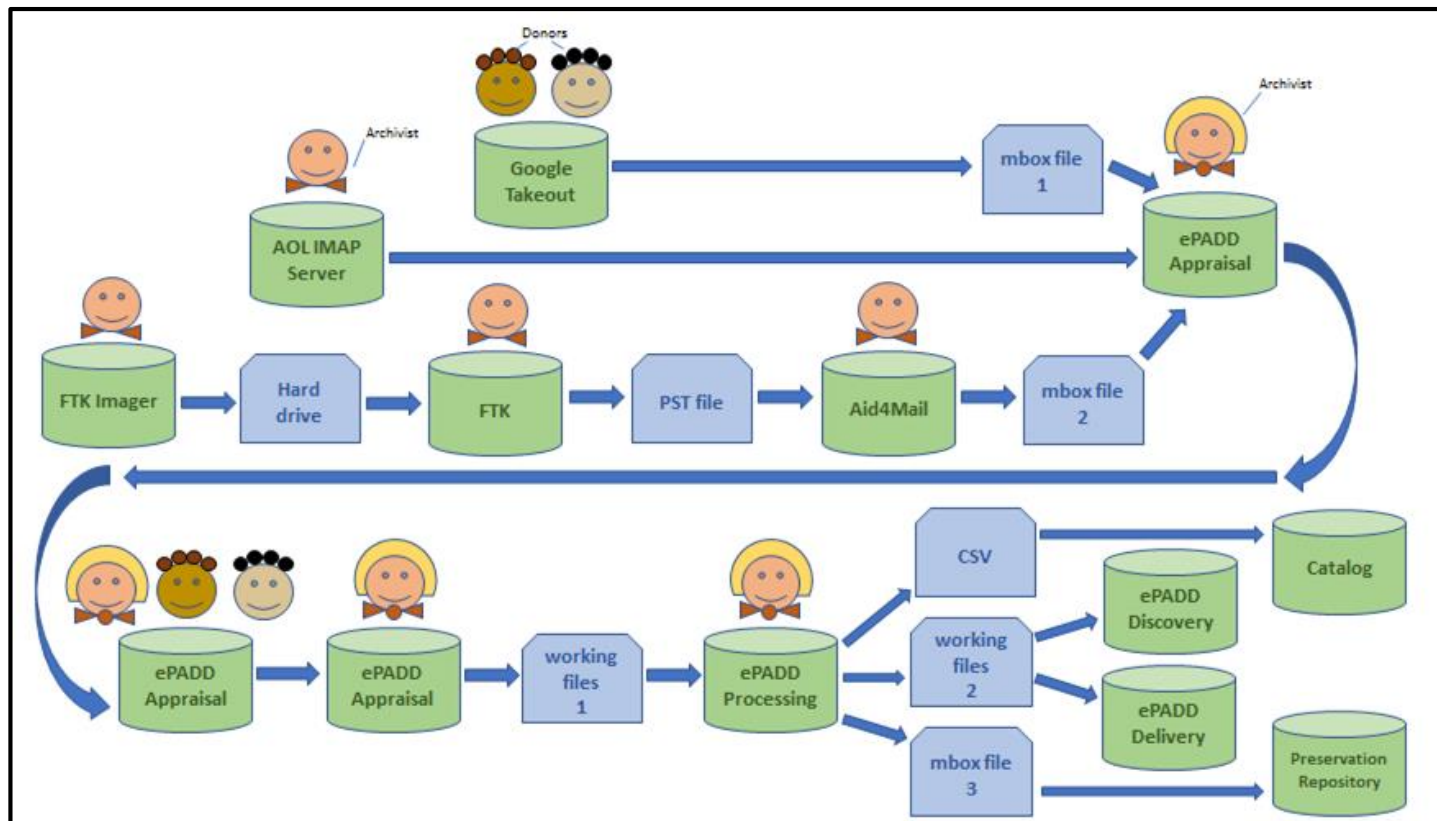
Also: Rest APIs



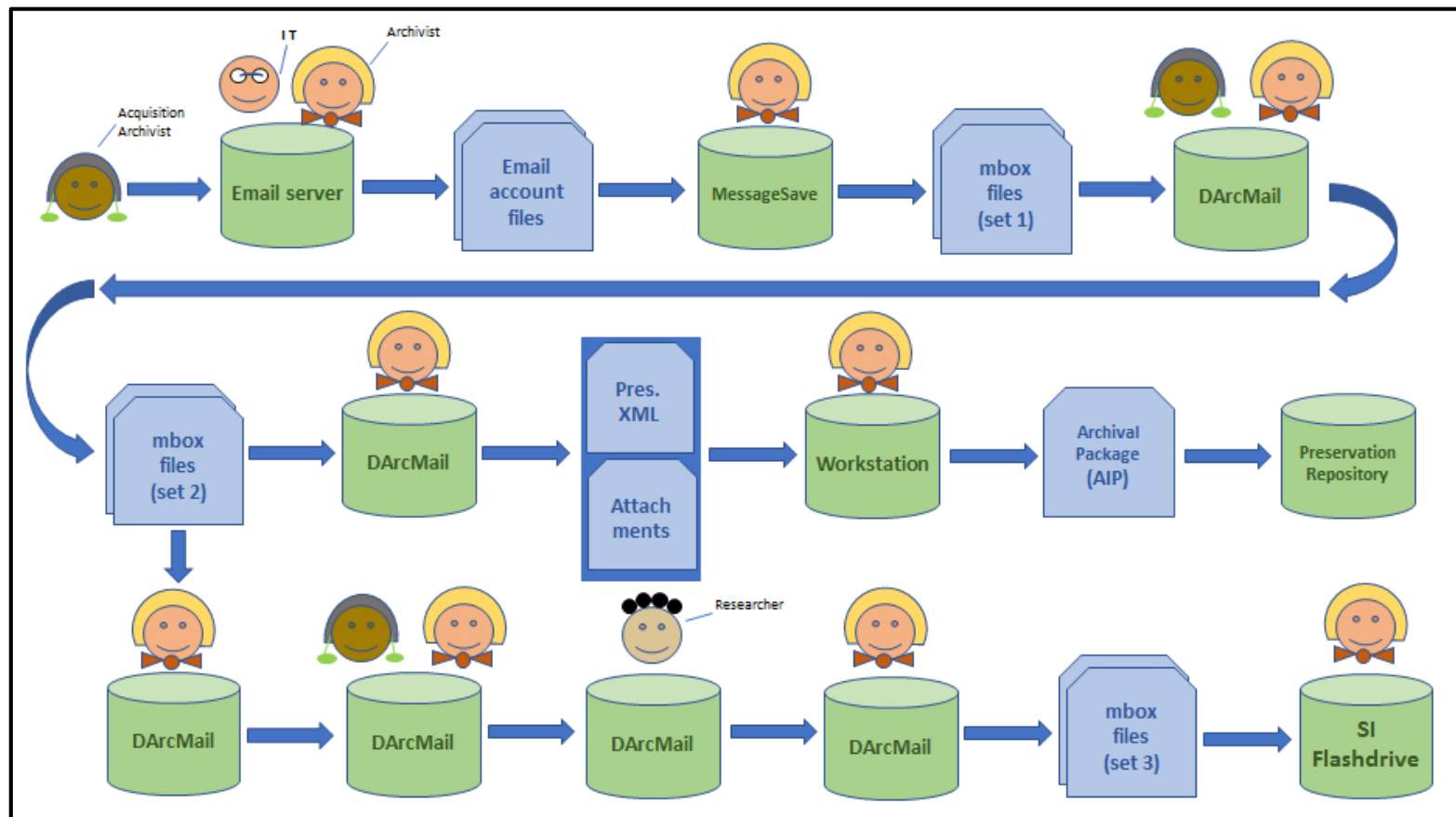
Workflow Scenario: Migration @ Harvard



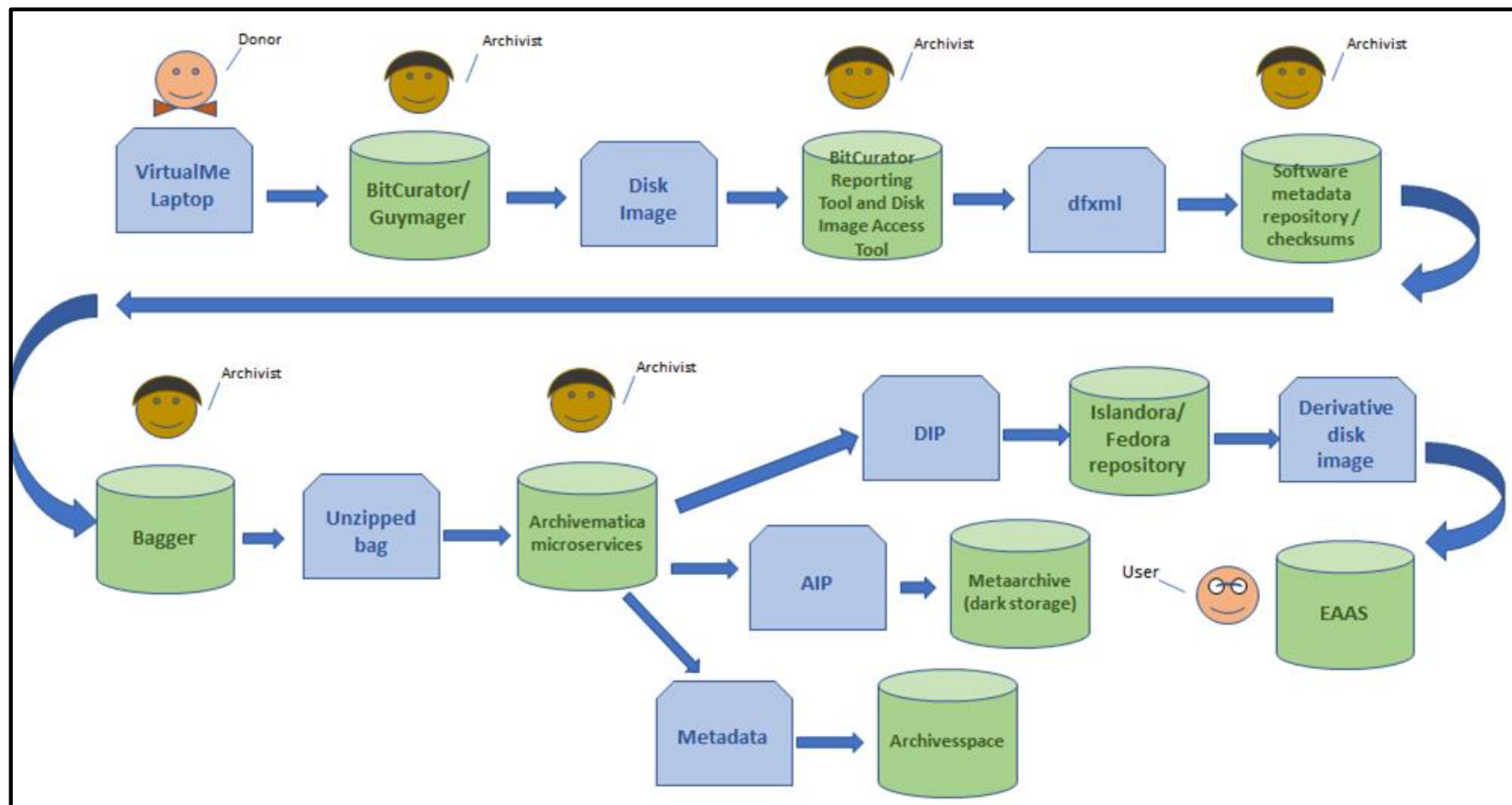
Migration @ Stanford with ePADD



Smithsonian XML Migration Scenario



WORKFLOW SCENARIO: ACCESSING AN ENTIRE DISK IMAGE - EMAIL & ATTACHMENTS - WITH EMULATION



Section Six: The Path Forward and Next Steps



Community Development and Advocacy (nurturing and fostering)

Lower-Barrier Activities:

- Assess Institutional Readiness
- Training and Skills Development
- Demystify Email Archiving for Collection Donors
- Maintain Assessment of Email Tools in COPTR Registry
- Develop Format Comparison Matrix

Community Development and Advocacy (nurturing and fostering)

Higher-Impact Activities:

- Sustain the Email Archiving Community
- Specification Planning for Beginning-of-lifecycle Email Tools
- Develop Criteria for Email Authenticity
- Improve Standards Documentation for MBOX and EML
- Improve Options for PDF in Email Archiving Workflows

Tool Support, Testing, and Development

Lower-Barrier Activities:

- Test Existing Tools for Data Impact and Data Loss
- Improve Format Identification, Characterization, and Validation Tools for Email Formats

Tool Support, Testing, and Development

Higher-Impact Activities:

- Sustaining and Integrating Existing Tools
- Develop Email Self-archiving Tool
- Develop Standards For Tool Interoperability with a Reference Implementation
- Improved Tools for Sensitivity Review

Questions, Feedback, Discussion

Chris Prom: prom@illinois.edu

Kate Murray: kmur@loc.gov

<http://www.emailarchivestaskforce.org>