

DPC Event 18th of June



UNIVERSITY OF
CAMBRIDGE

Cambridge University Libraries

FRED & Friends

Leontien Talboom, Technical Analyst



Transfer Service



Started running in February
2023

Over 500 carriers have
been transferred

Logical file transfer versus
a disk image

Configuration of FRED

FRED runs on a
Windows Environment

FRED has a write
blocker

FRED has a 5.25-inch
floppy drive



FastCopy

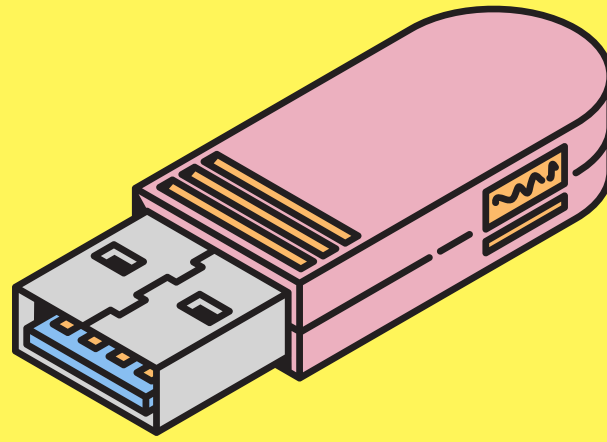


FTK Imager

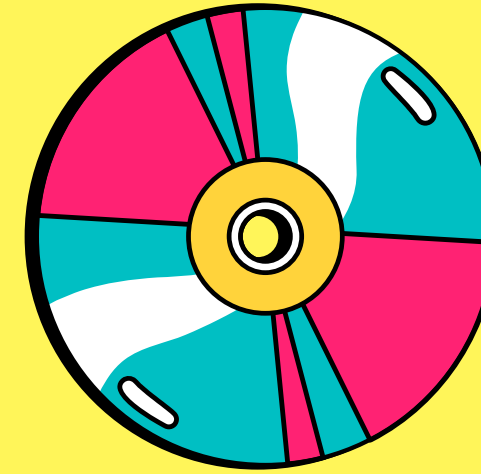


Roadkil's
Unstoppable
Copier

***What does
FRED
process?***



USB-Sticks



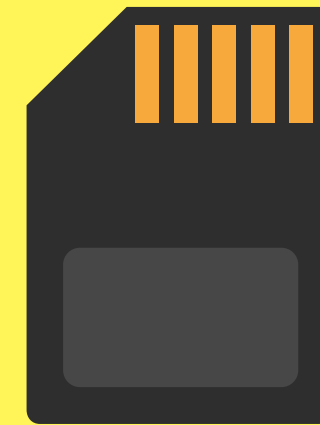
Optical Discs



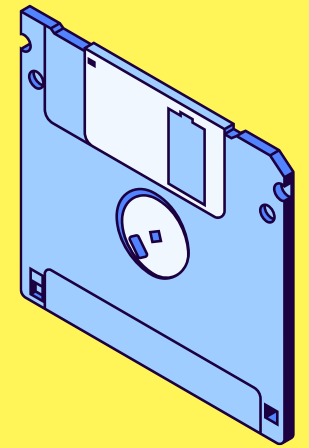
ZIP Disks



Hard Drives



Memory Cards



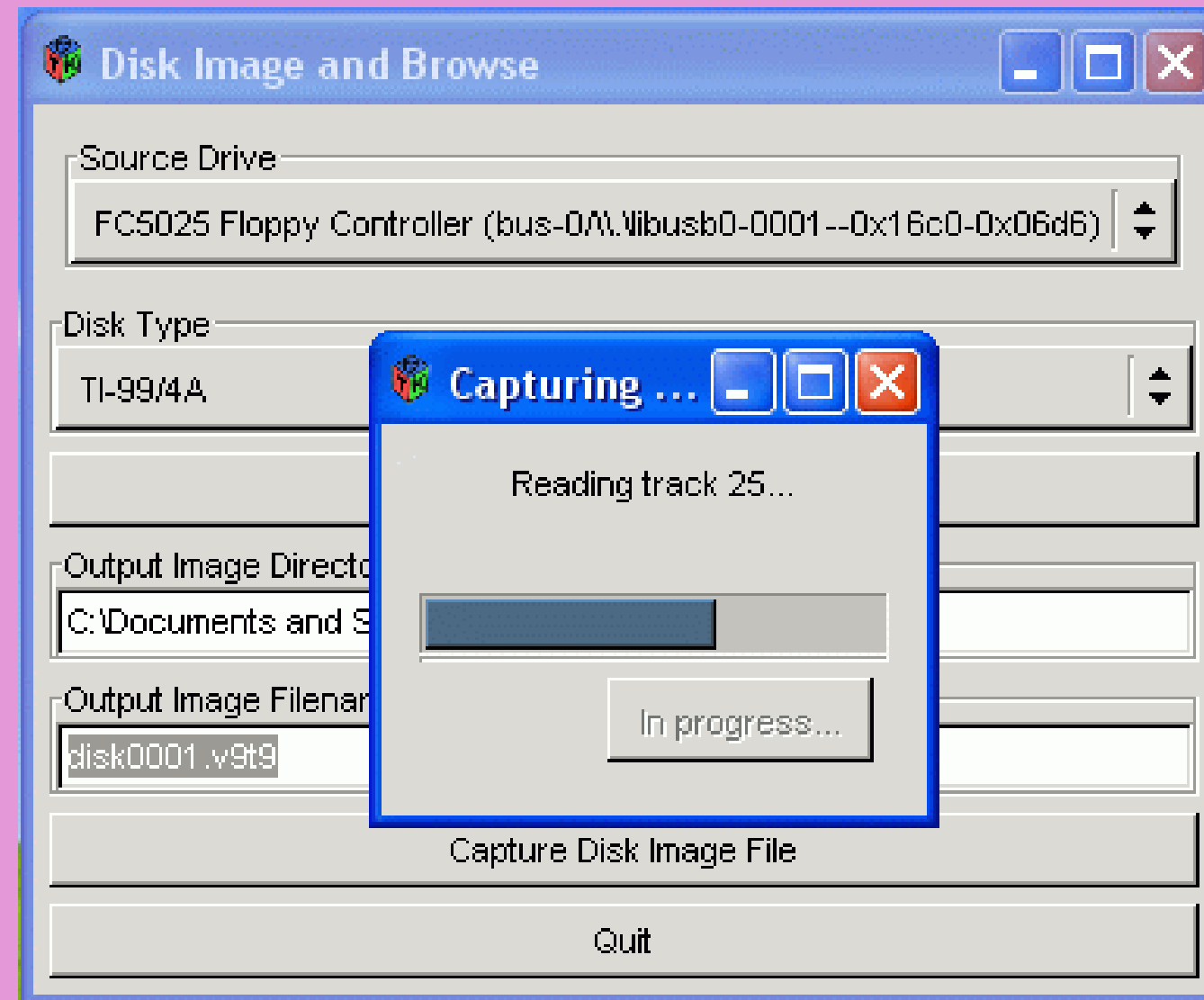
3.5-inch Floppy
Disks

Limitations of FRED

Floppy Controller





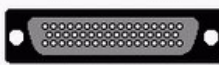
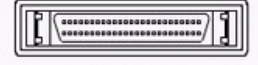
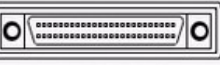

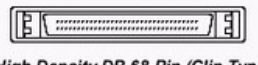
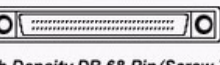

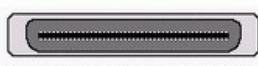


FC 5025

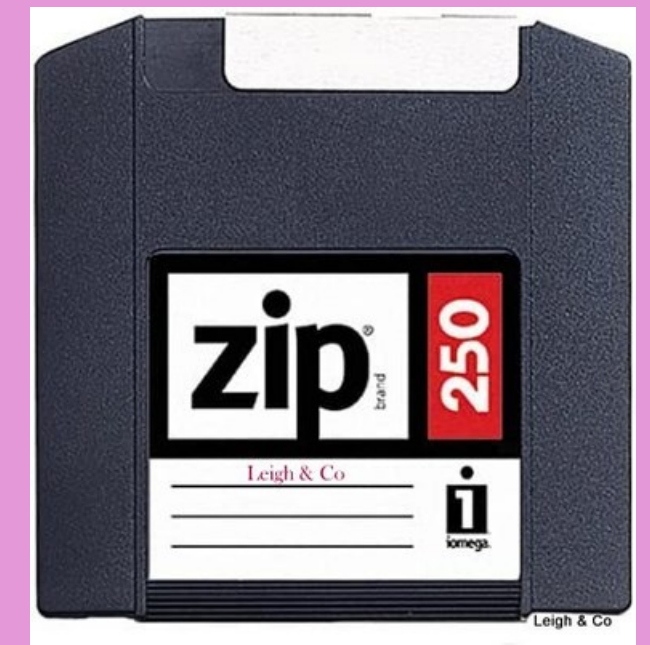


Limitations of FRED

FRED's Configuration

External SCSI Connectors

1	 Centronics 50-Pin	2	 DB 25-Pin	3	 DB 50-Pin
4	 High Density DB 50-Pin (Clip Type)	5	 High Density DB 50-Pin (Screw Type)	6	 VHDCI 68-Pin
7	 High Density DB 68-Pin (Clip Type)	8	 High Density DB 68-Pin (Screw Type)	9	 High Density Centronics 50-Pin
10	 High Density Centronics 60-Pin	11	 High Density Centronics 68-Pin	12	 HDI30 (Apple/Mac)



Our Solution

GreaseWeazle



TOM II



***Is FRED
necessary?***

It is a powerful computer

It is not great for floppy
disks or older media

Support seems to be great



Any Questions?

Email: lkt39@cam.ac.uk

Twitter/X: [@makethecatwise](https://twitter.com/makethecatwise)