



University of  
Sheffield

# Google Workspace vs. Digital Preservation

*Does it have to be this hard? Preserving content from  
Microsoft 365 and Google Workspace*

Bryony Hooper

14/11/2023

# Overview



- Context setting
- Challenge 1: Preserving Google
- Challenge 2: Speed of change
- Challenge 3: Google Data Cap
- Opportunities

# Context



# Context: The University of Sheffield



## University Vision:

*“We will deliver life-enhancing research, innovation and education that not only transforms the lives of our graduates, but shapes the world we live in. We believe the best way to achieve this is by fostering an ambitious, inclusive, collaborative community”*

# Context: Google Workspace



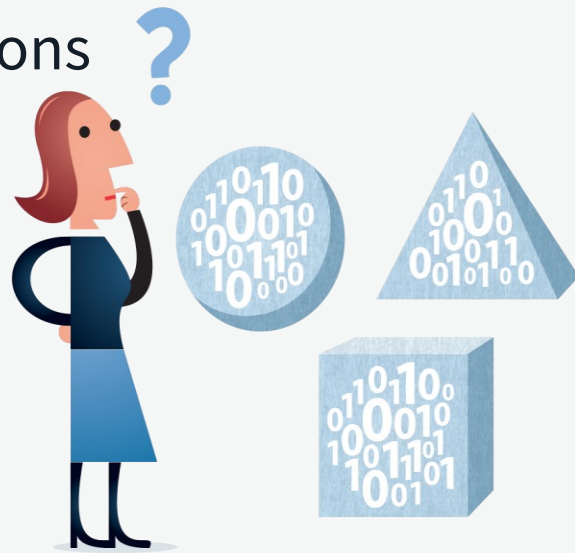
# Challenge 1: Preserving Google



# Challenge 1: Preserving Google (data)

Google Workspace is a web application

- Data exists only with the cloud applications
  - No “*file format*”
  - No checksums
- Migration
- Metadata
- Authenticity
- Ownership of files/folders



# Challenge 2: Speed of change



## Challenge 2



### Google Jamboard is winding down

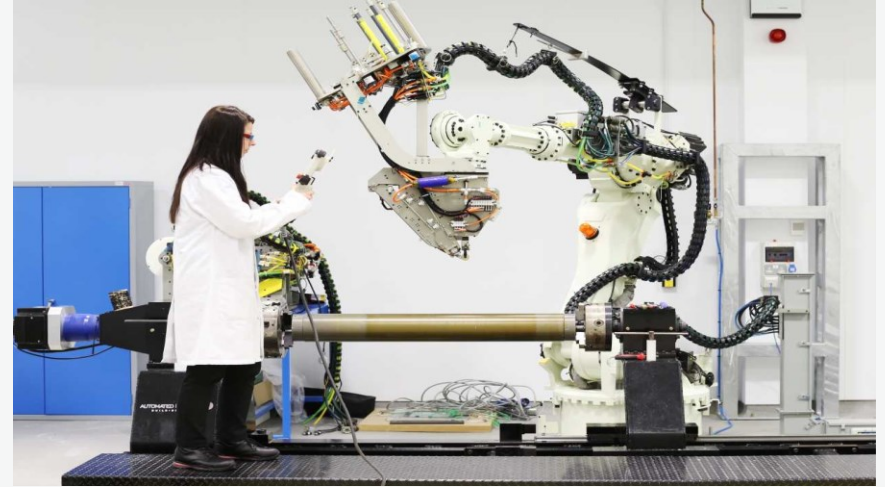
Google Jamboard will no longer be available after **December 31, 2024** across Web, iOS, Android, and Google Meet devices. You can still use Jamboard until that date to export or migrate to one of our whiteboard partners, like Mural, Lucidspark, and Miro, until that date.

# Challenge 3: Google Data Cap

# Opportunities!



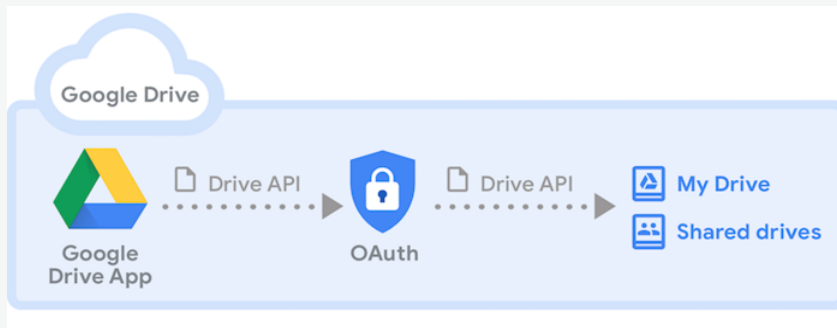
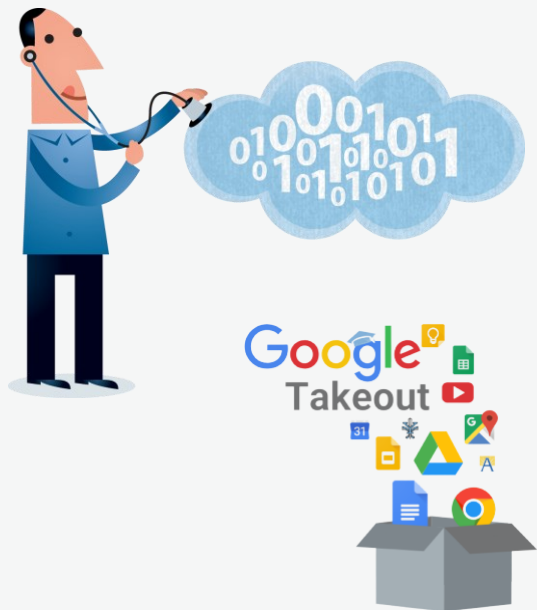
# Opportunity 1: To collaborate



## Digital Preservation Strategy (Delivery Plan 2023-2027):

- *Collaborate with key stakeholders and engage with expertise held within the University to support digital preservation activities*

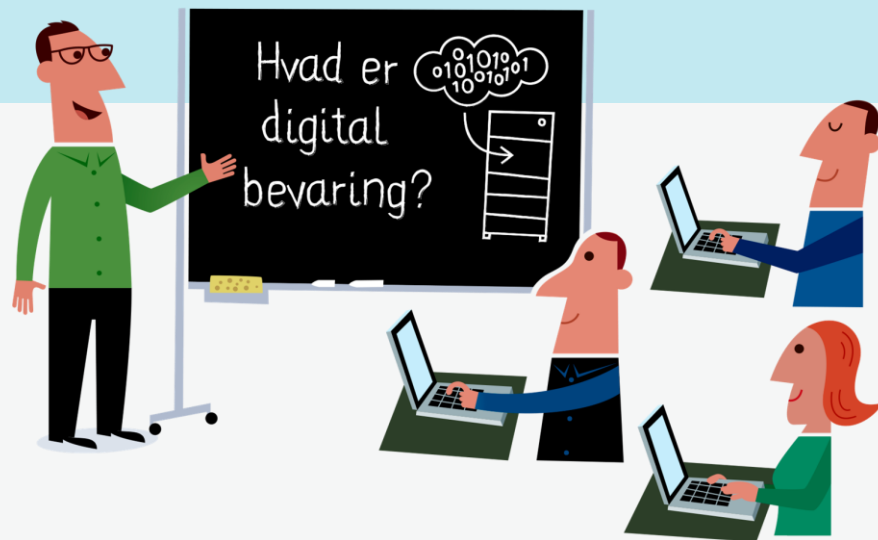
# Opportunity 2: Test migration options



dp-research-googletransferPOC

Public

# Opportunity 3: To Learn



## Selected Reading List:

Jenny Mitchem: [How can we preserve Google Documents?](#) 2017

Paul Young's DPC Blog: [What's Up, \(with Google\) Docs? – The Challenge of Native Cloud Formats](#) 2019



# Thank you!

[b.hooper@sheffield.ac.uk](mailto:b.hooper@sheffield.ac.uk)