



Digital Forever

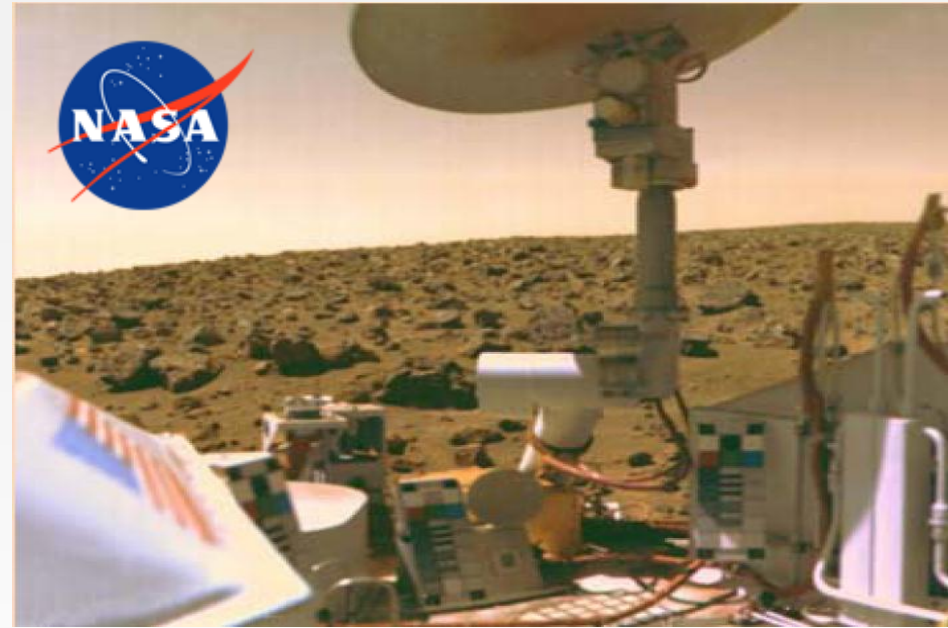
ExLibris **Rosetta**

Rosetta

Requirements gathering - experiences

Robert Bley, Managing Director, Ex Libris UK

The original requirement / the story of Rosetta



- Jan 2007 – Contract date
- Mar 2008 – Specification review
- Oct 2008 – Beta launch of Rosetta V1.0
- Feb 2009 – Switch to production with Rosetta V1.0
- Mar 2010 – Upgrade to Rosetta V2.0

Digitally-born collections

Ensure the library stays relevant in the digital era National Library of New Zealand Web Site Harvest



National Digital Heritage Archive

NDHA

NATIONAL DIGITAL HERITAGE ARCHIVE

G'day (anonymous guest)

Log in

My Prefs

Note: Login is for admin only.

Welcome

Your trail:

View

Attach (5)

Info

Quick Navigation

go

More...

Home

About NDHA

Programme Partners
Background Information
Media Resources

Deposit Material

Digital Preservation

Digital Library Tools
Presentations
Reading Resources

Contacts

WikiHelp

JSPWiki v2.8.0-beta-21

About this webspace

This webspace is hosted by the **NDHA Business Unit** as a convenient source of information about the **National Digital Heritage Archive** and digital preservation at the **National Library of New Zealand**. We regularly add new content here so bookmark this webspace.

News and updates

Format Library Information for DP Community

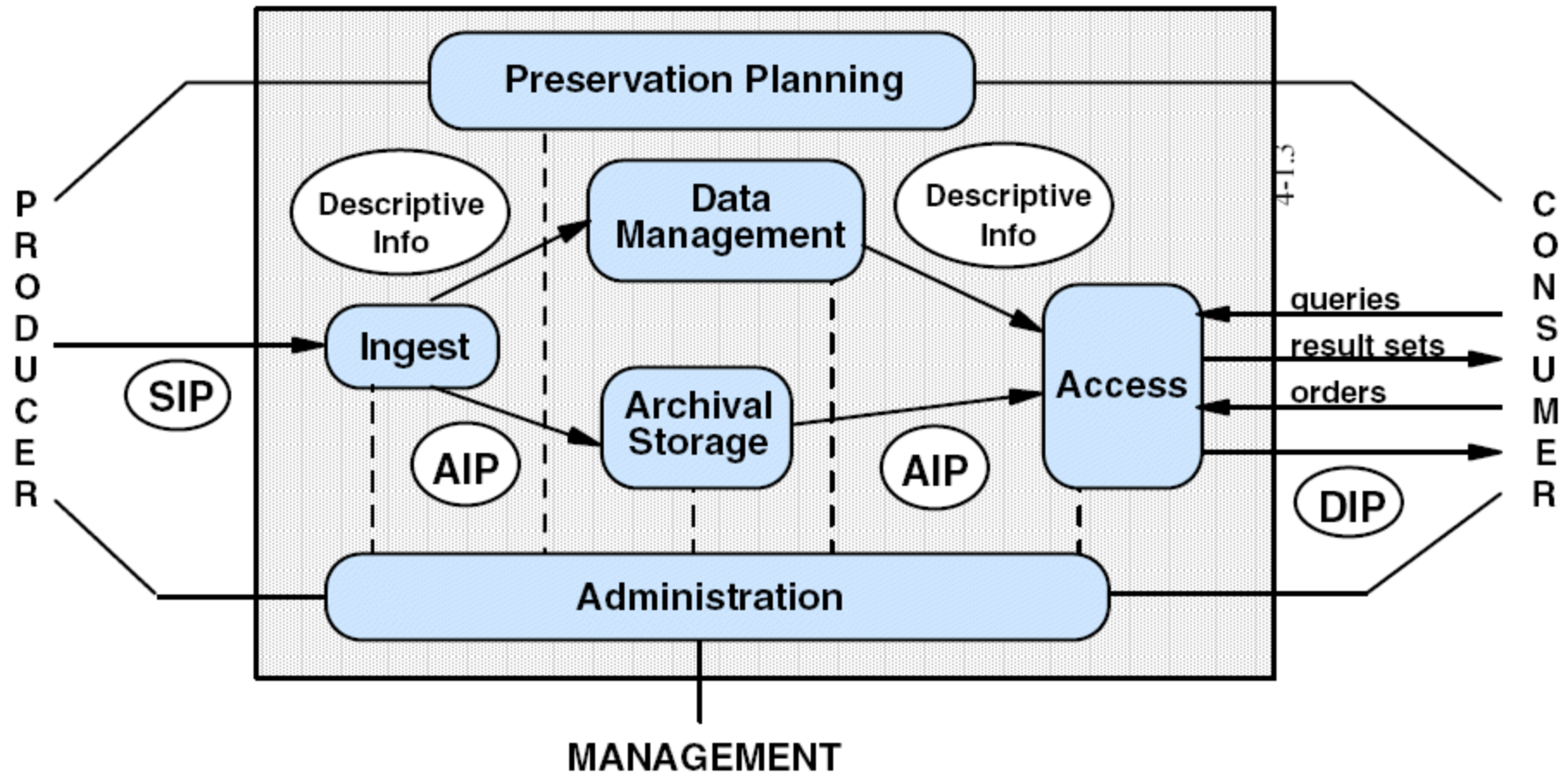
We believe that the information contained in this workbook may be of interest to other members of the digital preservation community. This **Format Library information** includes:

- what technical metadata extractors we use and what formats we use them for,
- the technical fields we extract for each format and how we normalise them, and
- the associations we have made between formats and applications.

NATIONAL DIGITAL HERITAGE ARCHIVE SECURING THE FUTURE

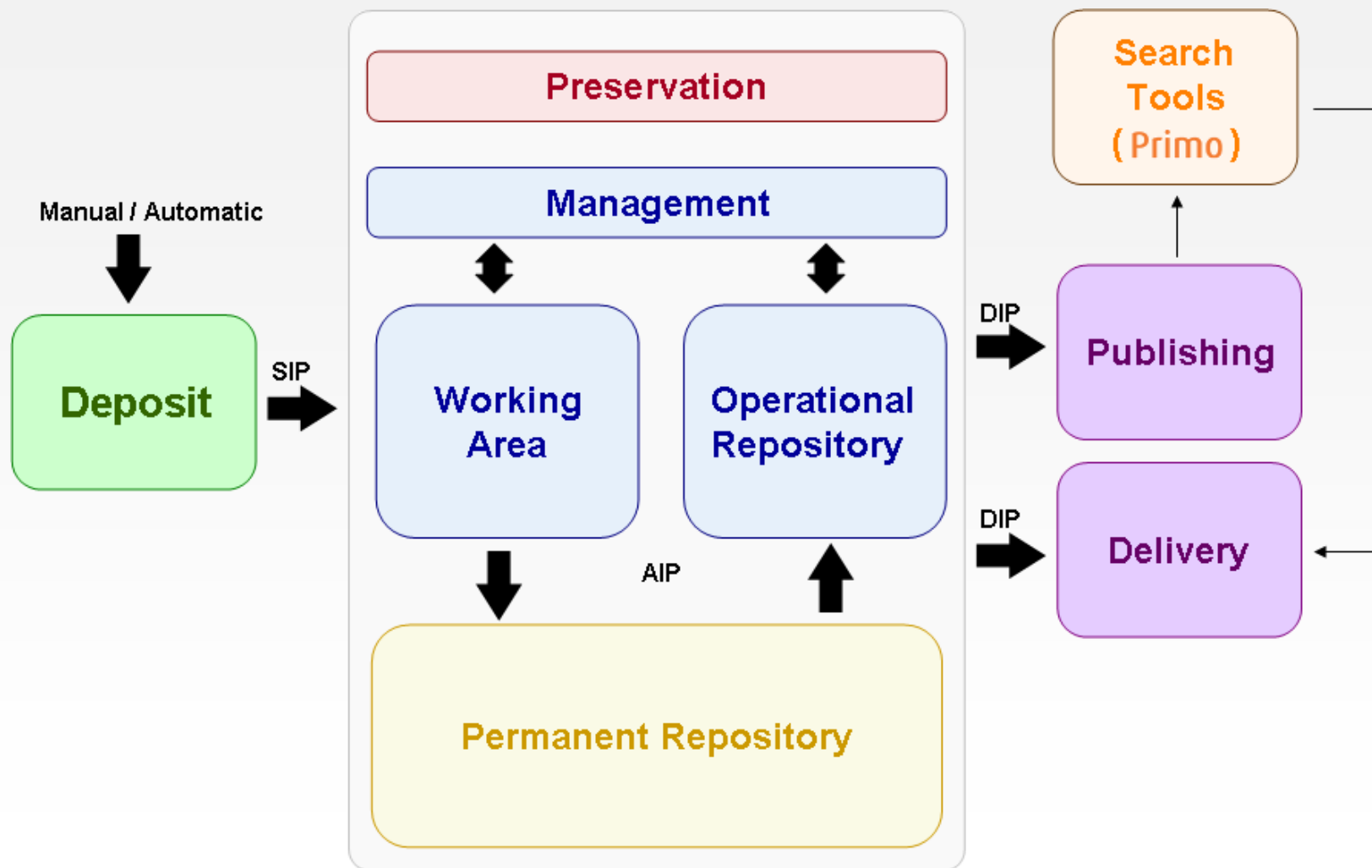
Collection
Preservation
Access

OAIS Model

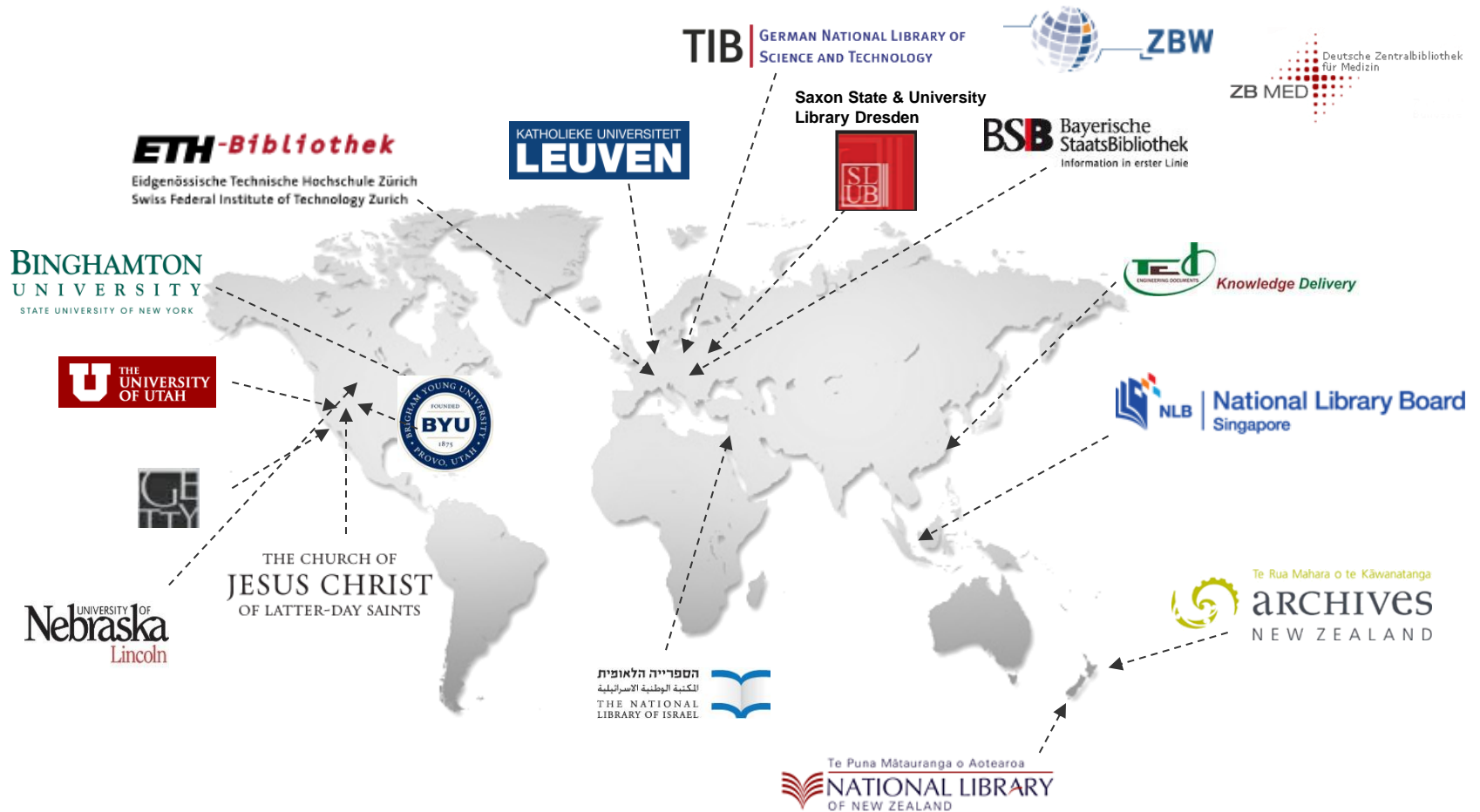


OAIS Functional Entities

OAIS compliant system – Rosetta



Rosetta customers around the world

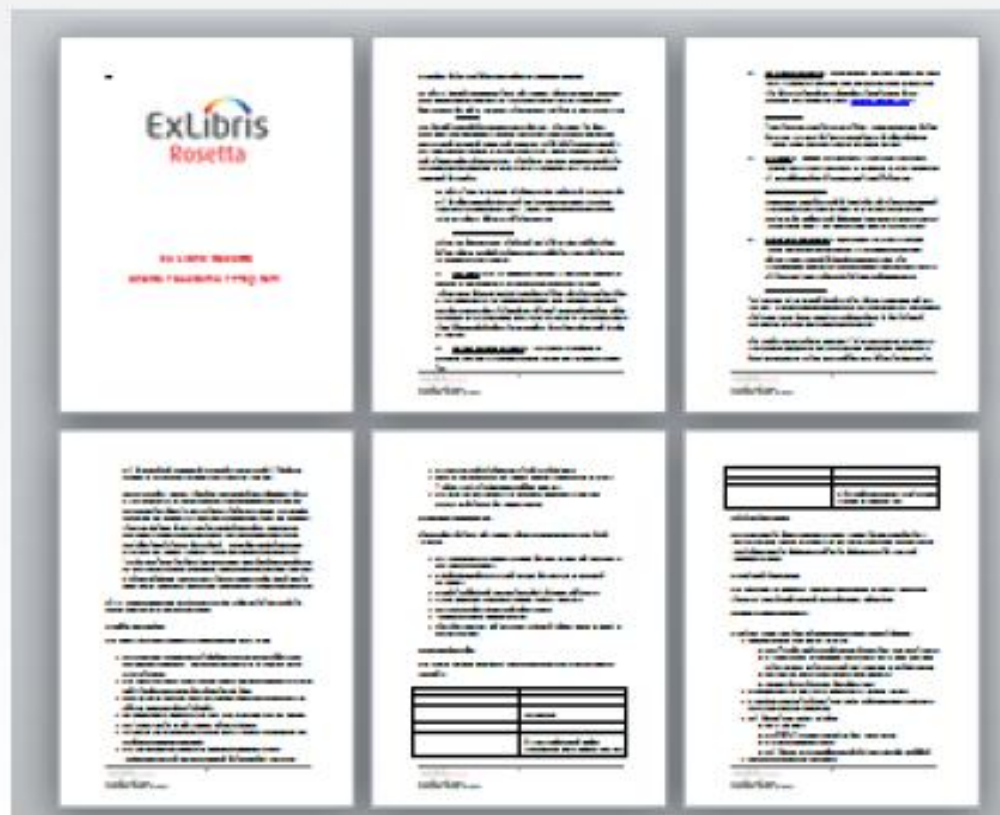


Rosetta Solutions – Community Knowledge Base

- Library of formats with metadata and extraction tools
- Based on PRONOM global library
- Formats associated to applications and risks
- Supports integration with a global library
- Auto update format library with each SW version
- Format Library Working Group (FLWG)



Collaboration - Rosetta Advisory Group



Key to this evolving domain

Directly involved

- PrestoPRIME
- SCAPE
- PREMIS
- JHOVE2
- PASIG
- NISO



Indirectly involved


- Planets
- Blue Ribbon Task Force
- GDFR ► UDFR
- Caspar
- SHAMAN
- APARSEN
- METS
- Europeana
- TRAC



Blue Ribbon Task Force
on Sustainable Digital Preservation and Access



User Group / voting



NERS - ExLibris Product Enhancement Request Voting System

your session has expired

LOGIN

Username:

Password:

submit

Copyright 2010, [International Group of Ex Libris Users](#) & [Ex Libris Users of North America](#)

Dealing with incoming requests

- Customers create the requirement, preferably using use cases
- The requirements are organized based on areas in the product (ingest, processing etc.) and combined when applicable (two similar requirements can be one...)
- An Ex Libris Business Analyst creates a High Level Design (HLD) document
- In some cases the HLD is shared with customers for another validation
- If the requirement is complex, we will use methodological design and analysis
- If the requirement is simple – we just write a statement about what needs to be changed/added and that's all.

Requirement added to JIRA system...

[#DPS-568] Add CAPTCHA to self registration - Ex Libris Jira

<http://il-iapps04:8181/browse/DPS-568>



Rosetta DPS-568

Add CAPTCHA to self registration

Details

Type: Improvement

Priority: High

Affects Version/s: 2.0

Component/s: [Deposit](#)

Labels: None

Rosetta Customer: 64NLNZ

Customer Referen... CR-54

Status: Closed

[\(View Workflow\)](#)

Resolution: Fixed

Fix Version/s: [2.2](#)

Release Notes Co... In order to enhance the security of Rosetta and prevent automatic creation of users, CAPTCHA was added to the self registration form.

Description

We've agreed to provide an option to use a CAPTCHA to self registration.

Attachments

CAPTCHA.doc

117 kB

19/Dec/10 5:15 PM

CAPTCHA support - Functional Specification Design.doc

292 kB

30/Jan/11 12:09 PM



[rosetta_captcha.png](#)

19 kB 20/Feb/11 5:42 PM



[rosetta_captcha2.png](#)

18 kB 14/Feb/11 10:23 AM

JIRA tracks meetings / decisions by Product Manager and the developers...

#DPS-568] Add CAPTCHA to self registration - Ex Libris Jira

http://il-iapps04:8181/browse/DPS-568

Sub-Tasks

1.	DD-Add Captcha	  Closed	Aliza Tubul	2.2
2.	Integrate captha to self registration	  Closed	Tomer Yatskan	2.2
3.	Deposit self registration Captha enhancement	  Closed	Tomer Yatskan	2.2
4.	Deposit self registration Captha UI design	  Closed	Yair Brama	2.2
5.	Documentation Update Task (Producers Guide)	  Resolved	Tamara Friedman	

Activity

All **Comments** Work Log History Version Control Activity Transitions Summary Remote Attachments Subversion

Tomer Yatskan added a comment - 09/Dec/10 2:08 PM
need design

Nir Sherwinter added a comment - 09/Dec/10 2:12 PM
Hi Yair,

Please write a small design which includes screen shot and error messages and attach it to the Jira task. When finished assign it back to Tomer.

Thanks!

Yair Brama added a comment - 19/Dec/10 5:14 PM
Attached is a document that is a basis for the spec. The spec will be added.

Josh Weisman added a comment - 14/Feb/11 10:23 AM - **edited**
Results of today's meeting-

1. According to Carmit's recommendation to keep it accessible, we will implement reCaptcha
2. Should be customized to look like her mockup (see attached), but not in a pop-up. Use [customization instructions](#).
3. Will add a general parameter (true/false) to control whether CAPTCHA is displayed. Default true
4. Deposit module needs access to Internet (Google servers) for CAPTCHA to work. This should not be a limitation since the use case here is self-registration, which is used from the public Internet

Josh Weisman added a comment - 20/Feb/11 5:41 PM
From Carmit:

HTML

```
<div id="recaptcha_widget">
```

Functional specification design document

Functional Specification Design



DEVELOPMENT DOCUMENTATION

Rosetta

CAPTCHA support in Deposit Registration

Functional Specification Design (HLD)

ExLibris Preservation
Deposit Registration - High Level Design
Last Update: December 20, 2010
Author: Yair Berman

Functional Specification Design

CONFIDENTIAL INFORMATION

The information herein is the property of Ex Libris Ltd. or its affiliates and any misuse or abuse will result in economic loss. DO NOT COPY UNLESS YOU HAVE BEEN GIVEN SPECIFIC WRITTEN AUTHORIZATION FROM EX LIBRIS LTD.

This document is provided for limited and restricted purposes in accordance with a binding contract with Ex Libris Ltd. or an affiliate. The information herein includes trade secrets and is confidential.

DISCLAIMER

The information in this document will be subject to periodic change and updating. Please confirm that you have the most current documentation. There are no warranties of any kind, express or implied, provided in this documentation, other than those expressly agreed upon in the applicable Ex Libris contract.

Any references in this document to non-Ex Libris Web sites are provided for convenience only and do not in any manner serve as an endorsement of those Web sites. The materials at those Web sites are not part of the materials for this Ex Libris product and Ex Libris has no liability for materials on those Web sites.

Copyright Ex Libris Limited, 2010. All rights reserved.

Documentation produced August 2007.

Document version [6.0]

Web address: <http://www.exlibrisgroup.com>

© Ex Libris Ltd., 2010

Page 1 of 16



Functional specification design document

Document release notes

Date	Editor	Approved by	Description	Section name
20/12/10	Jair Brama		Draft	

Table of Contents

1.	Introduction	5
1.1	Purpose	5
1.2	Motivation	5
1.3	Requirements	5
2.	Assumptions, Restrictions and Dependencies	6
2.1	Assumptions	6
2.2	Restrictions	6
2.3	Dependencies	6
3.	Solution Description	7
3.1	CAPTCHA fields	7
3.2	Error Handling	9
3.3	Entities and ERD	10
3.4	UI	11
3.5	Detailed Process Flows	11
4.	Product Upgrade impact	12
5.	Risks	13
5.1	External risks	13
6.	Interfaces	14
6.1	Interoperability - Internal dependencies	14
6.2	External interfaces	14
6.3	Public APIs	14

Functional specification design document

Functional Specification Design

The following actions should be supported:

- New - In case the user is not able to recognize the characters, the system will generate a new image with different characters.
- Help - In case the user pressed the "Help" action, a new screen/tab will open with the following text:



"How do I enter the characters in the picture?"

We ask you to enter the letters and numbers in a picture when we need to make sure that a person, not an automated program, is trying to register as a Producer. The characters are drawn so that it's possible for a person to recognize them, but very difficult for a program to. This helps us prevent automated programs from creating large numbers of accounts and abusing the system.


To enter the characters

Look at the characters and enter what you see in the box. To see a different set of characters, click New.

For example:

Picture type	Tip
	Enter both lines of characters, beginning with the top line, no spaces. The solution is C3K8SXHECXSF
	Enter the characters, ignoring the tear. The solution is CFS36FYC

Functional Specification Design

Picture type	Tip
	Enter characters for both curved lines, no spaces. The solution is 3YW32F6PFS6CDCHT

Notes

The letters aren't case-sensitive, so you can type them as either uppercase or lowercase.

Don't type spaces between the characters, even if you're entering characters for more than one picture.

If you type the characters incorrectly, click New to see a new set of characters."

3.2 Error Handling

In case the user failed to enter the right characters, the following error message should appear, on top the CAPTCHA image:

The characters didn't match the picture. Please try again.

The other error messages should appear as they appear today (on the left top of the screen).

Testing, feedback, testing, release....



Thank You!