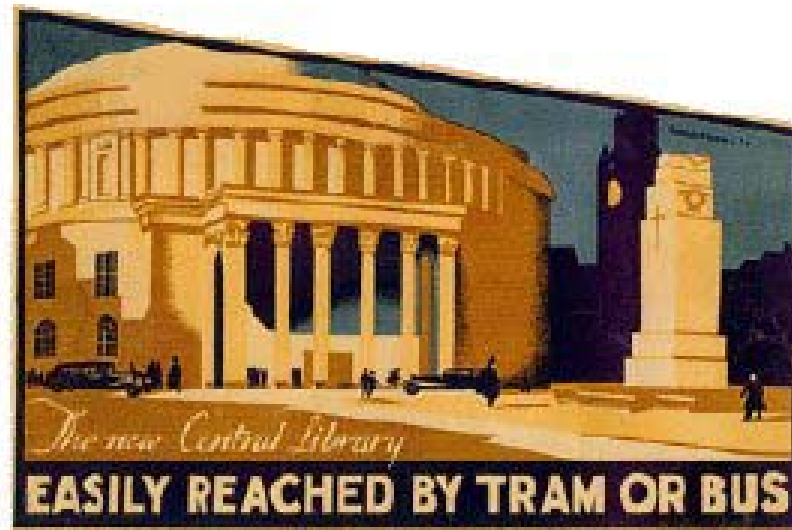


# Web Archiving in Greater Manchester

Kevin Bolton, Principal Archivist  
Manchester Archives and Local Studies

[k.bolton@manchester.gov.uk](mailto:k.bolton@manchester.gov.uk)

0161 234 1959/1980



**MANCHESTER**  
CITY COUNCIL

# Background



- 10 district archives services
- Greater Manchester County Record Office
- Greater Manchester Archivists Group (GMAG)
- 2007 – a small group of us started looking at digital preservation
- Solutions for archiving web sites



**MANCHESTER**  
CITY COUNCIL

# Which Web Sites?

- Consultation with district archive services
- Local government web sites
- Small community web sites
- Diocese web site
- Events (e.g. congestion charge)

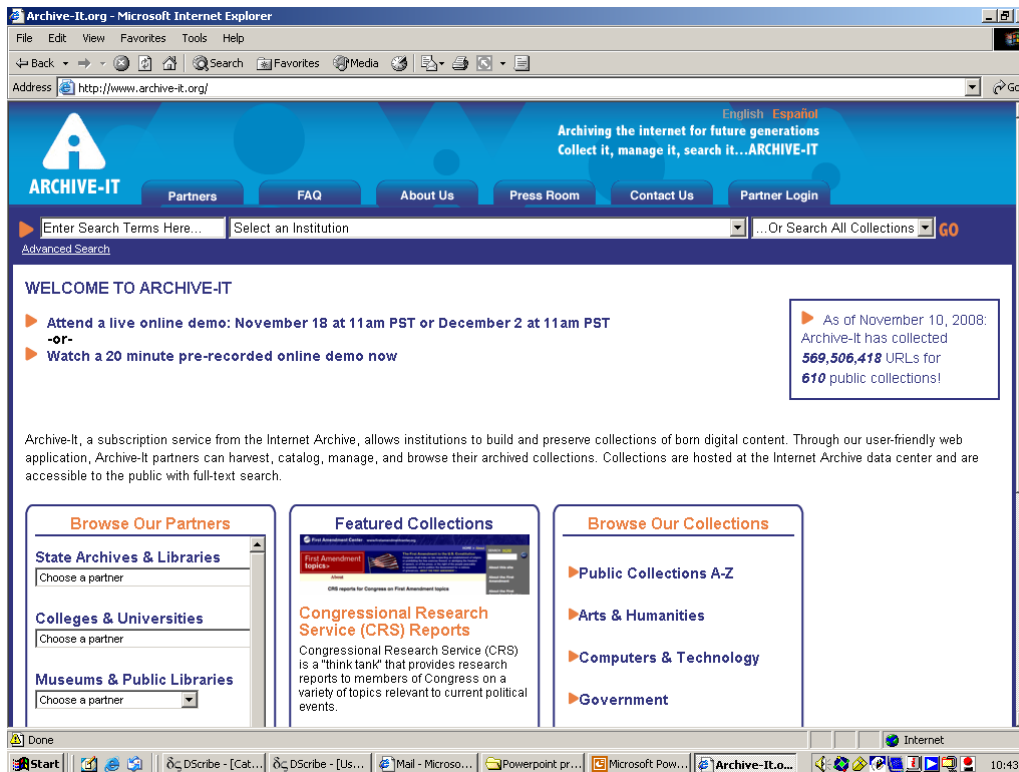


# Requirements

- Everything!
- Crawling
- Quality Control
- Storage
- Access
- User friendly



# Archive It - <http://www.archive-it.org/>

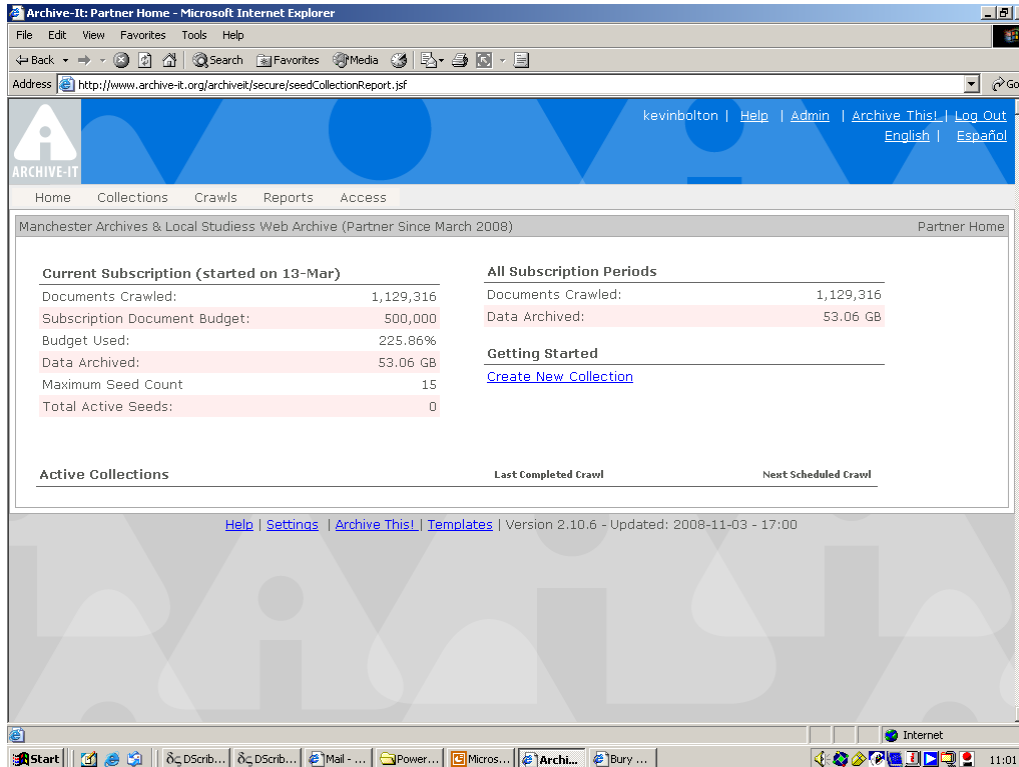


- Subscription service
- Provided by the Internet Archive
- Allows institutions to build and preserve of web content
- Used by several North American States archives
- March 2008 – archived Manchester Local Government web sites



**MANCHESTER**  
CITY COUNCIL

# Archive It - <http://www.archive-it.org/>



- Harvest (Heratrix). Basic subscription – 10,000,000 urls / 300 seeds
- Catalogue
- Manage – frequency of crawls
- Access (Wayback Machine)
- Free text index



**MANCHESTER**  
CITY COUNCIL

Archive-It: Seed Management - Microsoft Internet Explorer

File Edit View Favorites Tools Help

Back Forward Stop Home Search Favorites Media Print

Address <http://www.archive-it.org/archiveit/secure/seedCollectionHome.jsf> Go

ARCHIVE-IT

Home Collections Crawls Reports Access

kevinbolton | [Help](#) | [Admin](#) | [Archive This!](#) | [Log Out](#)  
[English](#) | [Español](#)

## Greater Manchester Archivists Group

## Seed Management

[All] Seeds

Show Seed URLs by seed state: [All](#) , [Active](#) , [Inactive](#) by crawl frequency: [Test](#) , [Daily](#) , [Weekly](#) , [Monthly](#) , [Quarterly](#) , [Semiannual](#) , [Annual](#) , [One-Time](#)

[Back to Collection Management](#) [Bulk Edit Seeds](#) [Add Seeds](#)

	URL↑	Metadata	Frequency	Updated
<a href="#">[edit]</a> <a href="#">Deactivate</a>	<a href="http://www.agma.gov.uk/">http://www.agma.gov.uk/</a>		Weekly	April 15, 2008 4:03:33 AM by kevinbolton
<a href="#">[edit]</a> <a href="#">Deactivate</a>	<a href="http://www.bolton.gov.uk/">http://www.bolton.gov.uk/</a>		Weekly	April 15, 2008 4:03:33 AM by kevinbolton
<a href="#">[edit]</a> <a href="#">Deactivate</a>	<a href="http://www.bury.gov.uk/">http://www.bury.gov.uk/</a>		Test	April 15, 2008 4:03:33 AM by kevinbolton
<a href="#">[edit]</a> <a href="#">Deactivate</a>	<a href="http://www.gmpa.gov.uk/">http://www.gmpa.gov.uk/</a>		Weekly	April 15, 2008 4:03:33 AM by kevinbolton
<a href="#">[edit]</a> <a href="#">Deactivate</a>	<a href="http://www.gmppte.gov.uk/">http://www.gmppte.gov.uk/</a>		Weekly	April 14, 2008 9:39:14 PM by kevinbolton
<a href="#">[edit]</a> <a href="#">Deactivate</a>	<a href="http://www.gmwda.gov.uk/">http://www.gmwda.gov.uk/</a>		Weekly	April 15, 2008 4:03:33 AM by kevinbolton
<a href="#">[edit]</a> <a href="#">Deactivate</a>	<a href="http://www.manchester.anglican.org/">http://www.manchester.anglican.org/</a>		Weekly	April 15, 2008

Start | | DSCribes - [Cat... | DSCribes - [Us... | Mail - Microso... | Powerpoint pr... | Microsoft Pow... | Archive-It: ... | | 10:49

URL:  [\[Browse\]](#) [\[Wayback\]](#)

Verification OK

Show on public site ☒Crawl Frequency ☐ Test ☐ Daily ☒ Weekly ☐ Monthly ☐ Quarterly ☐ Semiannual ☐ Annual ☐ One-TimeHelp on the 'Test' Option 

## Metadata

You can add collection level metadata below using the Dublin Core Element Set. Only the description field below required, and this information will appear on [www.archive-it.org](http://www.archive-it.org). You can edit this information at any time after you create your collection. For more information about Dublin Core, please visit their [website](#).

Archive-It collection level metadata is accessible by [OAI-PMH metadata harvesters](#). [Learn more about adding metadata in Archive-It.](#)

Title Creator 

Subject Enter a subject below and click the 'Add' button. You can delete a subject by clicking the 'remove' link below the added subject. Archive-It can remember subjects entered previously and will try to automatically complete what you type. Make sure you save your changes before moving on.

Enter a subject  [\[Remove\]](#)Description





## Reports

All Collections  Started On Or After

Action	Collection	Frequency	Status?	Started	Completed	Docs Crawled
<a href="#">View Report</a>	<a href="#">Greater Manchester Archivists Group</a>	Weekly	Finished	Apr 14, 2008	Apr 14, 2008	959
<a href="#">View Report</a>	<a href="#">Greater Manchester Archivists Group</a>	Weekly	Finished (TL)	Apr 3, 2008	Apr 6, 2008	226,211
<a href="#">View Report</a>	<a href="#">Greater Manchester Archivists Group</a>	Weekly	Finished (TL)	Mar 27, 2008	Mar 30, 2008	235,150
<a href="#">View Report</a>	<a href="#">Greater Manchester Archivists Group</a>	Test	Finished	Mar 18, 2008	Mar 20, 2008	155,474
<a href="#">View Report</a>	<a href="#">Greater Manchester Archivists Group</a>	Test	Stopped By User	Mar 17, 2008	Mar 18, 2008	6,321
<a href="#">View Report</a>	<a href="#">Greater Manchester Archivists Group</a>	Test	Finished	Mar 17, 2008	Mar 18, 2008	7,742
<a href="#">View Report</a>	<a href="#">Greater Manchester Archivists Group</a>	Test	Stopped By User	Mar 17, 2008	Mar 17, 2008	688
<a href="#">View Report</a>	<a href="#">Greater Manchester Archivists Group</a>	Test	Finished	Mar 16, 2008	Mar 17, 2008	4,719
<a href="#">View Report</a>	<a href="#">Greater Manchester Archivists Group</a>	Weekly	Finished (TL)	Mar 13, 2008	Mar 16, 2008	666,996



## Greater Manchester Archivists Group Web Archive (Manchester Archives & Local Studies)

Enter Web Address: All [Compare Archive Pages](#)Searched for <http://www.bury.gov.uk/>

1 F


[Look up URL](#) in general Internet Archive web collection[Proxy Mode](#)

\* denotes when page was updated

### Search Results for Jan 1, 2005 - Dec 31, 2008

2005	2006	2007	2008
0 pages	0 pages	0 pages	1 page
			<a href="#">Mar 13, 2008</a> *

You are viewing an archived Web site, archived on 17:40:18 Mar 13, 2008, that is part of a collection of archived websites created using [Archive-It](#). Information on this web page may be out of date. External links, forms, and search boxes may not function within this collection. [[hide](#)]

 Bury MBC Logo



People at the heart of  
Bury

[Feedback](#) [Help](#) [Accessibility](#)

Search

Search Bury MBC

Sea

[Sitemap](#) [A-Z Services](#)

[Business](#)

[Community](#)

[Learning](#)

[Environment](#)

[Health & Care](#)

[Social Issues](#)

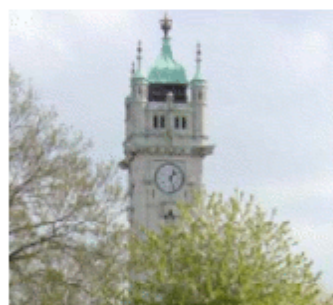
[Housing](#)

[Jobs](#)

[Legal](#)

[Leisure](#)

[Transport & Streets](#)



### What can I do online?

- [Apply for jobs with Bury MBC](#)
- [Read or download 'Our Voice' - Bury's community magazine](#)
- ['Have your say' - consultations](#)
- [Renew library books online](#)
- [Search library catalogue](#)
- [Search for Bury community contacts](#)
- [Use our e-planning services](#)
- [View council agendas, minutes and meetings](#)
- [View FOI information](#)
- [Make payments online](#)
- [Online council tax](#)
- [Online business rates](#)
- [Online housing and council tax benefit](#)
- [Make a comment, complaint or suggestion](#)
- [Report a problem with our service](#)
- [Feedback on our website](#)
- [Appeal form for transfer to secondary school](#)
- [... Online forms](#)

Bury MBC, Town Hall,  
Knowsley Street, Bury  
Lancashire BL9 0SW

**0161 253 5000**

Emergencies / Out of Office H  
0161 253 6606

- [Contact Us](#)
- [Emergency Services](#)
- [Policing & Public Safety](#)

How are we doing?

Document library

Local Travel News



### Your Council

Find out more about your Council, our  
ambitions for Bury and Council Priorities



### Events

Search our online database of events taking  
place throughout the Borough.



### Bury Life

Links to information and services for people  
that live in Bury



### Vulnerable People

Information and services for carers and  
vulnerable people

### In and around Bury

#### Town guides and maps

[Ramsbottom](#)  
[Tottington](#)  
[Bury](#)  
[Radcliffe](#)  
[Whitefield](#)  
[Prestwich](#)

#### Local Area Partnerships

[Ramsbottom, Tott  
& North Manor](#)  
[Bury West](#)

# Positives – Archive It

- User friendly
- Flexible
- All in one solution – storage, capture, access
- Good support – from the Internet Archive and community.



**MANCHESTER**  
CITY COUNCIL

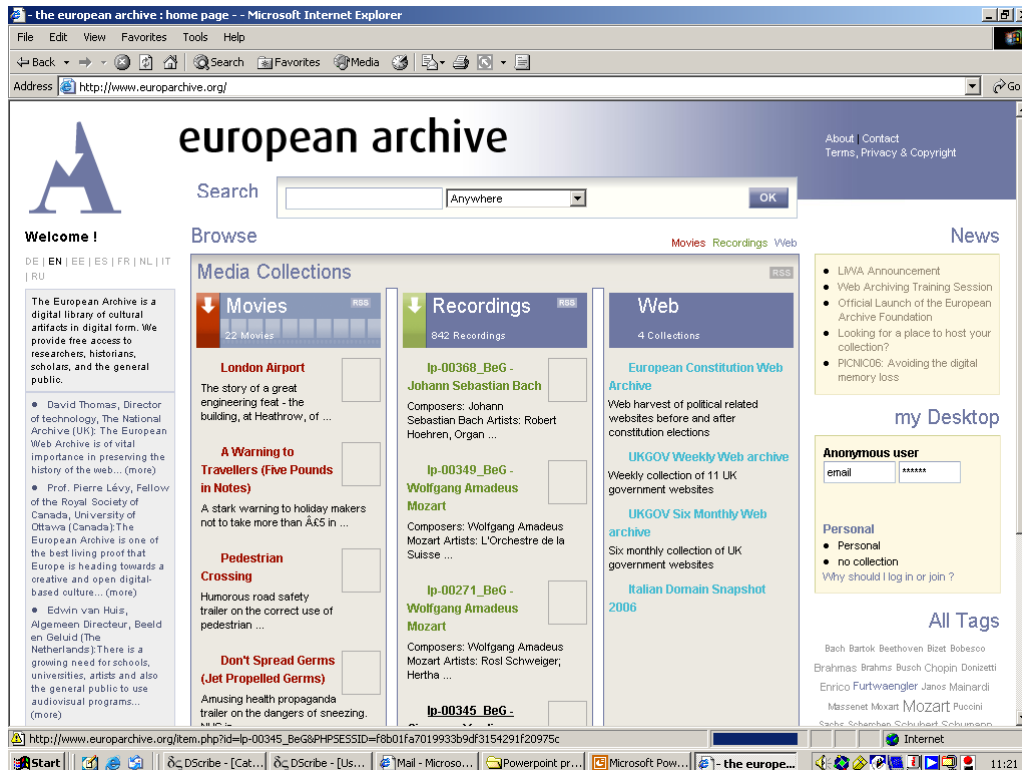
# Cost!

- Basic subscription \$10,000 per annum
- £500-750 per district
- Archive every local government web site on a monthly basis
- Need everyone to be in



**MANCHESTER**  
CITY COUNCIL

# European Web Archive - <http://www.europarchive.org>



Offer a web archiving service:

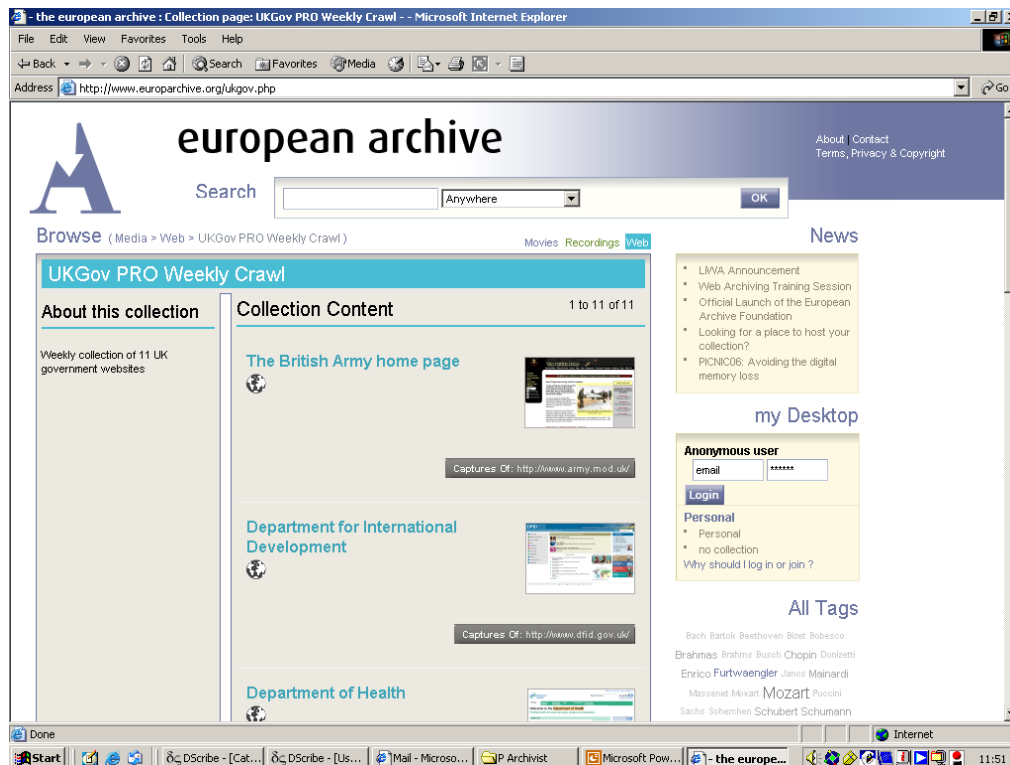
- Effective crawls
- Quality insurance
- Patching
- Reporting
- Hosting
- Access

Cost: c.150 Euros per site



**MANCHESTER**  
CITY COUNCIL

# European Web Archive



- Cost: c.150 Euros per site
- May offer better value for money for GMAG
- Used by TNA
- 2009: Quarterly crawls?



**MANCHESTER**  
CITY COUNCIL

# Other options?

- Hanzo Archives

<http://www.hanzoarchives.com/>

- Web Curator Tool [Open Source]

<http://webcurator.sourceforge.net/>



**MANCHESTER**  
CITY COUNCIL

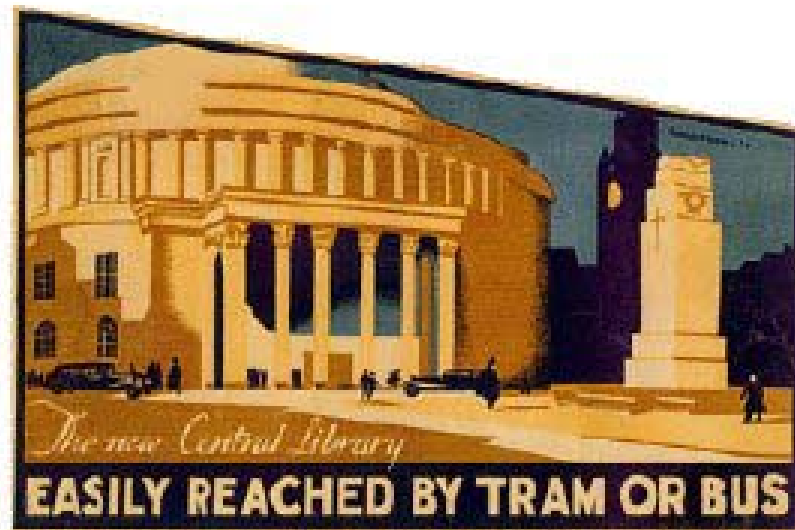


# Web Archiving in Greater Manchester

Kevin Bolton, Principal Archivist  
Manchester Archives and Local Studies

[k.bolton@manchester.gov.uk](mailto:k.bolton@manchester.gov.uk)

0161 234 1959/1980



**MANCHESTER**  
CITY COUNCIL