

The Archaeology Data Service (ADS) and the OASIS Project



Catherine Hardman
Deputy Director (Collections)
catherine.hardman@york.ac.uk

ADS Mission Statement: What we do

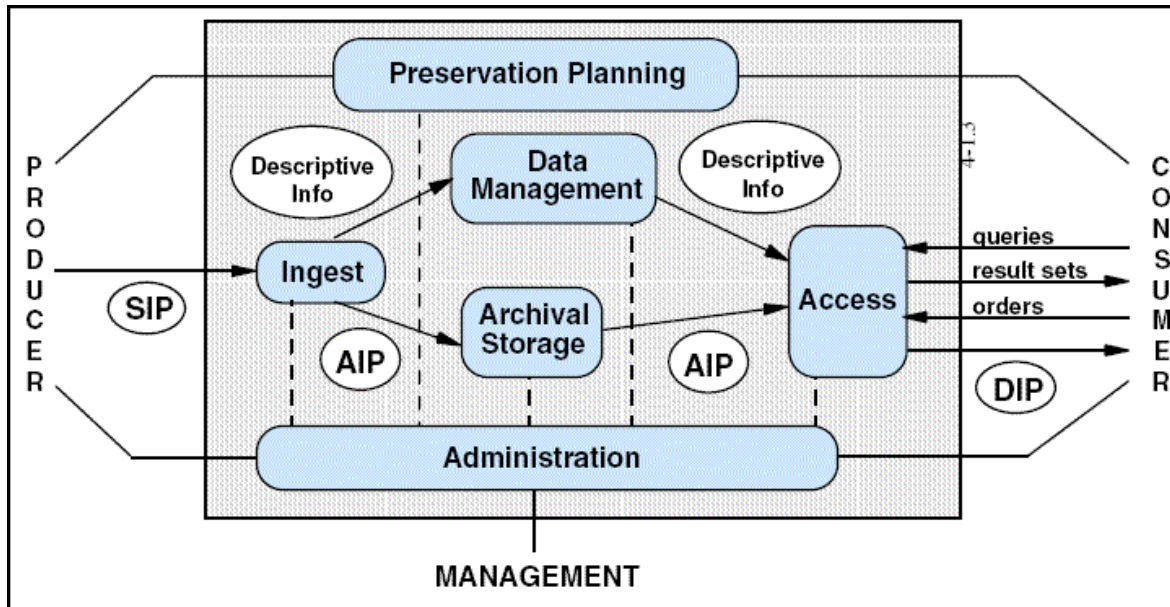
Our remit:

“To support research, learning and teaching with high quality and dependable digital resources.”

In practice this means three key things:

- That ADS collect and preserve datasets
- That we allow full, easy and free access to these
- And that we additionally provide guidance and support to data creators

Archival Standards: How we do it



We follow the Open Archival Information System (OAIS) reference model

In March 2011 we were very pleased to obtain the Data Seal of Approval:

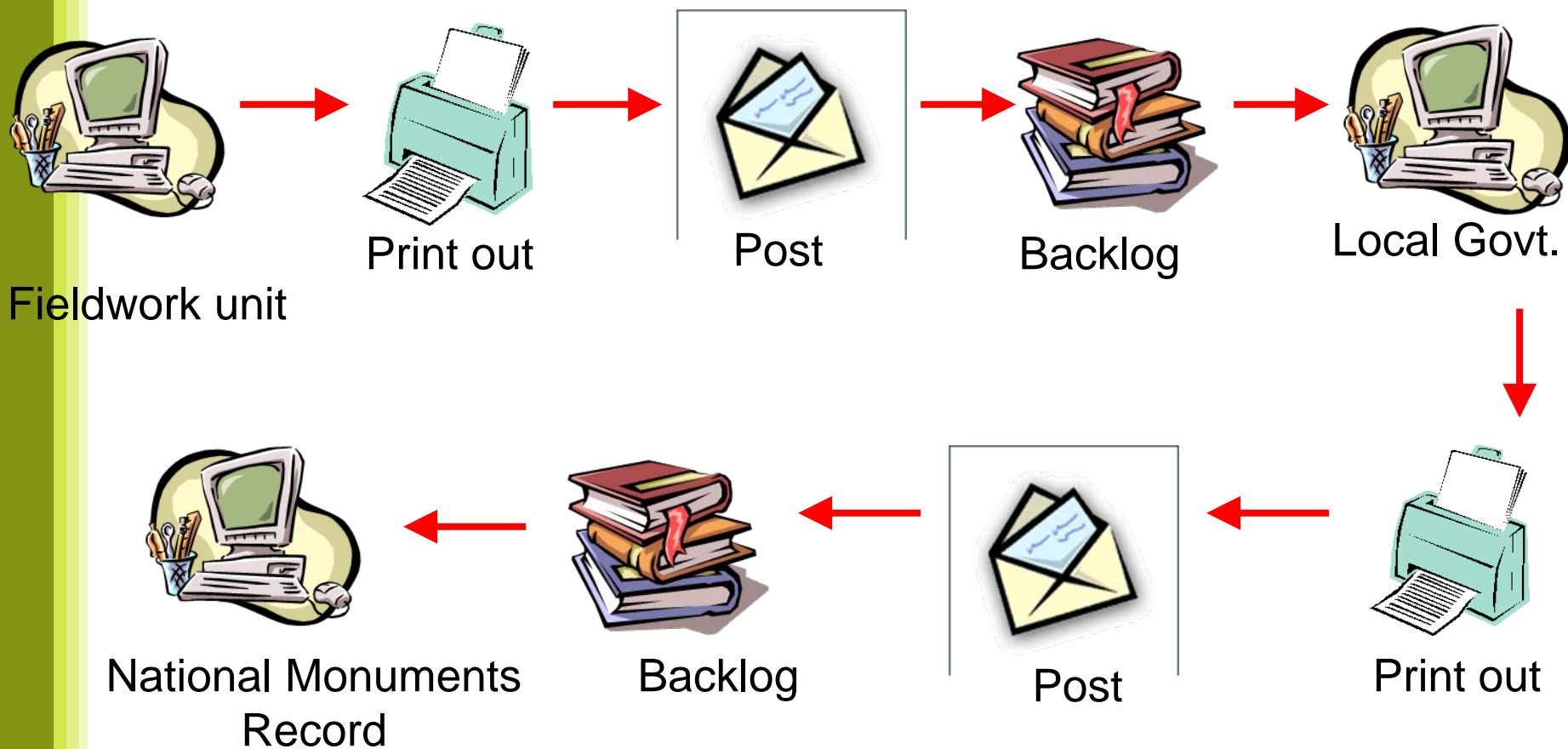
http://assessment.datasealofapproval.org/assessment_36/seal/html/



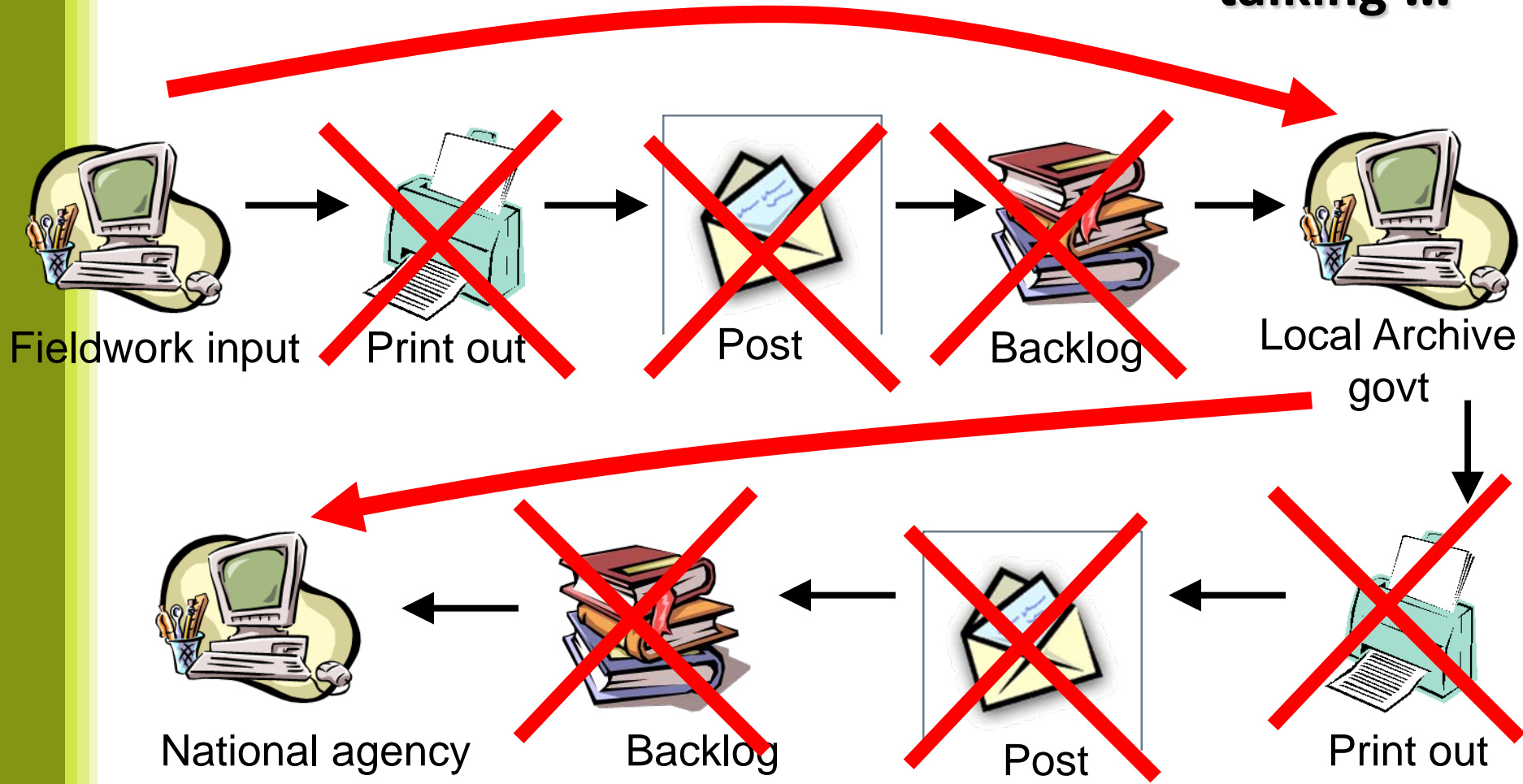
Grey Lit: Current situation

- 10,000 – 40,000 reports
- Research Gap
- Public excluded
- Backlogs of data
- Quality assurance?

Grey Lit: Current situation



In an ideal world the machines should do the talking ...



OASIS: Online Access to the Index of archaeological investigationS

<http://oasis.ac.uk>

OASIS DATA COLLECTION FORM

List of Projects

Main

This is the main page of the OASIS form, the form is split into sections as listed below.

You can fill as much or as little of each section in at any one time. Once you have filled in a section completely, please tick the **completed** box at the bottom of that section. The form will then check to see that all the mandatory fields (marked with a *) have been completed. If this is the case it will return to this page, if not it will ask you complete the missing fields.

There are some fields that **must** be filled in: the project name, the location and your name and email address.

Please note: the form entries are only saved when the **Save record** has been pressed. If you leave the form inactive for over 30 minutes any entries will be lost, this is to retain the security of your username and password.

| | |
|--|---|
| OASIS ID: catherin1-13982 | |
| ? Project details | Add or edit entries |
| Status | Incomplete |
| ? Project location | Add or edit entries |
| Status | Incomplete |
| ? Project creators | Add or edit entries |
| Status | Incomplete |
| ? Project archives | Add or edit entries |
| Status | Incomplete |
| ? Project bibliography 1 | Choose a Publication type Add or edit entries + |
| Status | Incomplete |

Please enter your name and personal email address here so that any queries about this form can be directed to you:

| | |
|----------------------|----------------------|
| Name | Email address |
| <input type="text"/> | <input type="text"/> |

[Save record](#) [Clear all](#)

- On-line form
- Used by all fieldworkers
- Records event level data
- Data accessible by HERs & NMRs
- Upload of 'Grey Literature'
- Record acts as metadata for report

Unpublished Fieldwork Reports (Grey Literature Library)

Introduction

Browse by contractor

Search reports



Primary contact

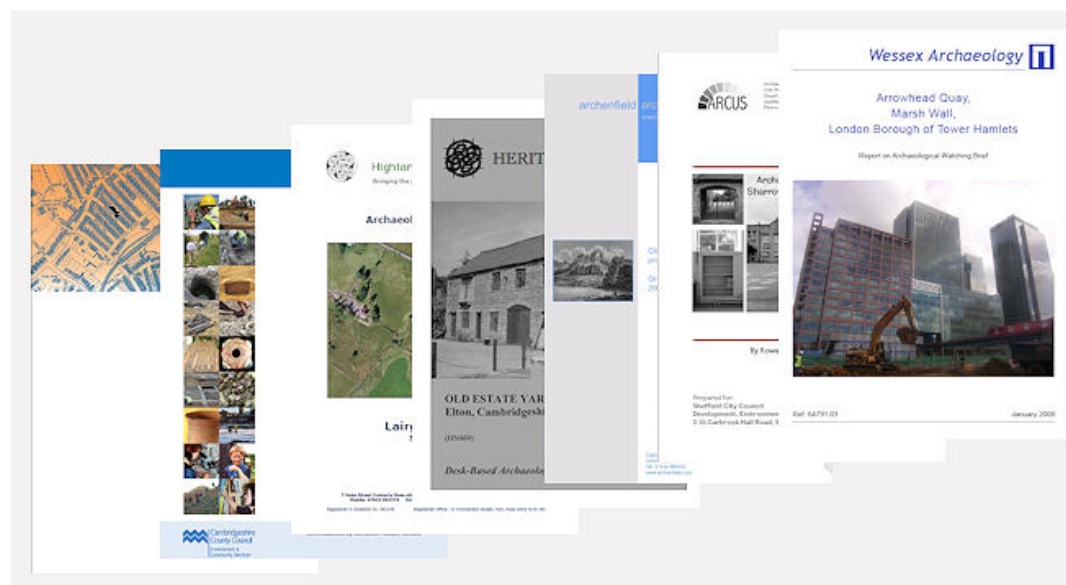
Archaeology Data Service
King's Manor
Exhibition Square
York
YO1 7EP
England
Tel: 01904 323954
Fax: 01904 323939

[Send e-mail enquiry](#)

Introduction

The aim of this resource is to make available unpublished fieldwork reports in an easily retrievable fashion. There are **currently 8936 reports available** and this number is increasing steadily through the OASIS project in England and Scotland.

Through this resource it is possible to list the reports by contractor, using the [browse by contractor](#) option and also to do a more advanced search filtering these reports by period, monument/artefact type and location using the [search](#) option. These unpublished reports cover archaeological interventions such as: watching briefs, excavation reports and building surveys. Desk-based assessments and specialist analysis are also included.



We have recently topped the 10,000 report mark!

Unpublished Fieldwork Reports (Grey Literature Library)

Introduction

Browse by contractor

Search reports



Primary contact

Archaeology Data Service
King's Manor
Exhibition Square
York
YO1 7EP
England
Tel: 01904 323954
Fax: 01904 323939

[Send e-mail enquiry](#)

Search Page

Enter your search terms, select the type of search and click on the search button. It is possible to build up quite specific queries but we would recommend that you start simple. You can add more boxes by using the [+](#) button. For more tips on searching see the text at the bottom of the page.

Book details

Enter title, author, producer, place of production or **publication** date and select the relevant box

☒ Title ☐ Author ☐ Producer ☐ Place of production ☐ Date



Where

'Where' categories are Site name, Parish, District, County and Country - select the relevant box

☒ Site name ☐ Parish/Non parish area ☐ District/Unitary Authority ☐ County ☐ Country



What

Please select an artefact or monument and enter **one** term (use the plus button to add another)

☒ Monument ☐ Find



When

Select a period from the list of MIDAS period terms

Period

Select from list below



Identifier

OASIS id or ADS Record ID

Id number

We reuse the OASIS metadata on which to perform the searches.

Unpublished Fieldwork Reports (Grey Literature Library)

Introduction

Browse by contractor

Search reports



Primary contact

Archaeology Data Service
King's Manor
Exhibition Square
York
YO1 7EP
England
Tel: 01904 323954
Fax: 01904 323939

[Send e-mail enquiry](#)

Results

Click on the title to view more details about the document and project or click on the file type link to download the report. Where multiple files exist for a report, you will need to go to the full details page in order to access the files.

Records 1 - 6 of 6

| | |
|--|--|
| [Multiple files available] | Adcock, J Gater, J (2005) 'Geophysical Survey: Arkwright's Mill, Manchester' Geophysical Surveys of Bradford (GSB Prospection) |
| [Multiple files available] | Elks, D. (2005) 'Wigmore Farm' Stratascan Ltd |
| PDF (3MB) | Wright, N. (2007) 'Godmanchester to Hemingford Abbots Water Main Renewal, Cambridgeshire' CAM ARC |
| PDF (1MB) | Phillips, T. (2007) 'Roman Remains at 8 New Street, Godmanchester, Cambridgeshire' CAM ARC |
| PDF (995KB) | Howe, A. (2007) 'Archaeological Monitoring Land Between Park Lane and East Chadley Lane, Godmanchester, Cambridge' CAM ARC |
| PDF (6MB) | Pozorski, Z (2009) '5 Offord Road, Godmanchester, Huntingdon, Cambridgeshire: An archaeological evaluation' Archaeological Solutions Ltd |

ALL | JOURNALS AND SERIES | GREY LITERATURE | PROJECT ARCHIVES | BIBLIOGRAPHIES | THESES

Unpublished Fieldwork Reports (Grey Literature Library)

Introduction
Browse by contractor
Search reports



Primary contact
Archaeology Data Service
King's Manor
Exhibition Square
York
YO1 7EP
England
Tel: 01904 323954
Fax: 01904 323939

Send e-mail enquiry

Details of Document

Bibliographic Reference and files

Phillips, T. (2007) 'Roman Remains at 8 New Street, Godmanchester, Cambridgeshire', report number 935. CAM ARC: Bar Hill, Cambridgeshire

Click on a button to open a file, or right click and use file --> save as from your browser menu to save the file to your computer. Alternatively, if the report is available online, click on the link to open the resource in a new window:

cambridg1-25249_3.pdf PDF 1 Mb

<< display document details >>

Site details

Location
Site name 8 New Street
Parish GODMANCHESTER
District HUNTINGDONSHIRE
County CAMBRIDGESHIRE
Country ENGLAND
Grid reference TL 524 270 (point)

Monuments and Finds

DITCH ROMAN
PIT ROMAN
SETTLEMENT/TOWN ROMAN
BONE ROMAN
COINS ROMAN
COMPOSITE COPPER UNCERTAIN
ALLOY ARTEFACT
POTTERY ROMAN

Other details

Description Spiral bound, 31 pages, 4 figures, 3 plates, 9 tables, 6 appendices.



CAM ARC Report Number 935

Roman Remains at 8 New Street, Godmanchester, Cambridgeshire

An Archaeological Evaluation

Tom Phillips

March 2007

Click through the metadata 'landing page' and find the document.

Challenges (1)

- Need for community buy-in
- Need for continuing support for the system
- Poor quality of some of the reports
- Reports not designed for research but as part of the planning process

Challenges (2)

- Technical issues in the creation of the files means they are sometimes incomplete (images)
- Poor metadata affects the quality of searching (e.g. Highways agency reports)
- Metadata doesn't reflect scale (e.g. Roman Pottery may reveal 6 or 1,000 sherds)

Opportunities (1)

- Access (from April '05 to Jan '11 over 500,000 downloads)
- Key archaeological reports archived
- Inclusions of DOIs
- Enhancing metadata by using Natural Language Processing

Opportunities (2)

- Provides new research opportunities (Bradley and Fulford)
- Lead to investigation of more automated upload of other types of data (Wessex images project)
- On line access may lead to informal peer review and thereby an increase in quality

Thank-you for listening!



Follow us on Twitter:

@ADS_Update



Follow us on Facebook:

<http://www.facebook.com/archaeology.data.service>



E-mail: catherine.hardman@york.ac.uk

Website: <http://archaeologydataservice.ac.uk/>