

# Implementing Preservation Metadata

## The OCLC Digital Archive Experience

**Taylor Surface**

**DPC Meeting on Preservation Metadata  
September 2005**



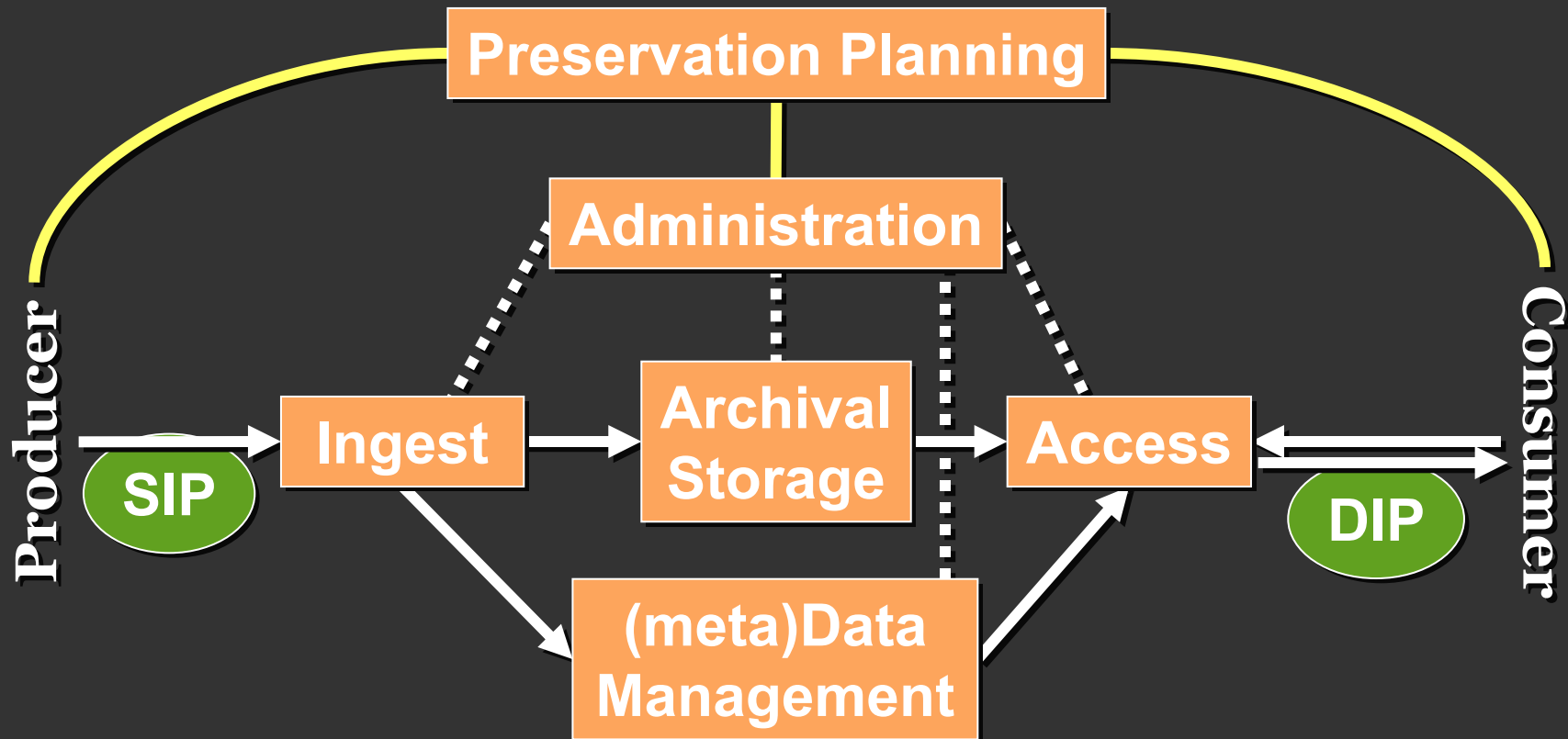
# Agenda

- **Ecosystem**
- **OCLC Digital Archive**
- **Preservation metadata in the Archive**
- **Preservation metadata next steps**

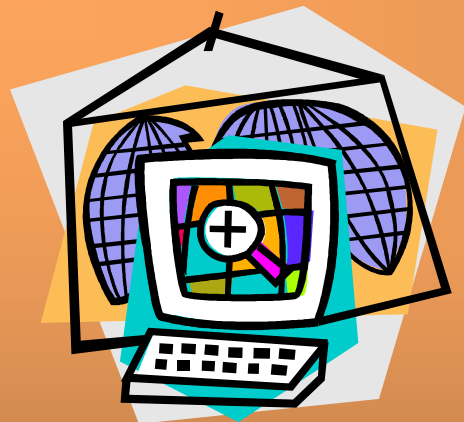
# OCLC Digital Collection Services



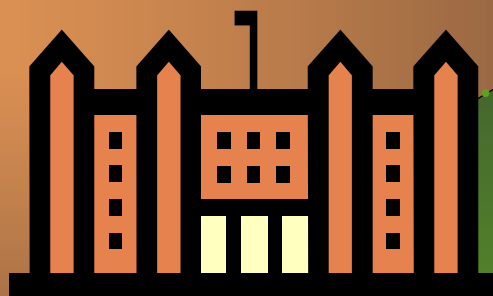
# Ecosystem



# OCLC Digital Archive Services



**Web  
Archiving**



*Digital Archive*

**Digital  
Masters**



# Current Digital Archive users



- US Government Printing Office
- Villanova University
- Lincoln University
- Cranbury Public Library
- Columbia University
- Brittle program

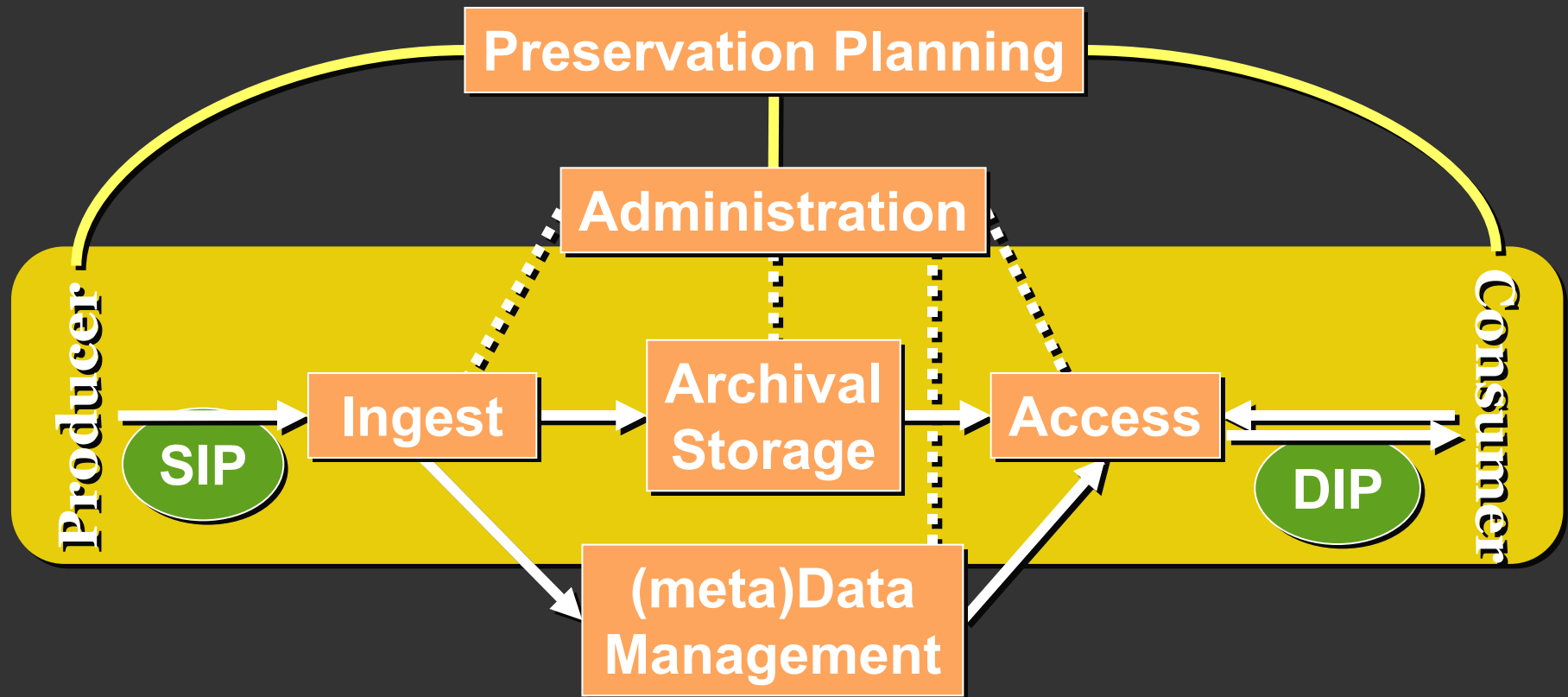
## 9 US state libraries

- Arkansas
- Connecticut
- Ohio
- Michigan
- New Mexico
- Wisconsin
- Missouri
- Montana
- California

# **OCLC Preservation Policy**

- **Depositor terms & conditions**
- **Service levels**
- **Data integrity processes**
- **Service continuity processes**
- **Preservation Strategy**

# Ecosystem - METS





# METS in OCLC

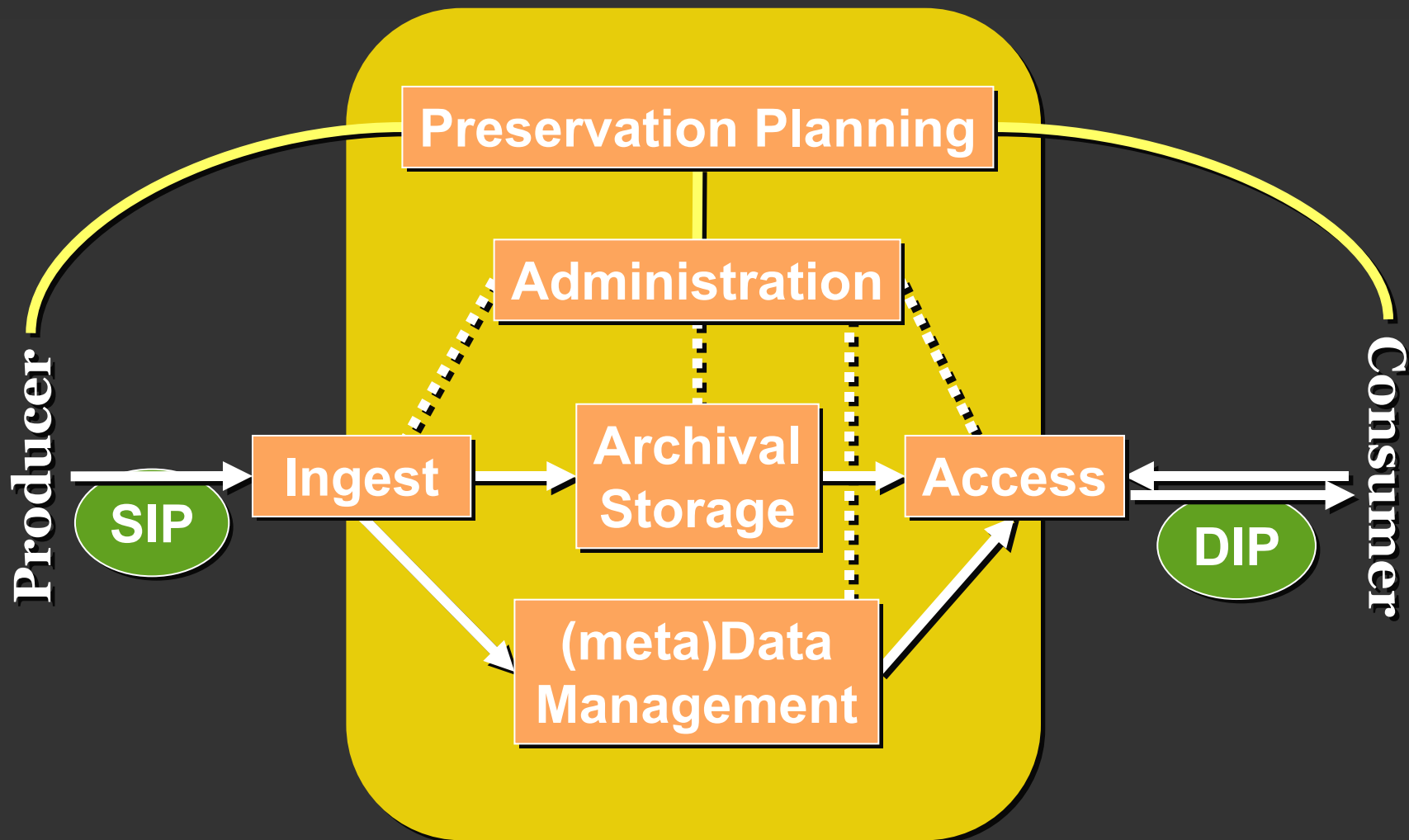
- **Web harvester - interoperability**
- **Batch ingest – SIP Builder**
- **University of Illinois / OCLC Project**
  - Web Archives Workbench (WAW)
  - Domain / Entity / Analysis / Packager
  - Library of Congress, NDIIPP Program Project

# Web Archives Workbench (WAW)

## Tools for curators ...

- **Discovery – identify & manage domains**
- **Properties – associate metadata, content, and providers**
- **Analysis – select content from structure**
- **Packager – package content & metadata**

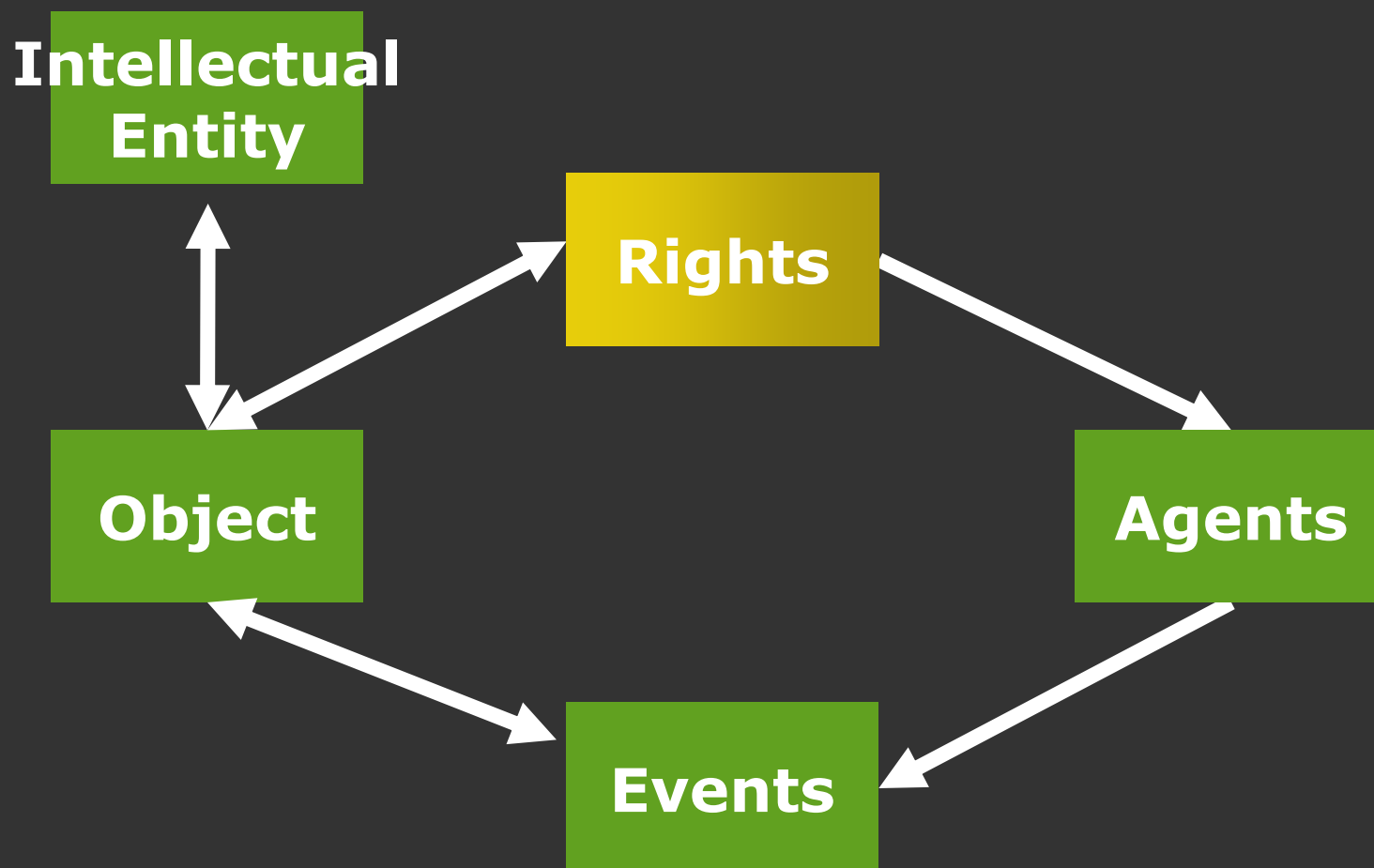
# Ecosystem - PDI



# **PDI in action at OCLC**

- **Supports discovery**
- **Provides information for capturing actions**
- **Incorporates technical metadata**
  - JHOVE-supplied
- **Re-evaluate for “Preservation Actions”**
- **INFORM –data format risk assessment**

# PDI & PREMIS data model



# **PREMIS / PDI next steps**

- **PREMIS in implementation (P.I.G.)**
- **PREMIS in Digital Archive**
- **Preservation planning**
  - PREMIS supporting a preservation action?

# Implementing Preservation Metadata

**General information:**

**[www.OCLC.org/DigitalArchive](http://www.OCLC.org/DigitalArchive)**

**Supporting information @ [www.OCLC.org ...  
/support/documentation/DigitalArchive](http://www.OCLC.org/support/documentation/DigitalArchive)**

**INFORM risk assessment @ [www.DLIB.org  
/dlib/november04/stanescu/11stanescu.html](http://www.DLIB.org/dlib/november04/stanescu/11stanescu.html)**

**Me:**

**[taylor\\_surface@oclc.org](mailto:taylor_surface@oclc.org)**